

NAME: \_\_\_\_\_



# Word Family Dice

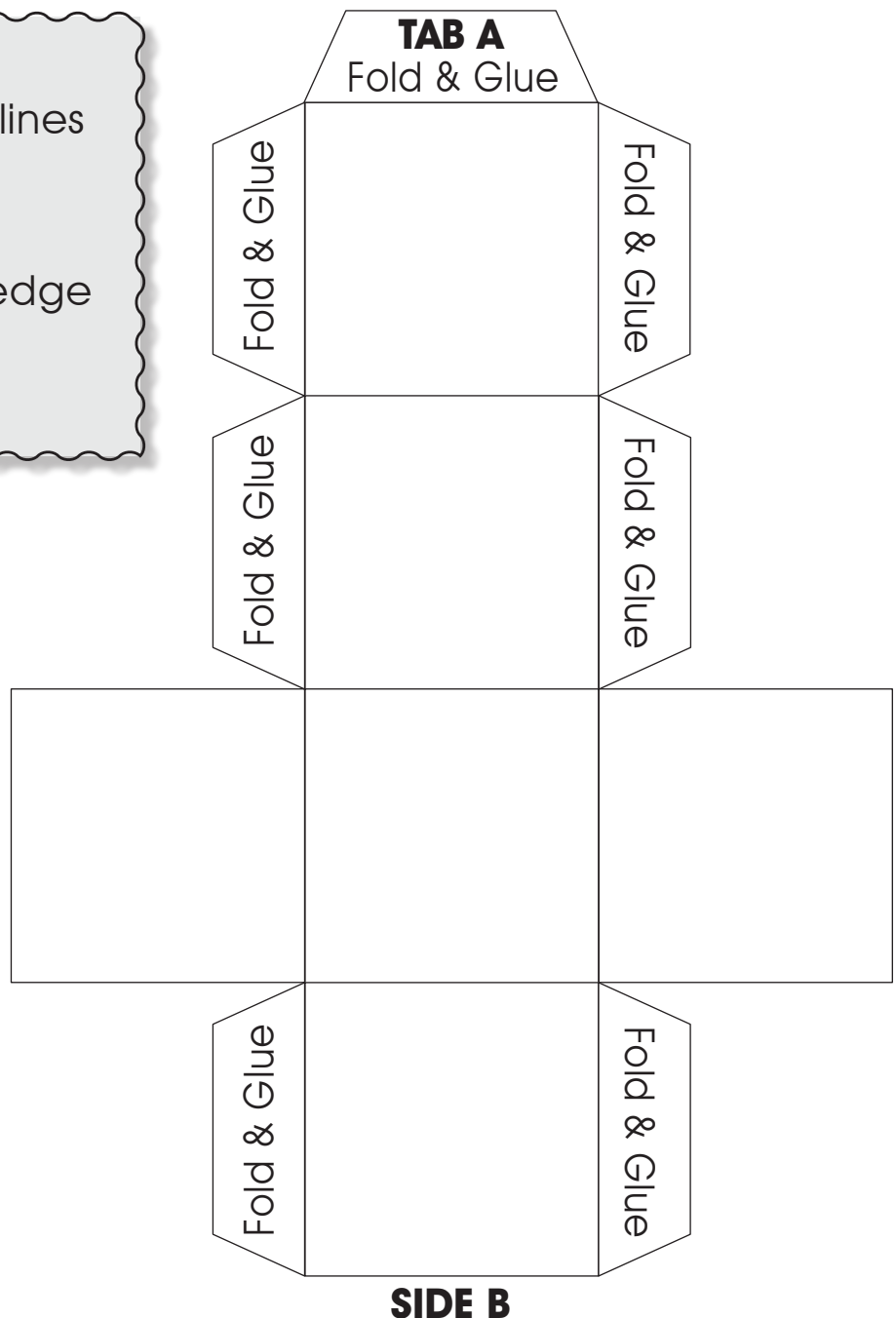
Make two copies of this page. Write beginning sounds on one die. On the other die write the word family or families on each side of the die that you wish the students to practice.

## Assembly Instructions:

1. Cut along all outside lines dotted and solid.
2. Fold along all lines.
3. Glue tab A to inside edge of side B.
4. Fold in side flaps.

## Directions for Play

1. Students roll the Word Family Dice and try to form words.
2. Students get one point for each word made.
3. The first one to make six words wins.





# Alphabetical Order

1. Choose a rime. Make as many real words as you can.


2. Cut the words apart.

3. Put the words in alphabetical order. Glue them in order in the ABC Box.


NAME: \_\_\_\_\_



# Text Word Search

## What sound do you hear?

1. Fill in the chart with long vowel word family words from your book.
2. Say the word.
3. Put it in the column under the sound you hear.
4. Underline the rime.

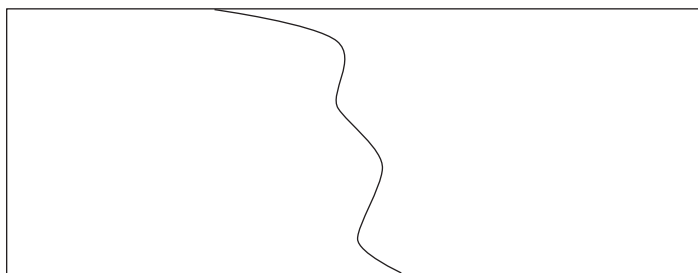
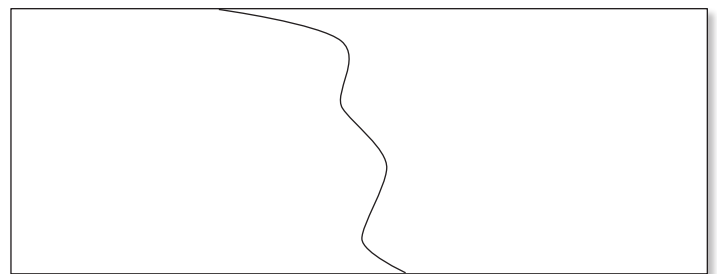
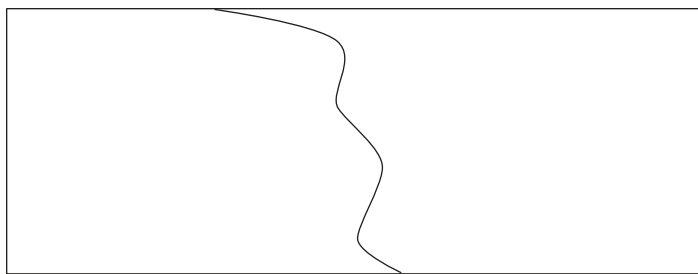
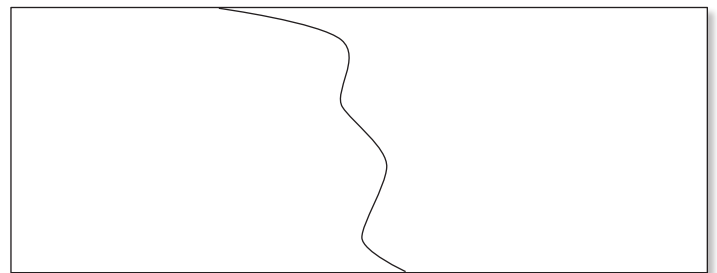
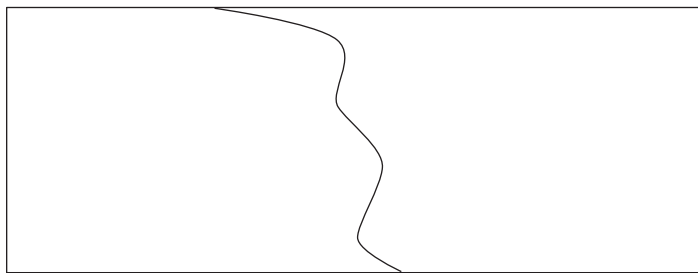
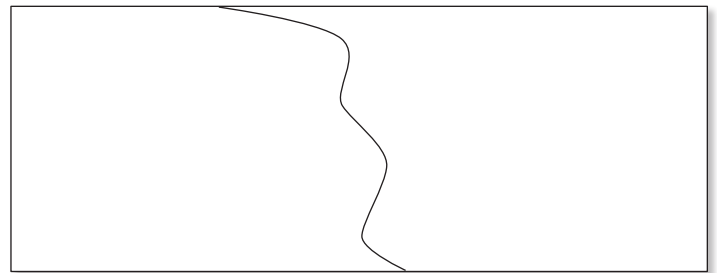
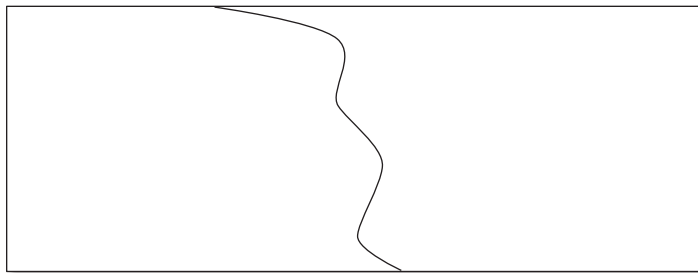
Long a	Long e	Long i	Long o	Long u
<u>cake</u>				



# Word Family Puzzles

1. Choose a Word Family.
2. On the left side of the shape, write a beginning sound.
3. On the right side of the shape, write a word family ending.
4. Cut out the shapes and give them to a friend to solve.

For example:



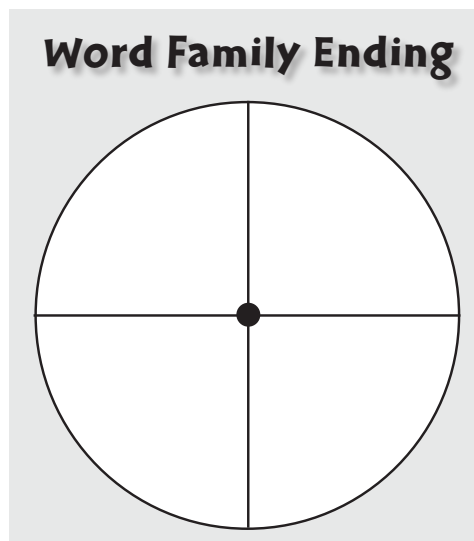
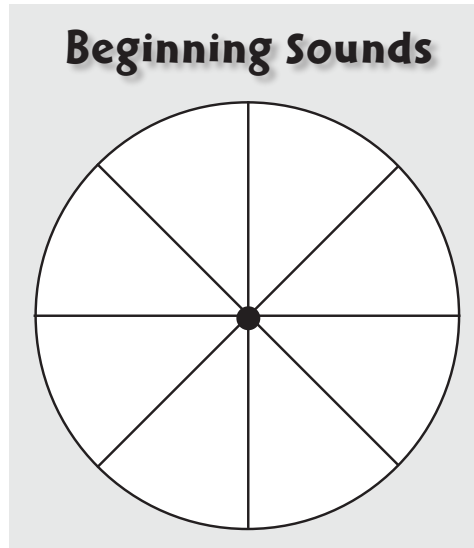
NAME: \_\_\_\_\_



# Spin the Wheels

1. On one wheel, write the beginning sounds. On the other wheel, write the ending sounds.
2. Use a paper clip as a spinner and hold it in place with a pencil. Spin both of the spinners.
3. Write the letters in the chart under the heading.
4. Circle the words if they make a real word.
5. Then spin again!

Beginning Sound	Word Family Ending	Word





# Word Family Bingo

**Step 1:** Choose one Word Family.

**Step 2:** Brainstorm all of the words you know from this family.

**Step 3:** Choose eight words from your list.

**Step 4:** Write the words on the Bingo cards for four friends. Make sure you put them in different spots on the cards.

**Step 5:** Call the words out and see who gets a Bingo first!

Word Family Bingo		
		

Word Family Bingo		
		

Word Family Bingo		
		

Word Family Bingo		
		