

NAME: _____



Activity One

The Music of Your Heart

Billie Jo is a music lover. She is taught piano by her mother and is recruited to play in a local band. After the fire, her music dreams are paused. As she grows up, her love of piano doesn't die and starts to grow. Music can help people get through many tough times. It also adds to all of the happy memories of our life.

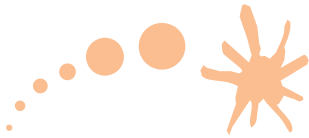
What music do you love? How has it impacted your life? Is there a song that reminds you of fun times with your friends? Maybe there is a sad song that brings a tear to your eye? What do you listen to when you want to feel calm?

Your task is to create a soundtrack of your most memorable songs. It could be a list of your favorites, or ones that have a special memory. Be sure to include both the song title and the artist. Aim to have ten songs to share with your class. You will play a short clip from a few songs to share with your peers.

Looking to get creative? Imagine your song selections will be on an album. What would the cover art be? Be sure to use a clever title and have eye-catching graphics.



NAME: _____



Activity Two

Caused by Climate



The family farm is constantly troubled by dust storms. The weather destroys their crops again and again. The climate of Oklahoma is dry, dusty and not farm-friendly. Weather is the daily temperature and precipitation in a place. Climate is the trend of the weather over a period of time.

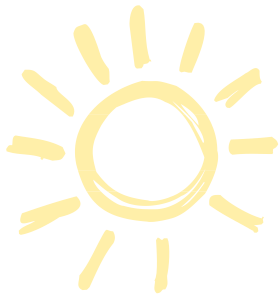
What is the climate like where you live? Climates can be hot and dry, like a desert. They can be wet and warm, like a rainforest. Maybe you live somewhere where it is cold and snowy! Our world has many different climates. Depending on where you live, the climate can affect you. Towns next to oceans will be built differently than towns in the middle of the desert. Some places will have more than one climate!

You will examine what the climate is like where you live. All of your information will be put on a one-page research report. Things to include:

- Your location (province/state, country, continent).
- Average temperatures in a season.
- Types of weather.
- 3 ways climate has affected your home.

Be sure to consider the large impacts of climate. Does it affect what food your country can grow? Does the weather require you to have special emergency supplies? Maybe the typical climate has changed in recent years. Your report should be easy to read and can include pictures.

NAME: _____



Activity Three

Gone But Not Forgotten



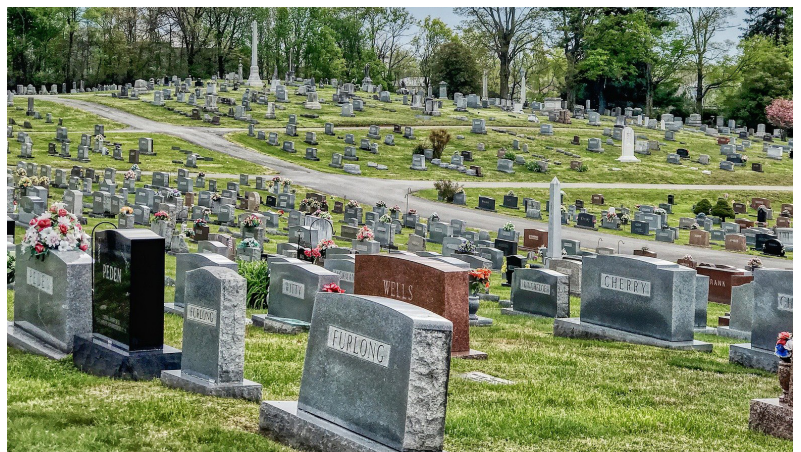
The farmers in Lubbock, Oklahoma have a lot of hard times. Their town has failed crops, dust storms and many losses. Death is common. Billie Jo suffers a huge loss with her mother and baby brother. Her grief is a theme throughout the whole book.

An obituary is a short, written piece. It honors the deceased person and is often put in newspapers. They are often in historical records. Sometimes, they are read aloud at funeral services by loved ones. Obituaries often include pictures of the person.

You will write an obituary for a special person to you. You can choose a loved one or a public figure. Most obituaries include:

- The full name of the person.
- Birthday.
- Death date.
- Names of close relatives.
- Special nicknames.
- A sentence or two about what they were known for.

If you choose a public figure, you may need to do some research. If you can find a picture, be sure to add it in. Obituaries are a nice way to honor those we love and admire. Remembering those before us can help us live in the present!





Activity Four

An Ode to Your Hometown



Billie Jo's story is written entirely in verse. It doesn't rhyme, or follow a certain pattern. Many of her entries focus on life in her small town. She writes about the store keepers, the farmers, and the cattle. There are details about going to school and daily celebrations. All of her thoughts (good and bad) about her home are recorded.

What does a day in your life look like? How does your town feel? Is it a busy, noisy city? Or a quiet country road? Who lives there? Are there some kooky characters in your village? You will write a poem about life in your hometown.

A first step would be to brainstorm your topic. Write all of the things that stand out to you. What is your town known for? What may surprise visitors? You may want to note who you live with. Who are your friends? Who are your enemies? Any idea is a good idea when brainstorming.

After you have your ideas put together, it's time to write! The poem doesn't need to follow any structure. It can rhyme or not rhyme. Embrace your daily life. Find interest in the everyday and ordinary. No detail is too small! There is wonder all around us, even in unlikely places.



NAME: _____



Activity Five

Down on the Farm



Farming is central to Billie Jo's town in Oklahoma. Many of the families depend on good crops to make money. In some families, it is their only income. The weather, the soil and the rain all affect the farm. Billie Jo's family is always hoping for rain to make the wheat grow. Her parents argue over planting new crops. Billie Jo's mother wants to add a pond to boost growth. It is hard to decide what will be best for the farm.

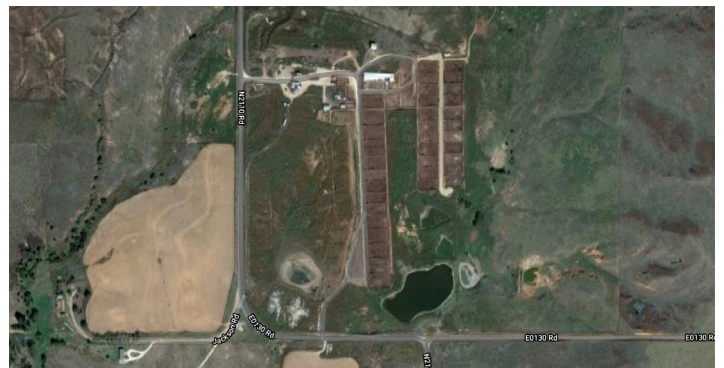
How would you design a farm? What would you want to grow? Would you plant crops or keep animals? Why not both! There are things you also need to consider:

- Water sources for animals.
- Equipment storage.
- Barn location.
- A house for your family.
- Variety of crops.

Your design should be done as an aerial view. This means it will be drawn as if you were looking at it from above. Think of it as how a bird would see it. You should mark each structure and field with an outline. You may find color coding different areas helpful as well. The sky's the limit with your future farm. You should hope for rainy weather!



A farm in Oklahoma



An aerial view of a farm in Oklahoma.

NAME: _____



Activity Six

A Ticket to Anywhere



People move for many reasons. Migrant workers travel to find seasonal work and move with their trades. Others seek their fortune in another city. In the book, many people move West in hopes to find a job. Billie Jo seems tired of small-town life. She dreams of getting out of town and starting fresh. When she does leave, she meets others who have left their homes. The experience changes her mind and she sees Lubbock in a new light.

Where would you move, if you could go anywhere? Is there a country you want to know more about? Would you stay close to home or go halfway across the world? Now that you know where you want to go, it's time to think of how you will get there.

Create a budget for the first month of living in your new home. Complete the chart below to calculate expenses.

Item	Price
Plane Ticket	
Apartment Rental (1 month)	
Groceries for a Week	X 4 weeks
Entertainment Budget	
Ticket Cost for a Local landmark	
Subway/Bus Pass	

Bon Voyage!