

NAME: _____



Activity One



Create a Legend, Share a Legend

The old Hikueru people often told tales of courage around the campfire. Write a tale that the old Hikueru people would share about Mafatu. Be sure to include lines about:

1. How Mafatu became afraid of the sea.

2. Mafatu's disappearance.

3. Events on the island.

4. Mafatu's narrow escape.

5. Mafatu's return to his people.

4. The exchange between Mafatu and Taviana Nui upon his return.

Create a mock campfire using some logs and tissue paper. Students can sit around the campfire and take turns sharing their tales with one another.

NAME: _____



Activity Two

Point of View Log Entry



Write a log entry from the point of view of the eaters-of-men. Be sure to include their thinking about:

Their missing spear.

Their rituals by the platform and the meaning behind them.

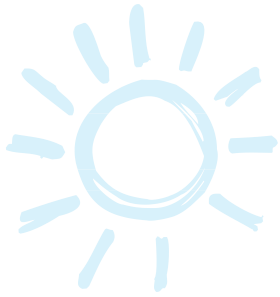
Discovering Mafatu.

Chasing Mafatu.

Their reasons for giving up the chase and their feelings about not catching Mafatu.

Write a reflection from Mafatu's point of view upon reading the log of the eaters-of-men.

NAME: _____



Activity Three



Acronym Poem

Write a poem using the word "COURAGE". For each line, write a word that starts with the first letter of each letter in the word "COURAGE". Your poem should also reflect the theme of courage. Draw a picture to go with your poem. At the bottom, write a sentence about what you think it means to show courage. Read your poems in groups and post them on a bulletin board for others to read.

C	_____
O	_____
U	_____
R	_____
A	_____
G	_____
E	_____

A large empty rectangular box with a light blue border, intended for drawing a picture related to the poem.

NAME: _____



Activity Four



Review Letter

Using the proper letter format, write a letter to a friend telling them what you thought about this story. Give a brief synopsis of the story, followed by your opinion. Share whether you would recommend this story and say why or why not.

	Date:
	Friend's name:
	Friend's address:
	Dear _____,
Synopsis {	
Opinion {	
Recommendation {	
	Yours Truly,
	Your Name:

NAME: _____



Activity Five

Write an Epilogue



Mafatu's life changes after he returns to the island. The Hikueru would treat him differently. Write an epilogue that explains what Mafatu's life would be like now that he has shown great courage beyond the expectations of his tribe.

Lined writing area for the epilogue.

NAME: _____



Activity Six

Song Themes

Choose three songs that relate to Mafatu's character traits and the themes (main messages) in *Call It Courage*. Write out the lines that most apply to your character and themes. Then, write an explanation of how they relate.

Song 1 - lyric lines that apply

How the lyrics relate to the character or theme.

Song 2 - lyric lines that apply

How the lyrics relate to the character or theme.

Song 3 - lyric lines that apply

How the lyrics relate to the character or theme.
