

NAME: _____



Activity One



Literary Devices

Authors use literary devices to deepen the understanding of the story for the reader. First, read the literary device definitions below. Then, read the quotes from the novel. State the literary device and say how they deepen your understanding of the story.

Simile—a comparison using like or as

Alliteration—repeating consonants

Allusion—reference to a historical person, place, event, or other text

“The people begin to point at us eagerly as they recognize a tribute train rolling into the city.”

Literary Device _____

Meaning added to the story _____

“My legs, arms, torso, underarms, and parts of my eyebrows have been stripped of the stuff, leaving me like a plucked bird, ready for roasting.”

Literary Device _____

Meaning added to the story _____

“I feel like a ton of coal was dropped on me.”

Literary Device _____

Meaning added to the story _____

“The star-crossed lovers from District 12.”

Literary Device _____

Meaning added to the story _____

NAME: _____



Activity Two

Flashbacks



Collins uses the literary device of flashbacks (a reference to any earlier time that provides meaning to the present time). She compares Katniss' life in the Seam to her life when she is in the Games. Choose three flashbacks and write about how Katniss uses her previous experiences in the Seam to help her in the Games.

Flashback 1

How Katniss uses this experience to help her in the Games.

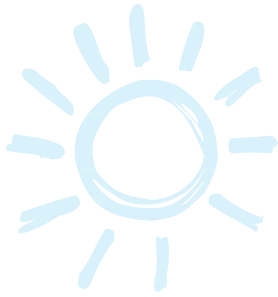
Flashback 2

How Katniss uses this experience to help her in the Games.

Flashback 3

How Katniss uses this experience to help her in the Games.

NAME: _____



Activity Three



Politics of Oppression

The Capitol uses various methods to oppress the Districts. Identify some of their methods and explain how these methods are used to maintain order in the Districts.

Method: _____

Maintain order: _____

Method: _____

Maintain order: _____

Method: _____

Maintain order: _____

Method: _____

Maintain order: _____

NAME: _____



Activity Four



Compare

When Katniss first sees the Capitol, she realizes that “the cameras have not lied about its grandeur. If anything, they have not quite captured the magnificence...” Use the following T-Chart to compare life in the Districts with life in the Capitol.

Districts	The Capitol
Food	
Clothing	
Daily Activities	
Media	

NAME: _____



Activity Six

Write a Paragraph

In this activity you will learn how to write a clear, structured paragraph. Complete this graphic organizer and write a paragraph using complete sentences and this structure.

Topic Sentence:

Given her circumstances, it is understandable that Katniss has difficulty trusting others.

Provide an example of, and the reason why, Katniss does not trust someone.

Explain how this lack of trust affects Katniss' decisions.

Provide a second example of, and the reason why, Katniss does not trust someone.

Explain how this lack of trust affects Katniss' decisions.

Provide a third example of, and the reason why, Katniss does not trust someone.

Explain how this lack of trust affects Katniss' decisions.

Write a concluding statement that summarizes the paragraph and rephrases the topic sentence.
