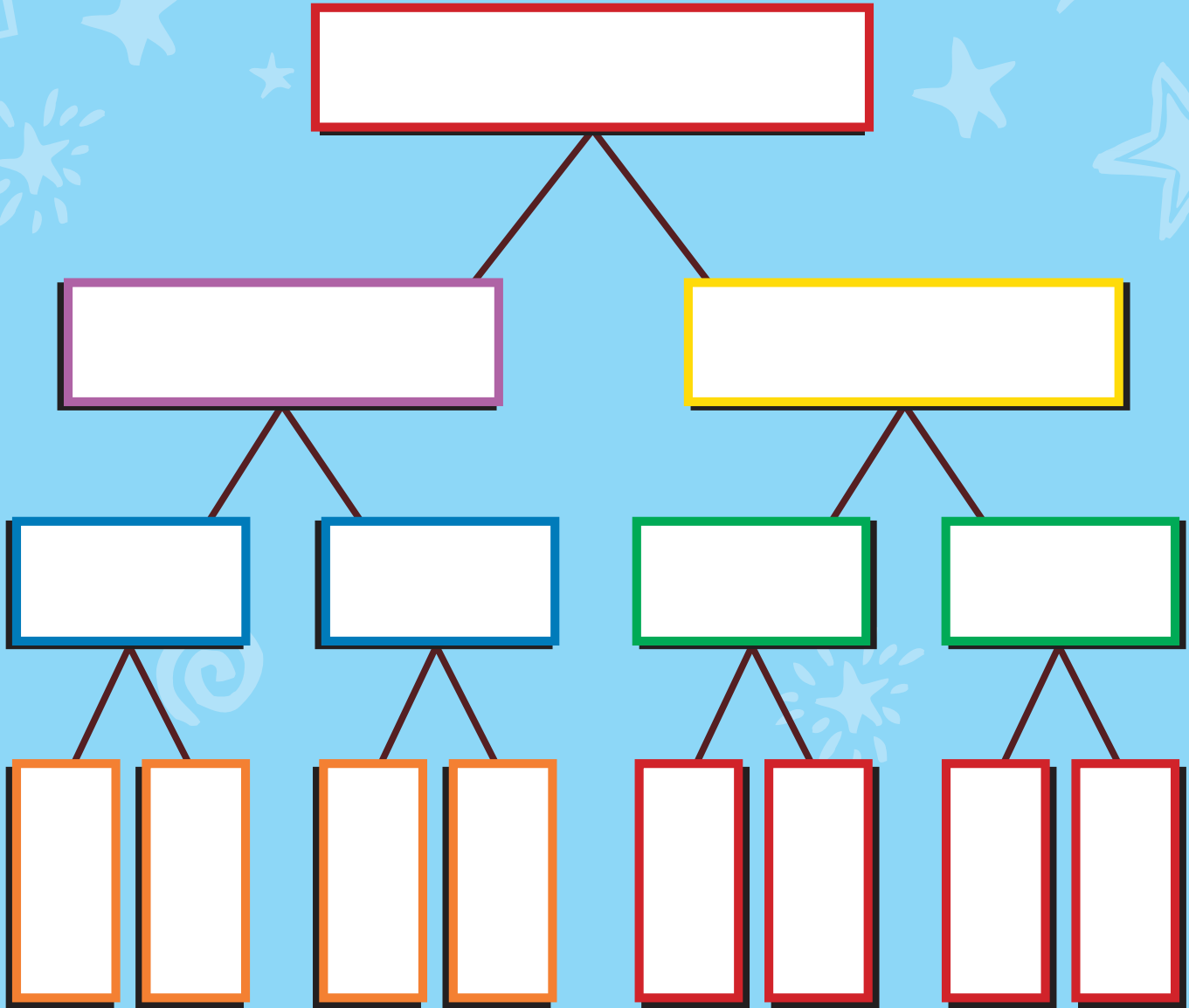


# Family Tree



Complete the first organizer with the names of your family members. Complete the second organizer with the names of Bud's family members. Compare both families.



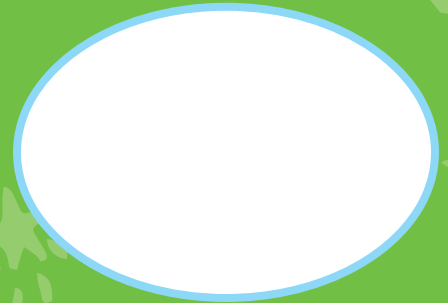
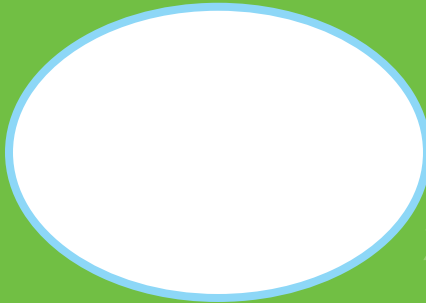
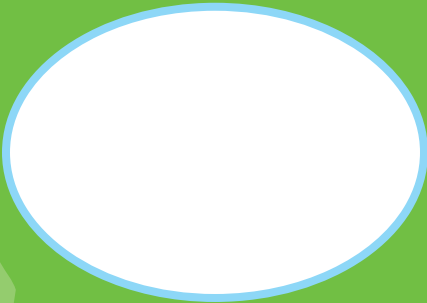
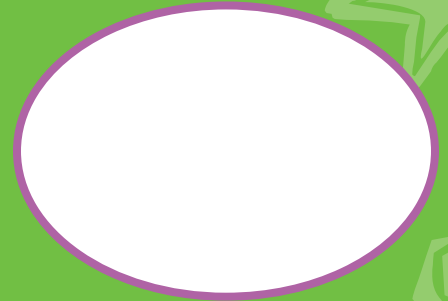
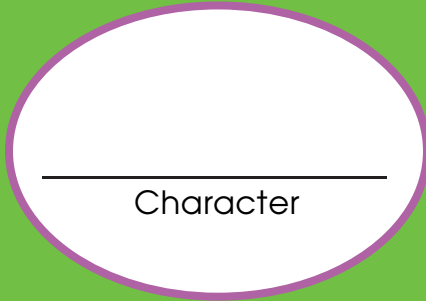
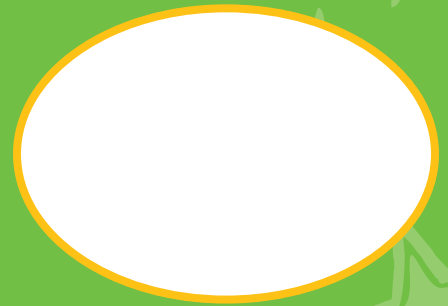
How is your family similar to Bud's family? How are they different? Do you have a connection with Bud?

---

---

---

# Character Analysis



For each item above, write a sentence explaining how it describes the character you have chosen.

1. \_\_\_\_\_
2. \_\_\_\_\_
3. \_\_\_\_\_
4. \_\_\_\_\_
5. \_\_\_\_\_
6. \_\_\_\_\_
7. \_\_\_\_\_
8. \_\_\_\_\_

# Bud's "Homes"



What were the different "homes" (or places) that Bud lived in over the course of the novel? List them in the order they were introduced in the book. What was one important lesson he learned at each place?

6

1	2	3	4	5		

In which home did Bud learn the most? Explain your answer.

---

---

---

---