

Different Perspectives



Choose an important incident from the novel that involved at least three characters (i.e. the wedding of Izzy Diamondstein and Margaret Draper). Now consider the same incident from different perspectives and complete the chart below.

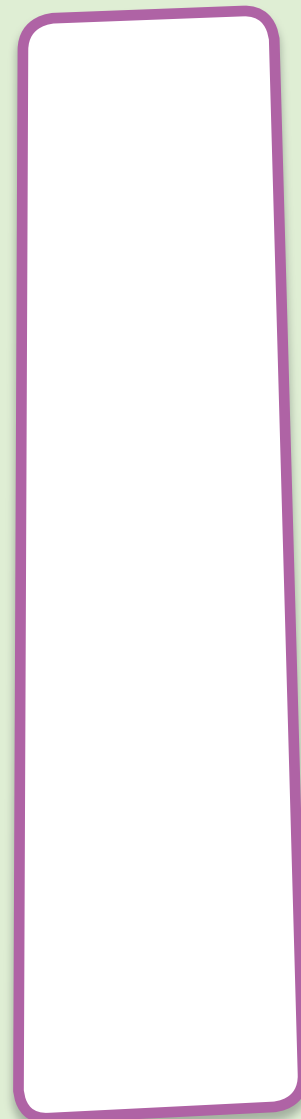
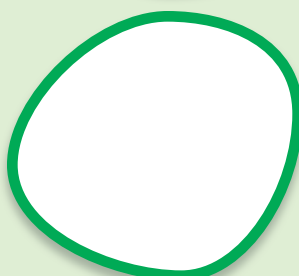
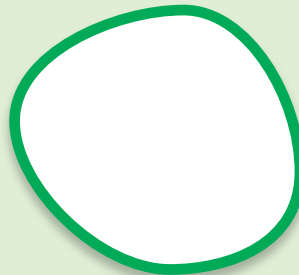
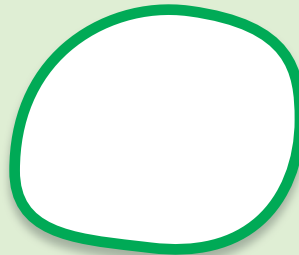
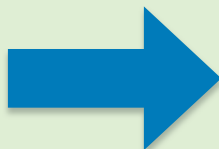
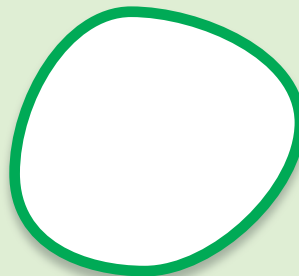
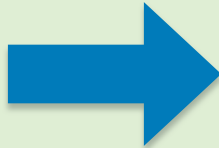
Incident: _____

View Points

Thoughts/Feelings

Impact

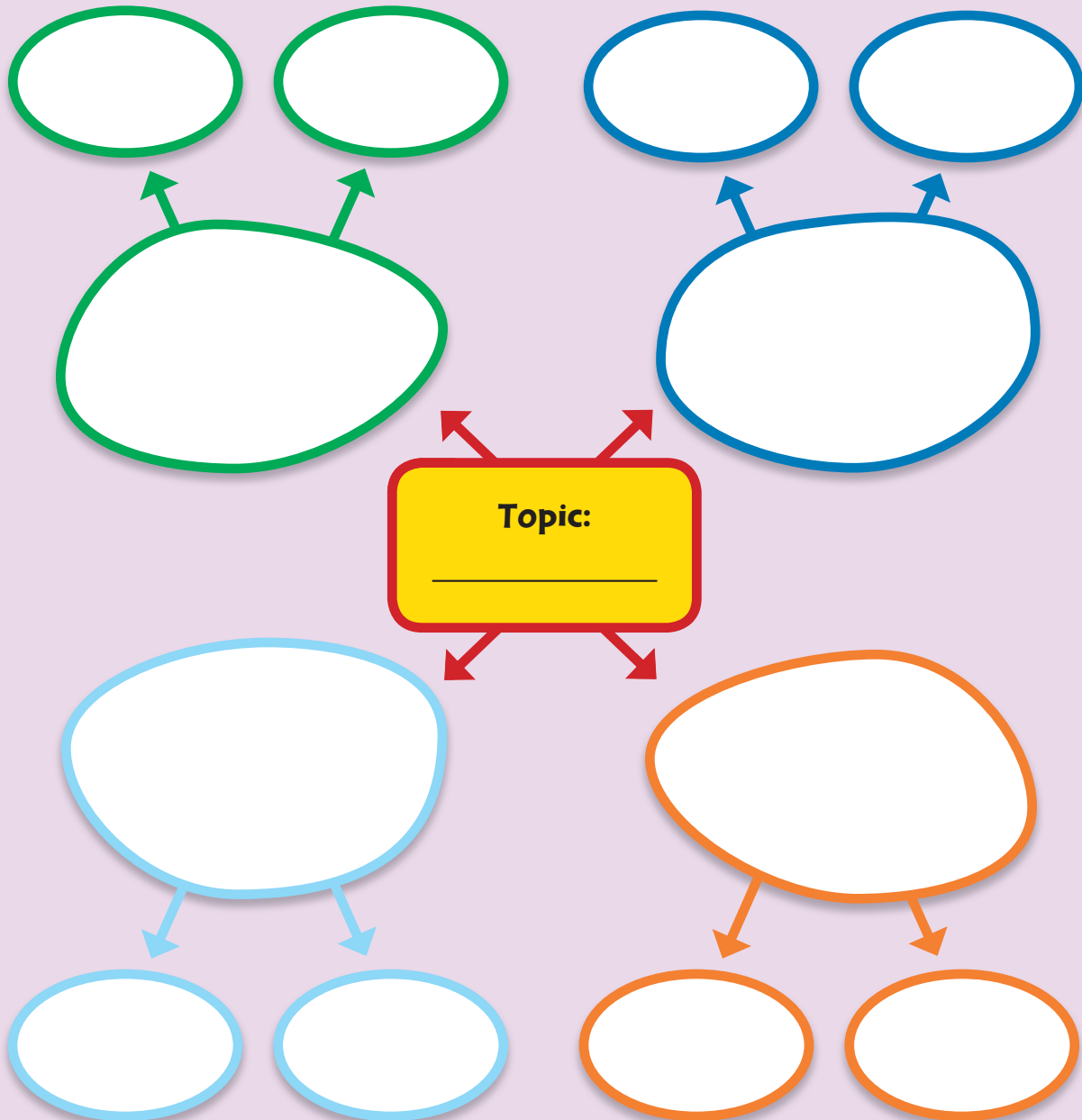
Reflections



Word Web



Consider one of the topics highlighted in ***The View From Saturday*** (i.e. turtles, Florida, cruise ships, the Academic Bowl, bullies, Disney World, northeasters). Write your choice of topic in the middle circle of the Word Web. Now, add details about this topic in the smaller circles.



Story Map



Complete each section with the appropriate details.

Setting (Time and Place):

Characters

Major:

Minor:

Problem/Challenge:

Plot/Key Events:

Resolution: