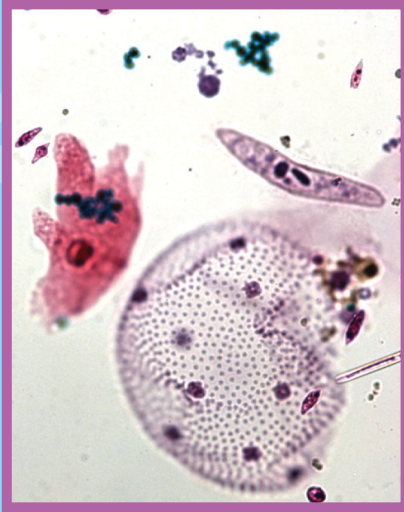


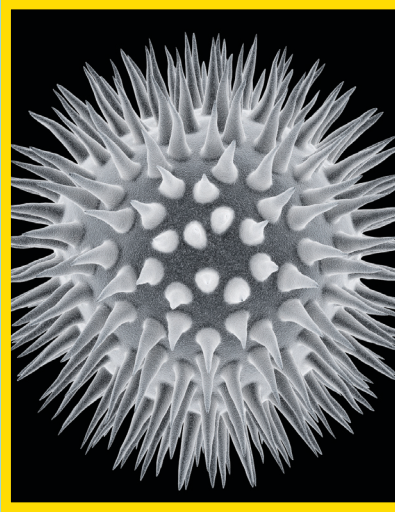
Single-celled & Multicellular Organisms



Single-celled Organisms



Amoeba



Bacteria



Paramecium

Multicellular Organisms



Fern Plant



Mushroom

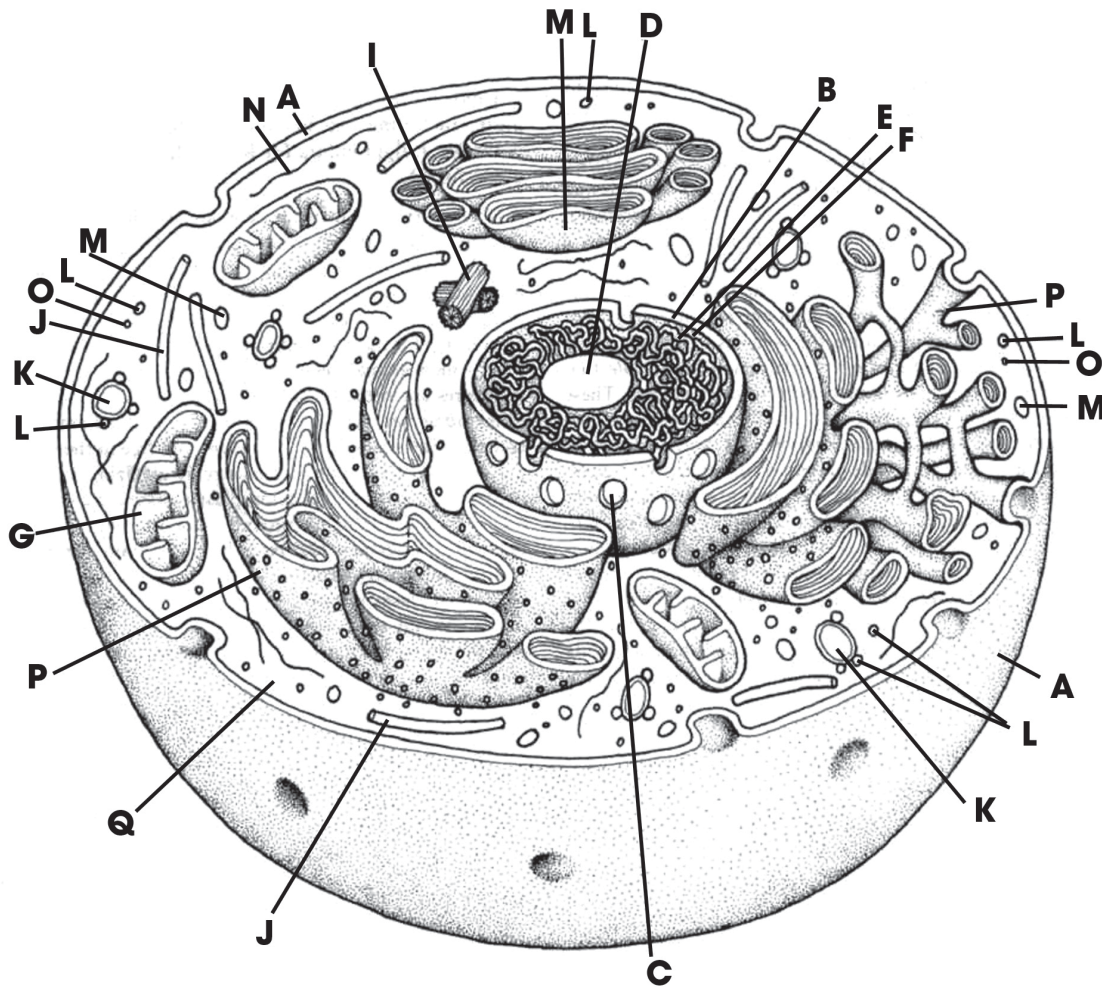


Worm

Parts of a Cell



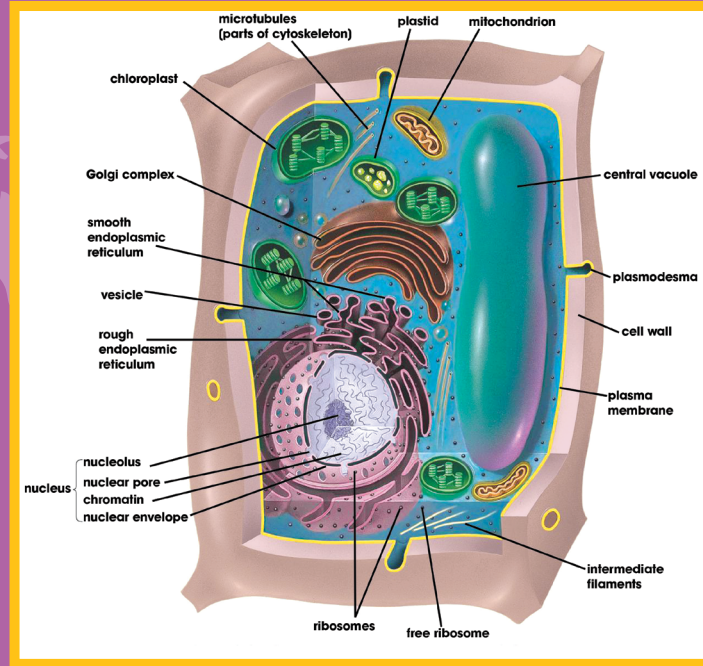
- | | |
|---------------------------|--------------------------------|
| A Cell Membrane | J Microtubule |
| B Nuclear Envelope | K Vacuole |
| C Nuclear Pore | L Lysosome |
| D Nucleolus | M Microbody |
| E Chromatin | N Microfilament |
| F Nuclear Sap | O Ribosome |
| G Mitochondrion | P Endoplasmic Reticulum |
| H Golgi Complex | Q Hyaloplasm |
| I Centriole | |



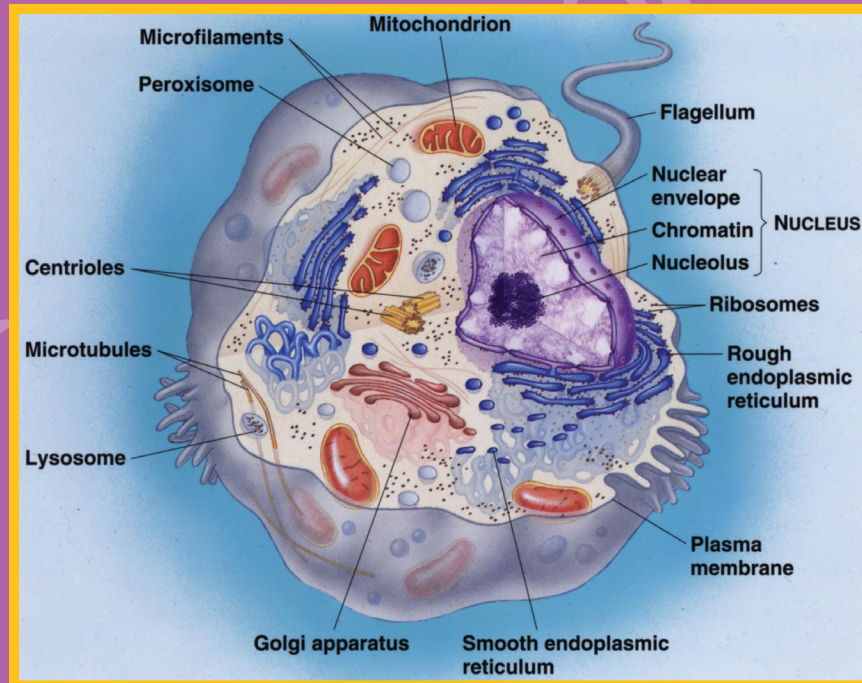
Plant & Animal Cells



Plant Cell



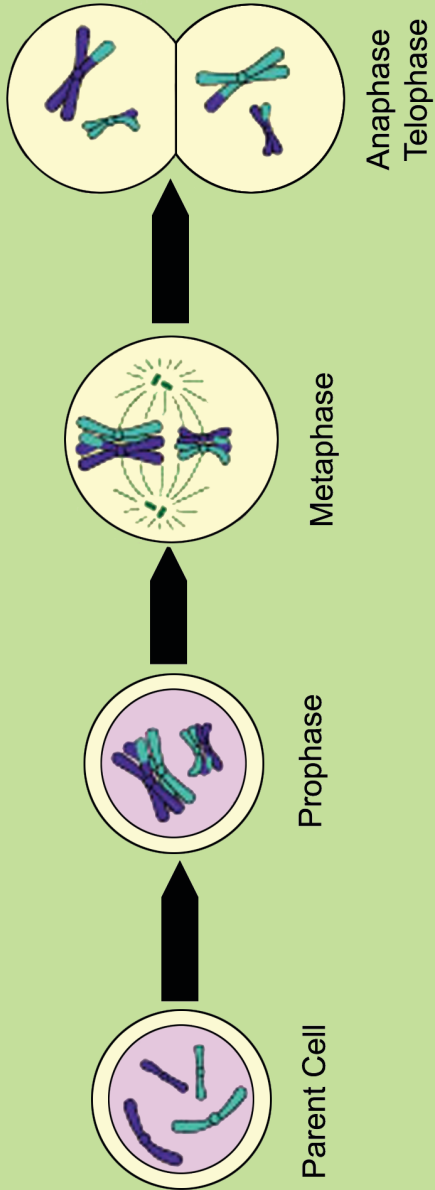
Animal Cell



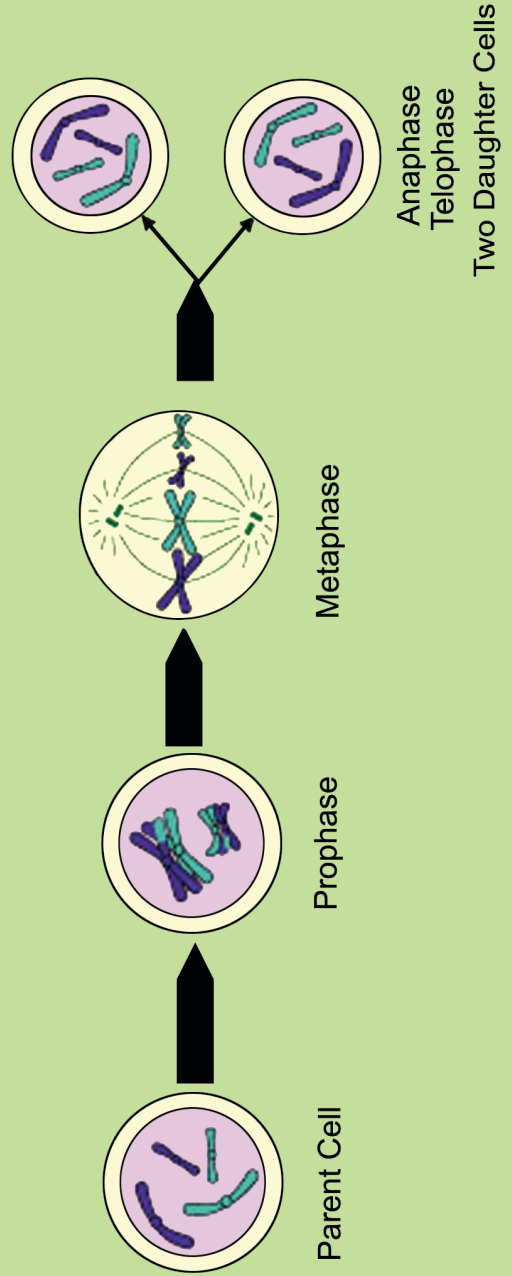
Meiosis & Mitosis



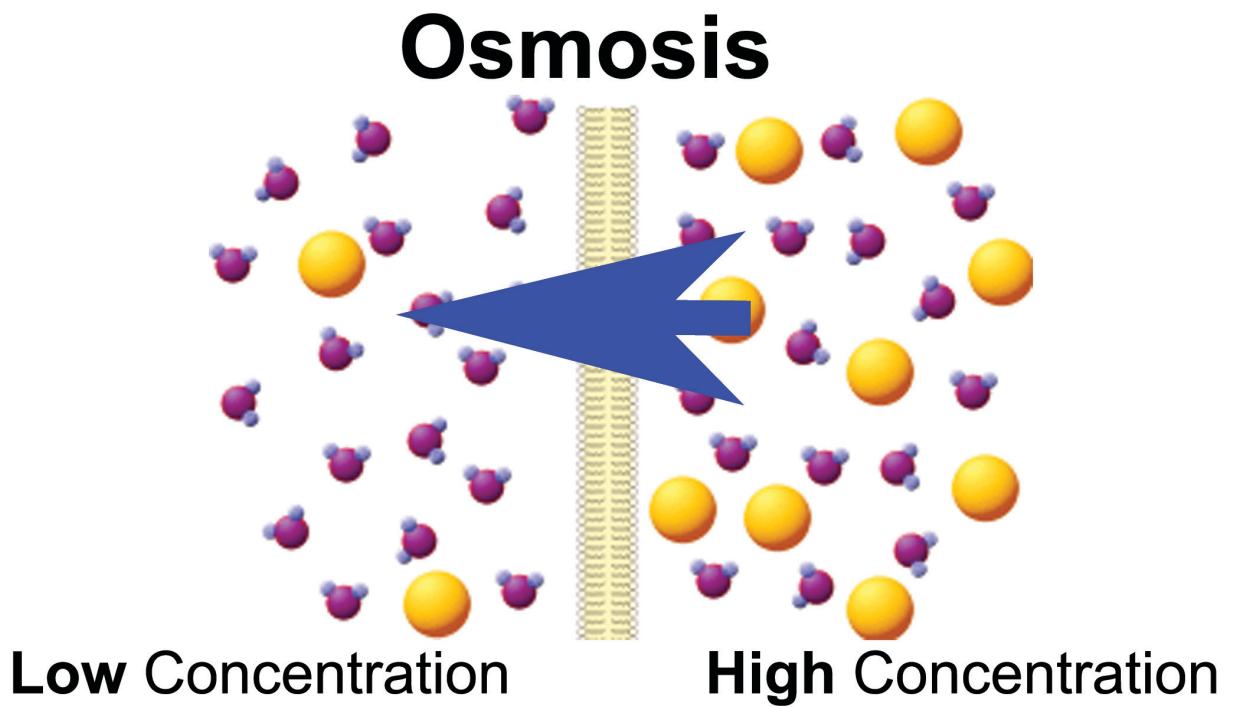
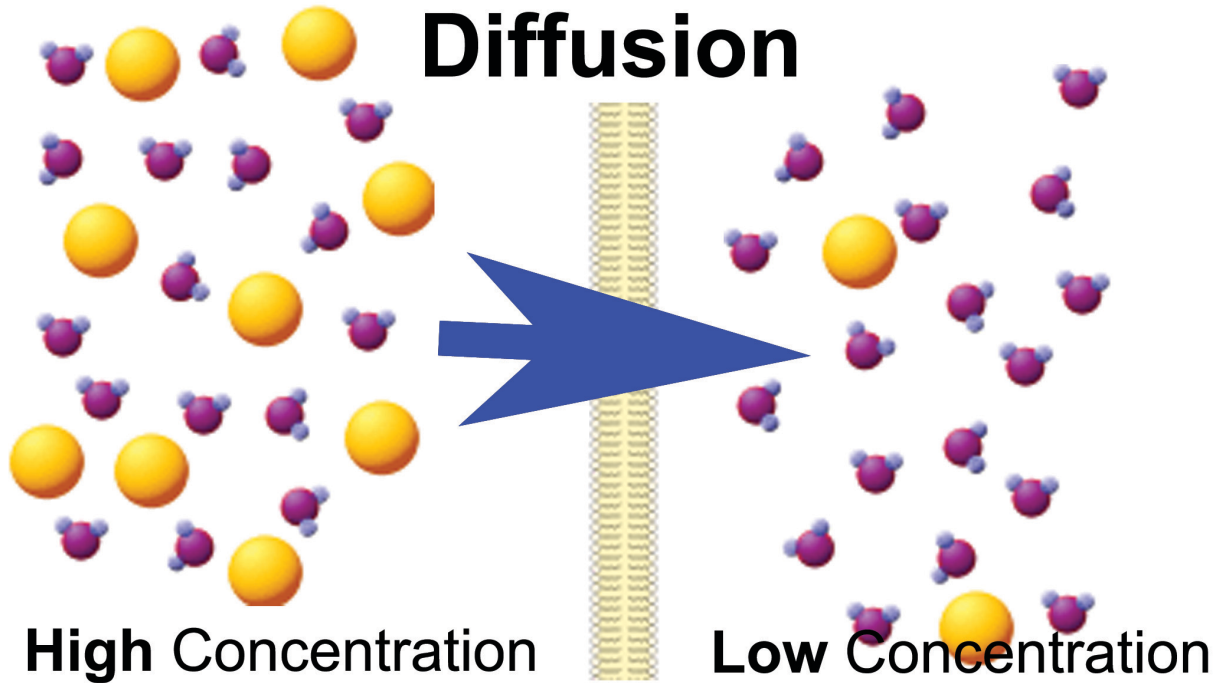
Meiosis



Mitosis



Diffusion & Osmosis



Frog Embryo Cells

