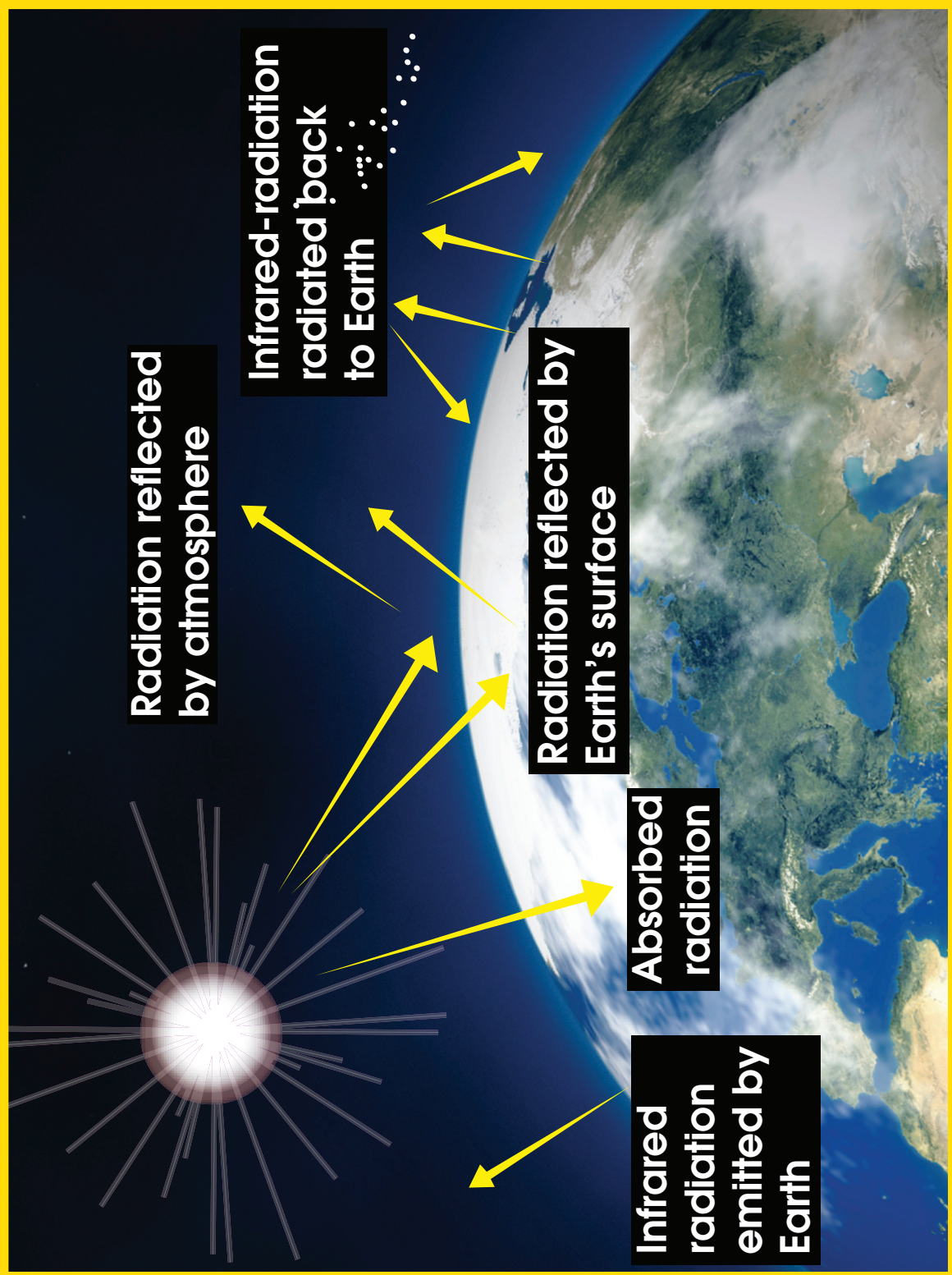


The Greenhouse That Is Earth



Notice that light comes easily through both the glass and the atmosphere. When the light strikes the surface, the surface heats up and gives off heat. In both cases, some of the heat is trapped because heat doesn't pass through the glass or the atmosphere as easily as the light got in.

Household Electrical & Gas Consumption



Household Gas Meter



Household Electrical Meter

Electrical Service

Detailed Billing Information

| Meter # | Season | Service Category | Peak | | KWh Usage | Unit Charge | Amount |
|---------|--------|------------------------|--------|--|-----------|-------------|----------|
| 13313 | WINTER | Power Factor Rate | | | | | |
| | | KWH | ON PK | | 1970 | 0.0594 | \$117.02 |
| | | | OFF PK | | 103 | 0.0396 | \$4.08 |
| | | Total KWH Consumption | | | 2073 | | |
| | | Total Electric Charges | | | | | \$120.10 |

Gas Service

Detailed Billing Information

| Meter # | Season | | | | Therms Used | Unit Charge | Amount |
|---------|--------|---------------------|--|--|-------------|-------------|----------|
| 2345 | WINTER | | | | | | |
| | | Current Gas Charges | | | 130 | 0.928 | \$120.64 |
| | | Total Gas Charges | | | | | \$120.64 |

Household Gas and Electric Bill

Ways to Reduce Your Carbon Footprint at Home



Buy Local Vegetables



Compost & Recycle



Ride Your Bike or Walk



Switch to Energy Star Appliances

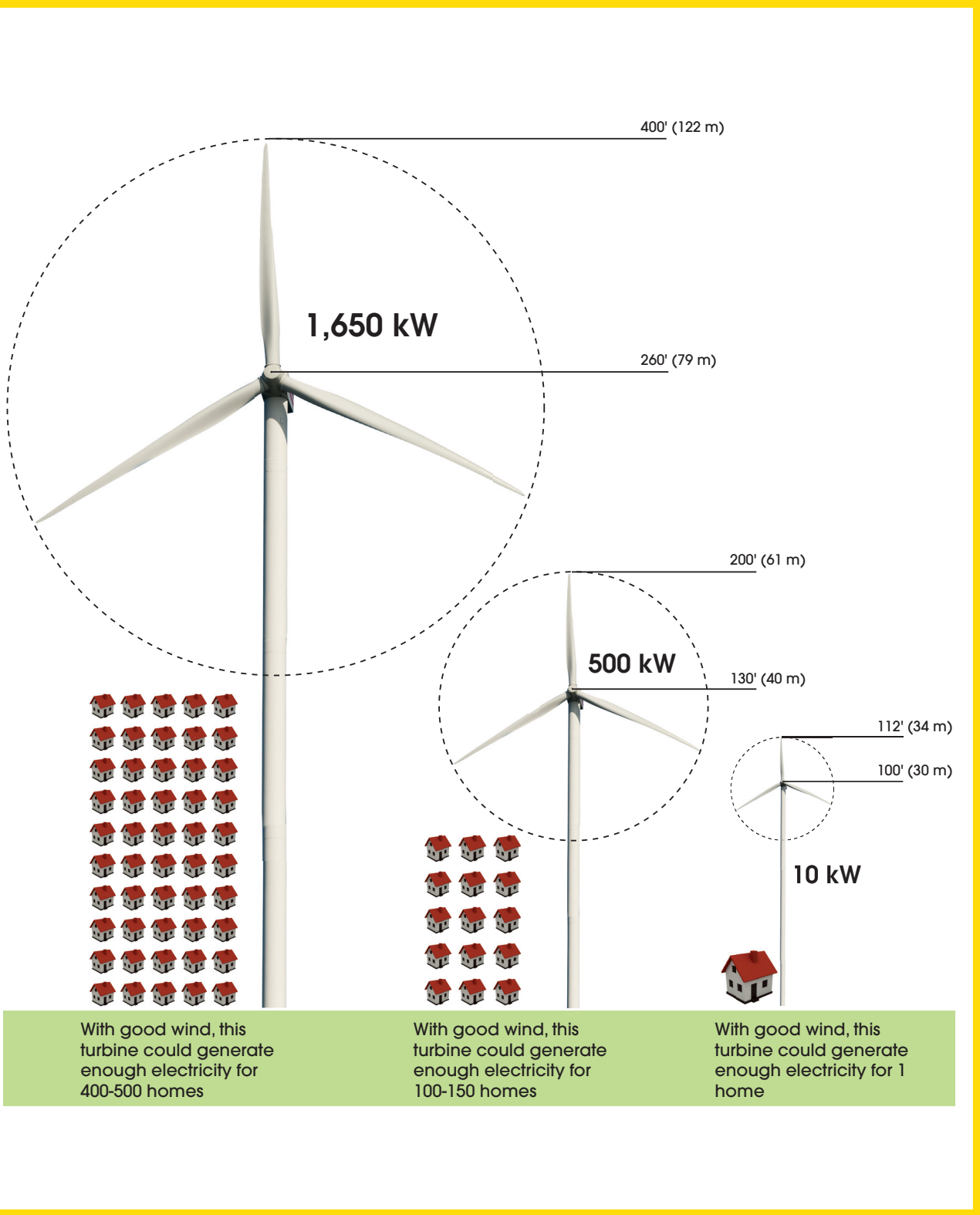


Use a Clothes Line to Dry Clothes



Use Alternative Sources of Energy

Wind Turbine Capacity

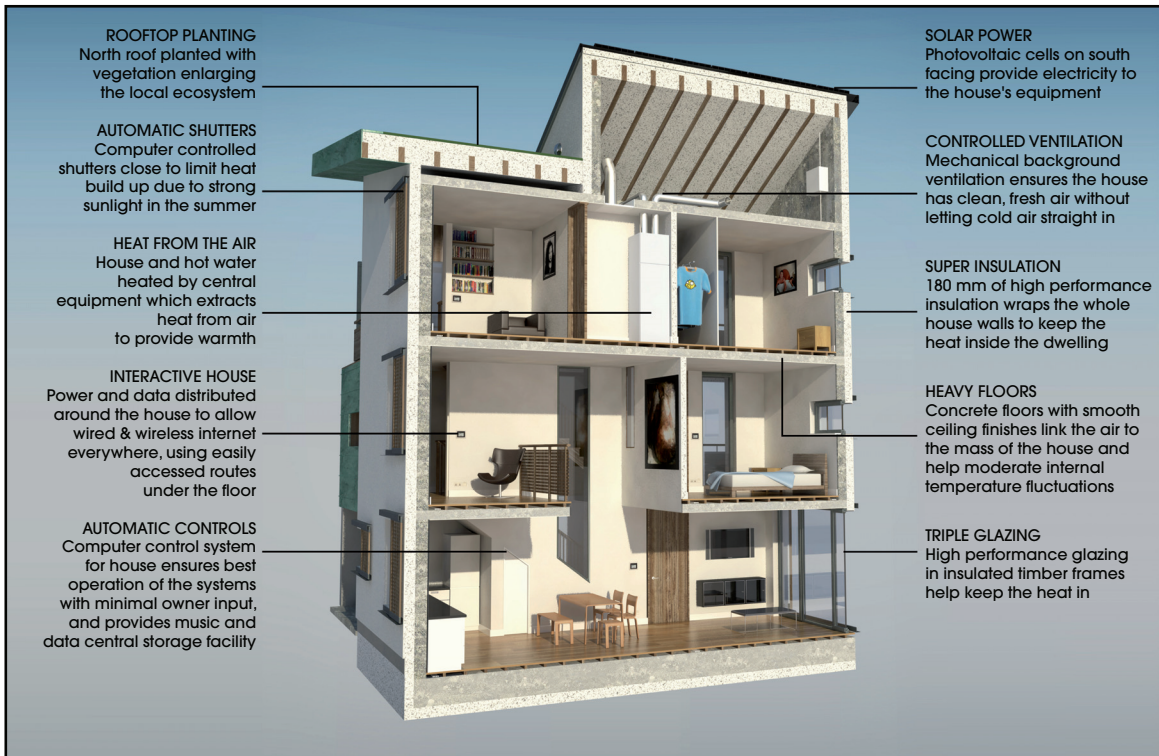


With good wind, this turbine could generate enough electricity for 400-500 homes

With good wind, this turbine could generate enough electricity for 100-150 homes

With good wind, this turbine could generate enough electricity for 1 home

Choose Eco Friendly Homes



ROOFTOP PLANTING
North roof planted with vegetation enlarging the local ecosystem

AUTOMATIC SHUTTERS
Computer controlled shutters close to limit heat build up due to strong sunlight in the summer

HEAT FROM THE AIR
House and hot water heated by central equipment which extracts heat from air to provide warmth

INTERACTIVE HOUSE
Power and data distributed around the house to allow wired & wireless internet everywhere, using easily accessed routes under the floor

AUTOMATIC CONTROLS
Computer control system for house ensures best operation of the systems with minimal owner input, and provides music and data central storage facility

SOLAR POWER
Photovoltaic cells on south facing provide electricity to the house's equipment

CONTROLLED VENTILATION
Mechanical background ventilation ensures the house has clean, fresh air without letting cold air straight in

SUPER INSULATION
180 mm of high performance insulation wraps the whole house walls to keep the heat inside the dwelling

HEAVY FLOORS
Concrete floors with smooth ceiling finishes link the air to the mass of the house and help moderate internal temperature fluctuations

TRIPLE GLAZING
High performance glazing in insulated timber frames help keep the heat in

Carbon Neutral Home

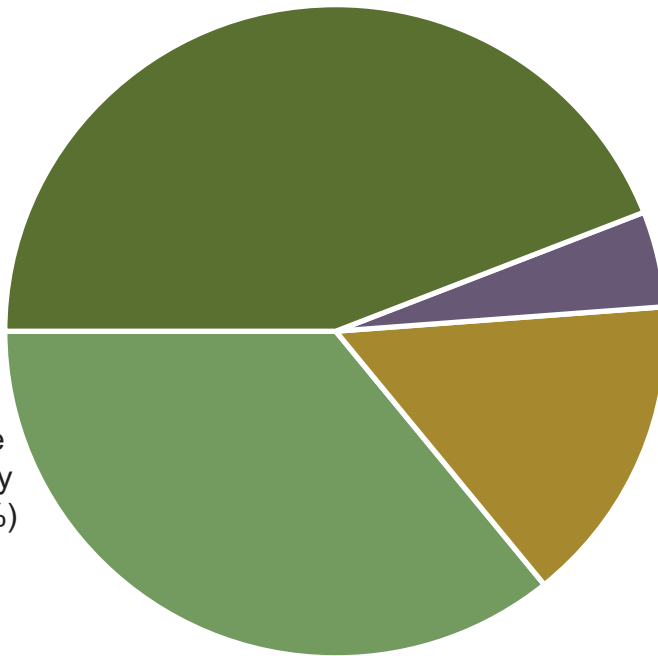


Eco Friendly Home

CO₂ Emissions for an Average American



Driving & Flying
(44.3%)



Recycling & Waste
(4.4%)

Food & Diet
(15.1%)

Home Energy
(36.2%)

