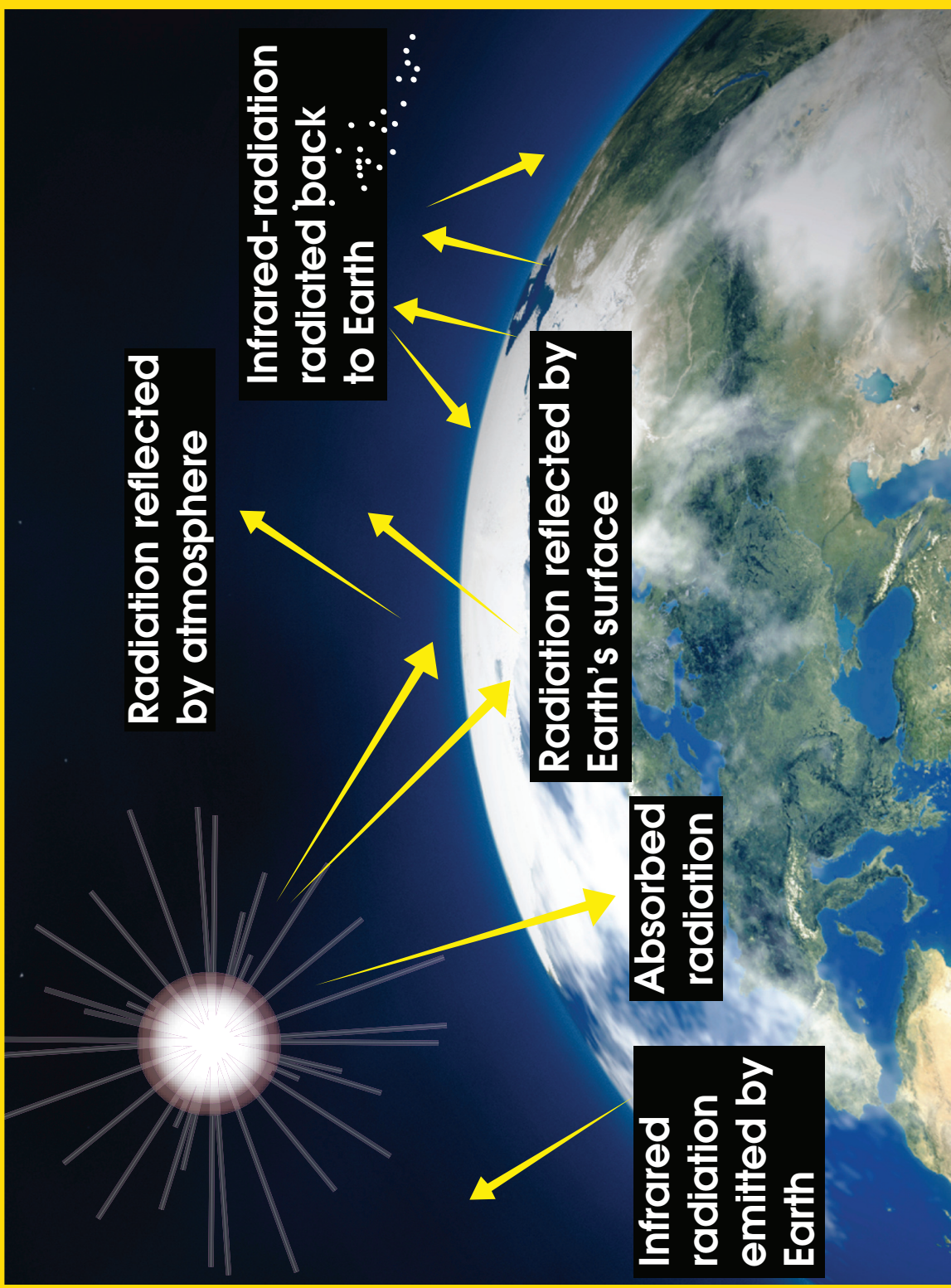


# The Greenhouse That Is Earth



Notice that light comes easily through both the glass and the atmosphere. When the light strikes the surface, the surface heats up and gives off heat. In both cases, some of the heat is trapped because heat doesn't pass through the glass or the atmosphere as easily as the light got in.



# Household Electrical & Gas Consumption



Household Gas Meter



Household Electrical Meter

## Electrical Service

### Detailed Billing Information

Meter #	Season	Service Category	Peak		KWh Usage	Unit Charge	Amount
13313	WINTER	Power Factor Rate					
		KWH	ON PK		1970	0.0594	\$117.02
			OFF PK		103	0.0396	\$4.08
		Total KWH Consumption			2073		
		Total Electric Charges					\$120.10

## Gas Service

### Detailed Billing Information

Meter #	Season				Therms Used	Unit Charge	Amount
2345	WINTER						
		Current Gas Charges			130	0.928	\$120.64
		Total Gas Charges					\$120.64

## Household Gas and Electric Bill

# Ways to Reduce Your Carbon Footprint at Home



Buy Local Vegetables



Compost & Recycle



Ride Your Bike or Walk



Switch to Energy Star Appliances

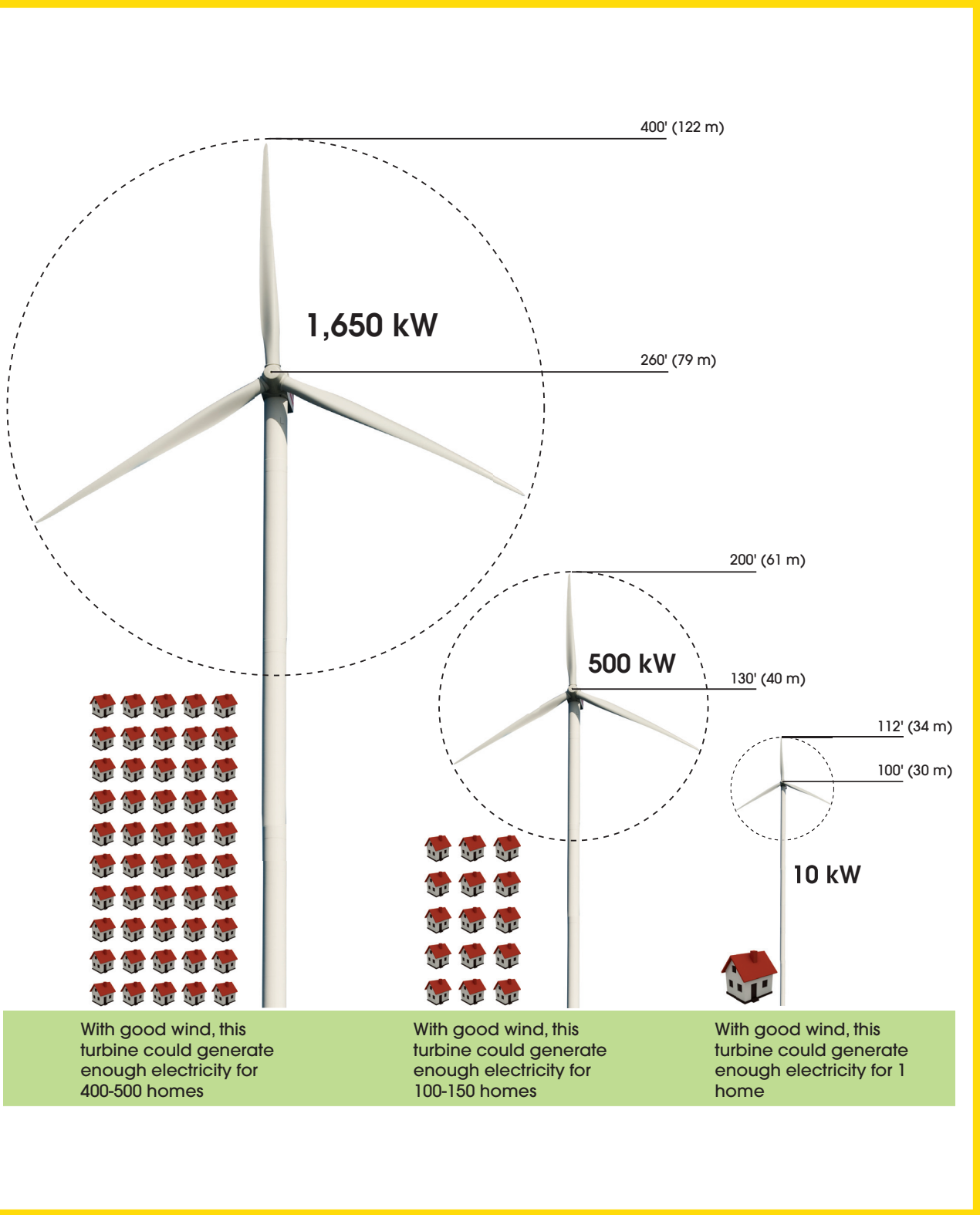


Use a Clothes Line to Dry Clothes

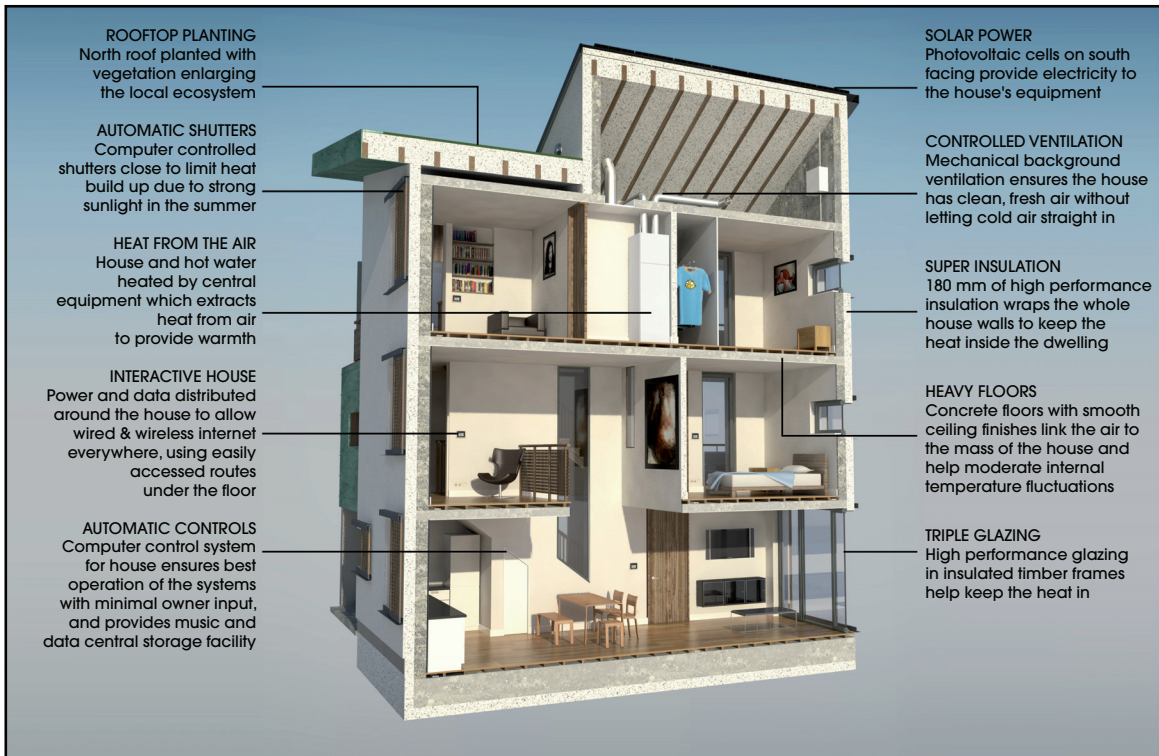


Use Alternative Sources of Energy

# Wind Turbine Capacity



# Choose Eco Friendly Homes

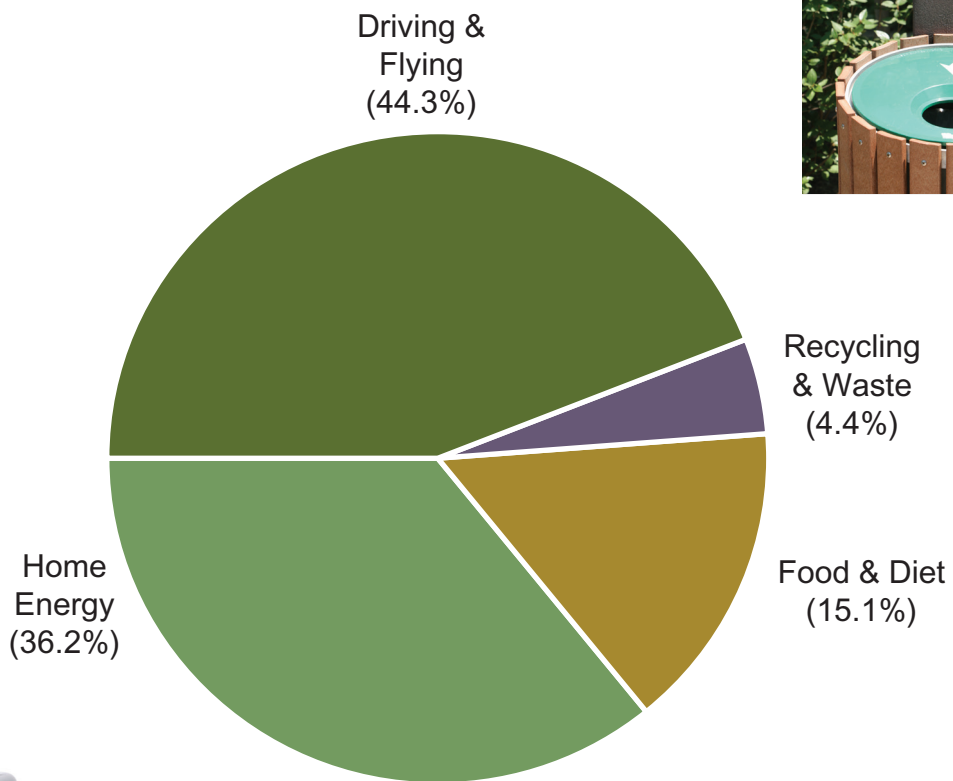


Carbon Neutral Home



Eco Friendly Home

# CO<sub>2</sub> Emissions for an Average American



# Lower Your School's Carbon Footprint Outside Initiatives



No Idling while dropping off or picking up



Install Bike Racks & Bike Lanes



Plant a School Garden



Plant Trees



School



Compost & Recycle as much as you can



Install Photovoltaic Cells on your School's Roof

# Lower Your School's Carbon Footprint Inside Initiatives



Turn off the lights when not in use (use energy efficient light bulbs)



Use Reusable lunch containers



Use both sides of the paper



Classroom



Recycle what you can



Turn down the heat in the winter  
Cut back on Air Conditioning in the summer



Unplug electrical equipment when not in use



# Recycling at School



Plastic Containers



Compost Food Waste



Steel & Aluminum Cans



Recycling Bin



Milk & Juice Containers



Newspaper, Writing Paper & Cardboard Packaging



Glass Bottles & Jars

# Green School Charter

## 1 Travel wisely by...

- Design activities to promote walking and cycling
- Use public transportation
- Organize a rideshare or carpool

## 3 Reduce Waste by...

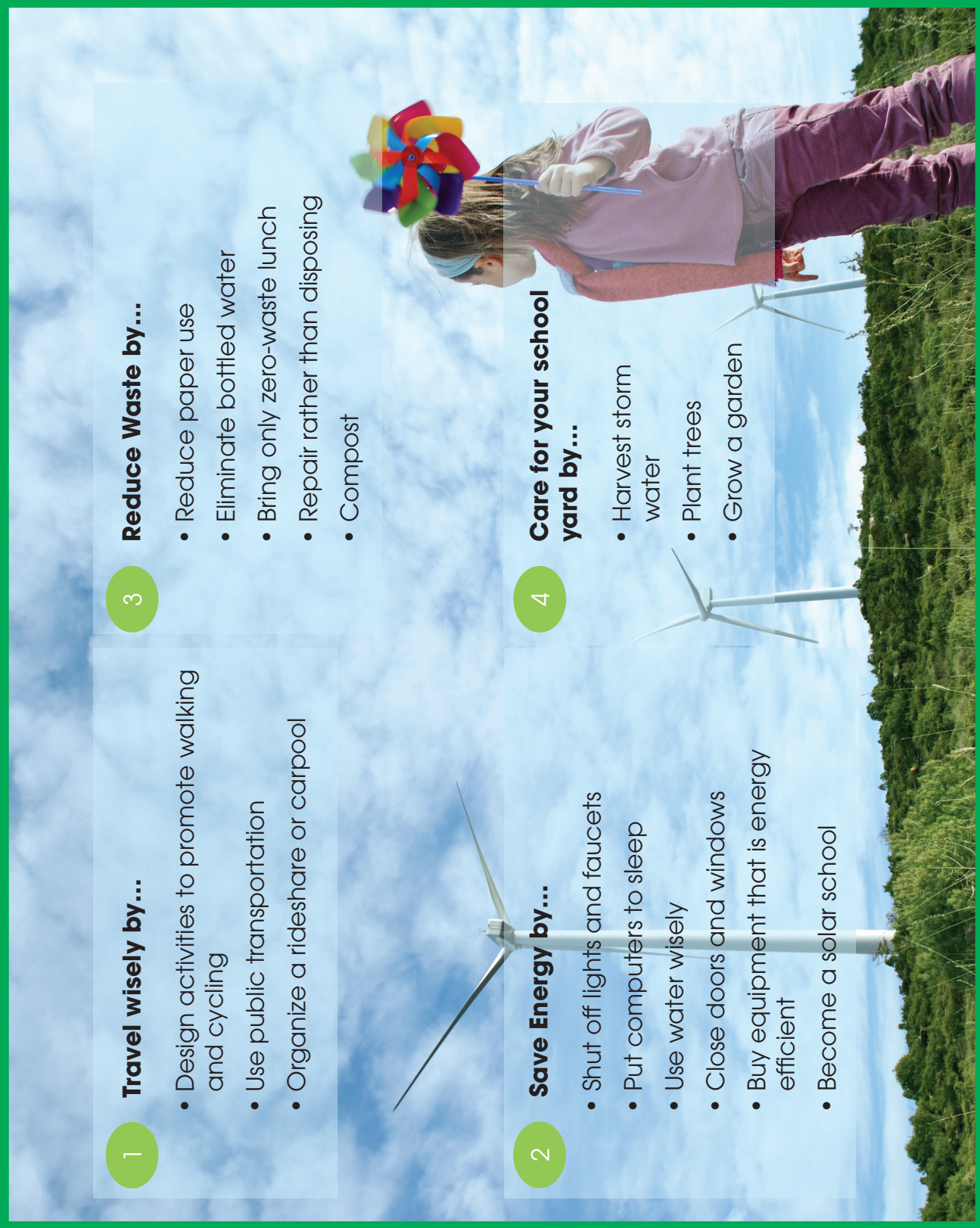
- Reduce paper use
- Eliminate bottled water
- Bring only zero-waste lunch
- Repair rather than disposing
- Compost

## 2 Save Energy by...

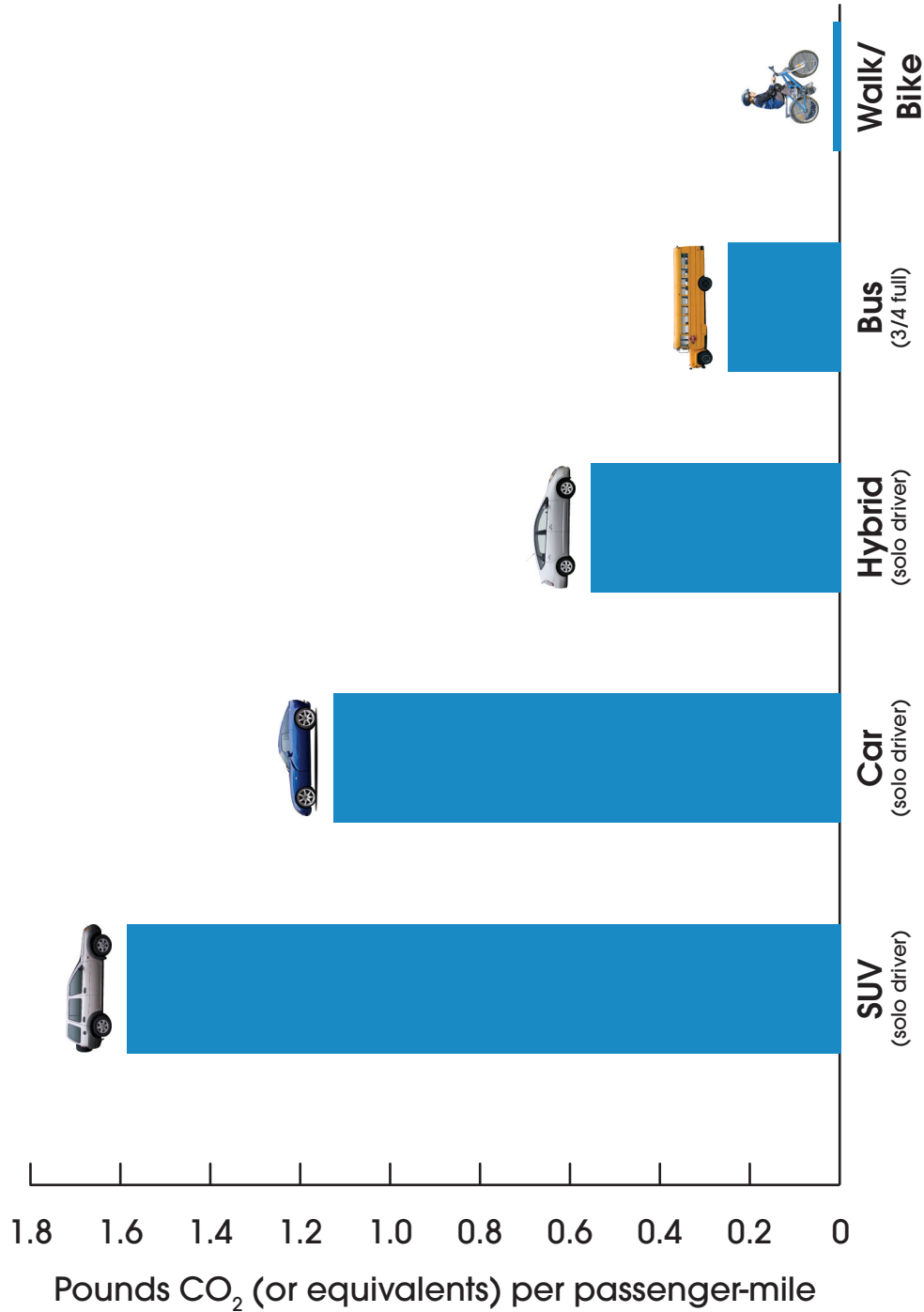
- Shut off lights and faucets
- Put computers to sleep
- Use water wisely
- Close doors and windows
- Buy equipment that is energy efficient
- Become a solar school

## 4 Care for your school yard by...

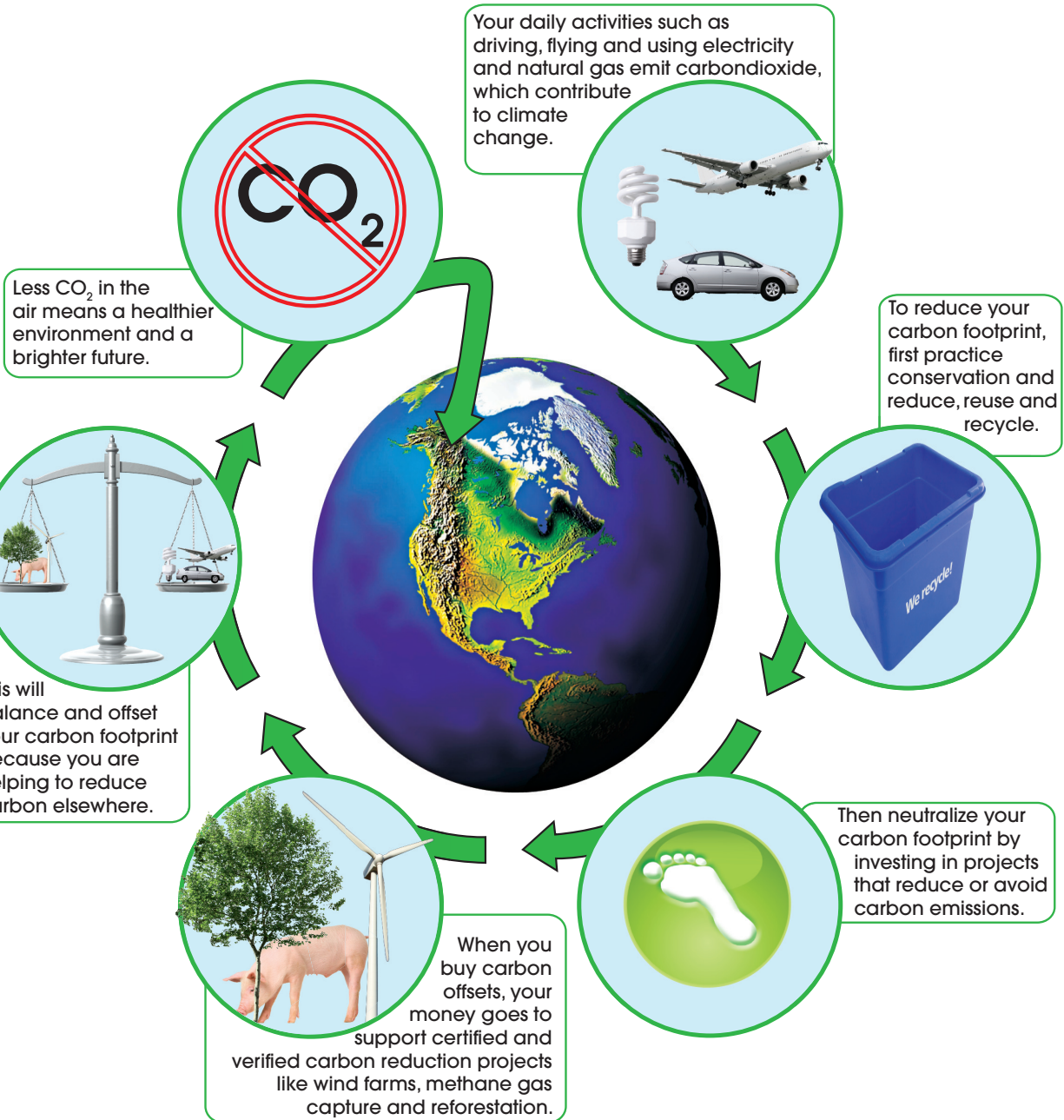
- Harvest storm water
- Plant trees
- Grow a garden



# Your Transportation Carbon Footprint



# How Carbon Offsets Work



# Carbon Neutral Community



At least nine ways to lower the carbon footprint of a community are shown or hinted at in the picture below. See if you can find them all.

# How Biofuel Works



# Alternative Energy



Photovoltaic cells



Solar water heater



Wind turbine



Hydro-electric dam



Methane generators



Geothermal power

# Alternative Transportation



Bicycle



City transit bus



Carpool



Walking



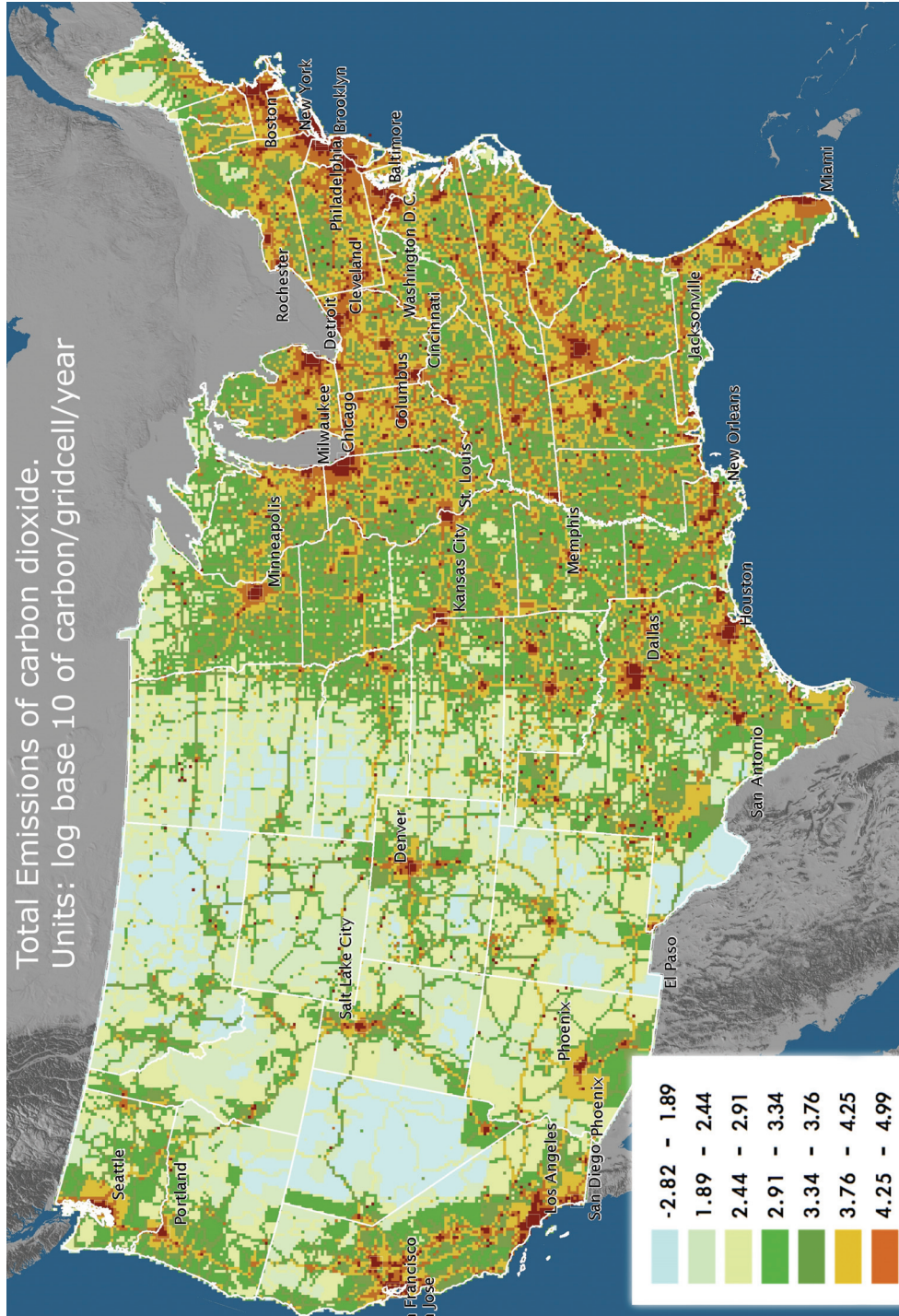
Self-balancing personal transportation device



Electric scooter



# Total Emissions of Carbon Dioxide



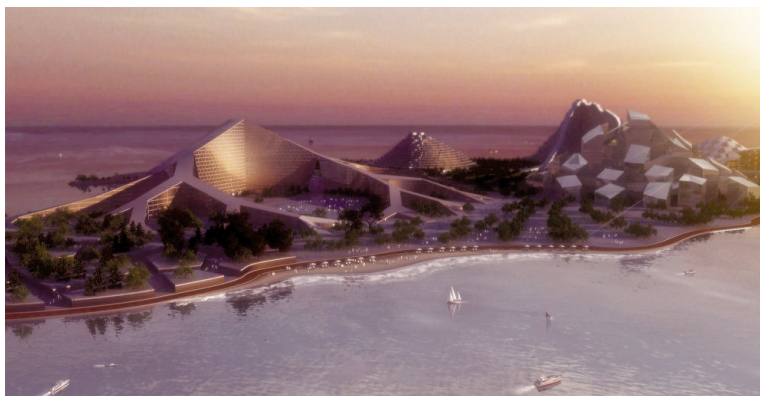
# Carbon Neutral Communities



Carbon neutral city of the future in Dubai. The self-sufficient city will house an estimated 1 million people.



North Port Quay, Australia, will be powered by wind, solar, and ocean waves. The city is designed to make walking as easy as possible.



Zira Island in the Caspian Sea, will build this eco-community and sustainable resort, powered by the wind and sun.



Dongtan, China, will get their food from local farms, energy from carbon neutral sources, and waste will be composted, processed, and reused.