

NAME: _____

Student Worksheet



Activity One

Animal Farm: The Comic

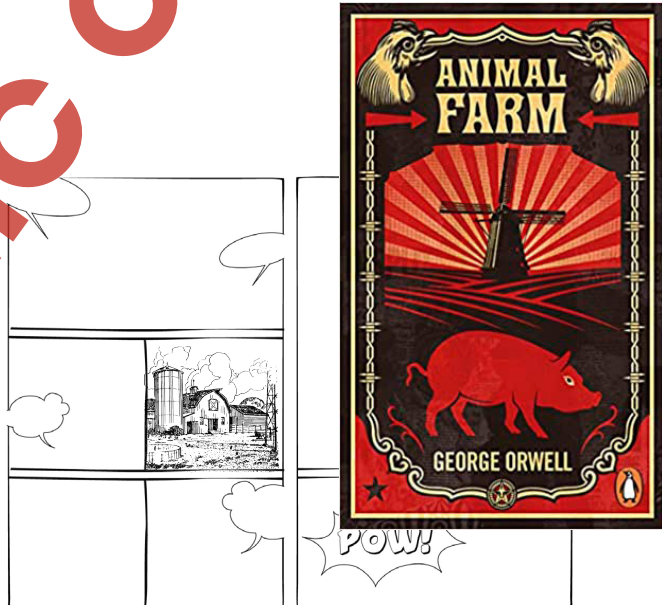
The novella *Animal Farm* was written by George Orwell and published in 1945. The book depicts an English farm where Mr Jones has drawn the anger of many of the animals due to his drinking and neglect. They are hungry and, eventually, talk of better days turns to full on rebellion. There are plenty of exciting scenes within the book, including the Battle of Cowshed, in which a group of local farmers attempt to take back The Manor Farm from the animals.

Go back through the book and select an exciting or an important moment that has significance within the context of the book. Use this moment as inspiration for a comic to showcase the event in a visual medium. The moment should have enough substance that it will make a compelling image.

Your comic can take advantage of multiple panels like a comic strip, or it can be one larger image depicting a scene of action. Feel free to be creative with your comic.

Draw to the best of your ability and have fun with it. Use plenty of details from the book to fill out the scenery and look of the characters. You can take advantage of any dialog from the book to add to your comic.

Once you've finished your comic, write a short paragraph of no less than 100 words describing the scene. Discuss a little about why the scene is important to the story and why you chose to depict it. Use lots of detail and color in your work and have fun with it.



© CLASSROOM COMPLETE PRESS

1A

Animal Farm CC2019

NAME: _____

Student Worksheet



Activity Two

Movie/Book Review

You've completed reading *Animal Farm*, and now you have an opportunity to express your opinions on it. Alternatively, you can choose to watch one of the film adaptations of the book and write a review of that. Either way, this is your chance to have your voice heard.

In a review of no less than 700 words, discuss the book in enough detail to set up the plot, but be careful to stop short of spoiling the ending for those reading your review.

Establish who are the major players from the book and set up the problem that kicks off the plot. Be sure to include details to establish the setting, such as time period and geographical location.

Use your personality and a little bit of humor to make the review as entertaining as possible. You can be as critical or complimentary as you like. Give some examples of things you liked or didn't like about the book or movie and explain why. If you didn't like anything about the book, describe in detail what made you feel that way. A review is meant to give people an idea of whether they should read or watch the book or movie using specific examples and without spoiling anything.

Discuss a favorite moment. If that moment is near the end, or at a critical moment that could be a spoiler, use language that is less definite. For example, instead of using character names, you could describe their role or things about them instead.

Give some details on relevant information like the price (book or movie), length (book or movie), and identify the appropriate reader or viewership (toddler, young adult, etc.).

Come up with your own grading scale, like the ratings that are done for movies and a guide to show what the rating means. Rate the book/movie based on your created scale. Your final paragraph should sum up your thoughts and tell people whether they should see the movie or read the book (or both).

© CLASSROOM COMPLETE PRESS

2A

Animal Farm CC2019

NAME: _____

Student Worksheet



Activity Three

Mapping Manor Farm

The story of *Animal Farm* takes place at a small farmhouse in the English countryside. There's the old farmhouse, the cowshed, and lots of other features you would expect there to be on a working farm.

Go back through the book and make notes about the setting. Identify anything that will help you make a mental image of the farm. Once you have a well-defined mental picture of what you believe the layout would be like, use this information as a jumping off point to create a detailed map of the farm property.

Use a large piece of poster paper to begin making your map. You don't have to establish a defined scale for the map, but try to make structures realistic sizes (i.e. the farmhouse should be larger than a tool shed or other small structure).

Try to fit in as many details about the farm as possible to fill out your map. Mark off any large fields or neighboring properties that are of interest and include things—like the windmill—that are important to the story.

Be creative, but be sure to include lots of color and plenty of detail. Make sure you label any fields, structures, equipment, or other locations on your map clearly.



© CLASSROOM COMPLETE PRESS

3A

Animal Farm CC2019

NAME: _____

Student Worksheet



Activity Four

Research Report

Researching is an important skill for anyone to have. Having the ability to validate information through multiple separate sources is vital to ensuring information is as factual and detailed as possible. More information allows for a more balanced assessment of events and situations and helps improve critical thinking skills.

With that in mind, this activity will have you exercise your researching skills. Start by looking up author George Orwell. What is his background? Where did he grow up? When did he write *Animal Farm*? What world events happening at the time might have influenced Orwell's writing? What connections can be drawn between those world events and *Animal Farm*? Discuss these questions in a paragraph of no less than 100 words.

Animal Farm is known to be an allegory for the Russian Revolution. What is an allegory? Why might Orwell have wanted to portray these events in this way? Discuss these questions in no less than 100 words.

Was there anything controversial about *Animal Farm* in Orwell's time? How was the book received? What were Orwell's thoughts on the story? Why did he feel the book was important to write? Discuss these questions in a paragraph of no less than 100 words.

With *Animal Farm* being an allegory for the Russian Revolution, what was Orwell trying to say with his satirical take? How do his thoughts on *Animal Farm* compare with his thoughts on *1984*? Why might these two novels be compared? Explain your thoughts in no less than 100 words.

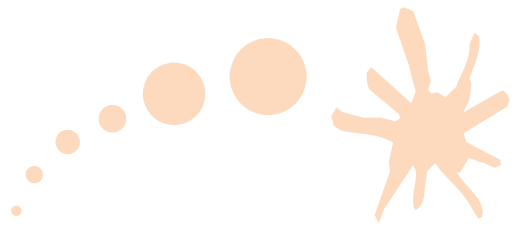
Take everything you've discovered in your research and condense it into a final summary paragraph. This paragraph should explain your overall thoughts on the book, why it might have been an important work at the time, and what its relevance might be today.

© CLASSROOM COMPLETE PRESS

4A

Animal Farm CC2019

NAME: _____



Activity Five

Alternate Ending



At the end of *Animal Farm*, Clover sees that, after all they had been through, it's impossible to tell the difference between pig and human. The seven commandments that held that animals should not embrace the ways of humans and that all animals are equal, have been replaced with additions like "...but some animals are more equal than others."

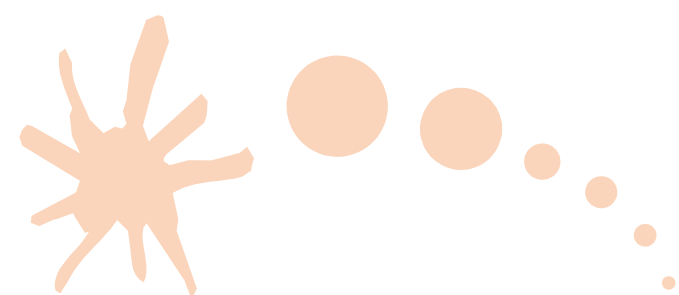
It's an ending that mirrors the pigs' earlier decisions, like in declaring that the extra milk and apples should go directly to them rather than be shared among all the animals. If only some of the other animals had opposed the pigs before they had a tight grasp on power, could things have been different?

In this activity, your task will be to rewrite the ending to your own expectations. You will come up with a new conclusion to the story that will wrap up the plot in a new way. If you weren't happy with how the book ended, now is your chance to change things up.

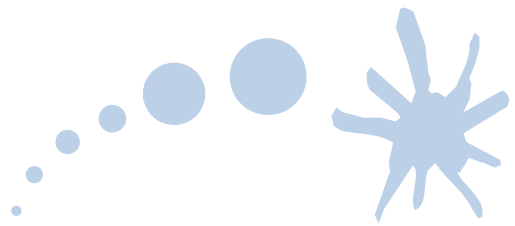
You can choose where you want to start your ending, either before Boxer is taken away or after. It's up to you. Use your imagination to come up with an alternate ending that concludes the story of *Animal Farm* and all of the major characters.

Your alternate ending can include new settings, new characters, or anything else you want.

Your final product should be two typed, double-spaced pages in length. Your ending should comment on what happened to *Animal Farm* and its inhabitants in the years after Boxer's fall.



NAME: _____



Activity Six

Comparing Compositions



Animal Farm features many themes such as class, power, propaganda, control, corruption and inequality. The book ends in a somewhat bleak way with the animals realizing their distrust of humanity mirrored in the hypocrisy of the pigs that now walk on two legs, wear clothes, practice trade, handle money, and kill animals. By the end of the book, the pigs have broken each of the seven commandments established in the days following the initial rebellion.

Consider these ideas. Use either the Internet or another resource to find a novel with similar themes and ideas as those presented in *Animal Farm*. Read that novel and take notes about how the themes are utilized or implemented throughout the plot. Take these notes and consider how they compare to how those same themes are utilized in *Animal Farm*.

Write a paragraph that summarizes the events of your chosen novel. In a few paragraphs, compare and contrast your chosen novel's themes and plot with those of *Animal Farm*. Are they similar? How? Are they different? In what ways? What impact do these themes have within their respective stories?

How do the authors' styles differ? How are they similar? How does writing style affect the tone of the story? Do the themes affect you differently based on writing style? Which author do you believe did a better job conveying these themes? Why?

Answer each of these questions in a few paragraphs. Your finished product should be no less than 500 words. Be sure to use plenty of detail and examples from the stories to back up your opinions.

