



**Drag the correct word from the list to complete the sentence.**

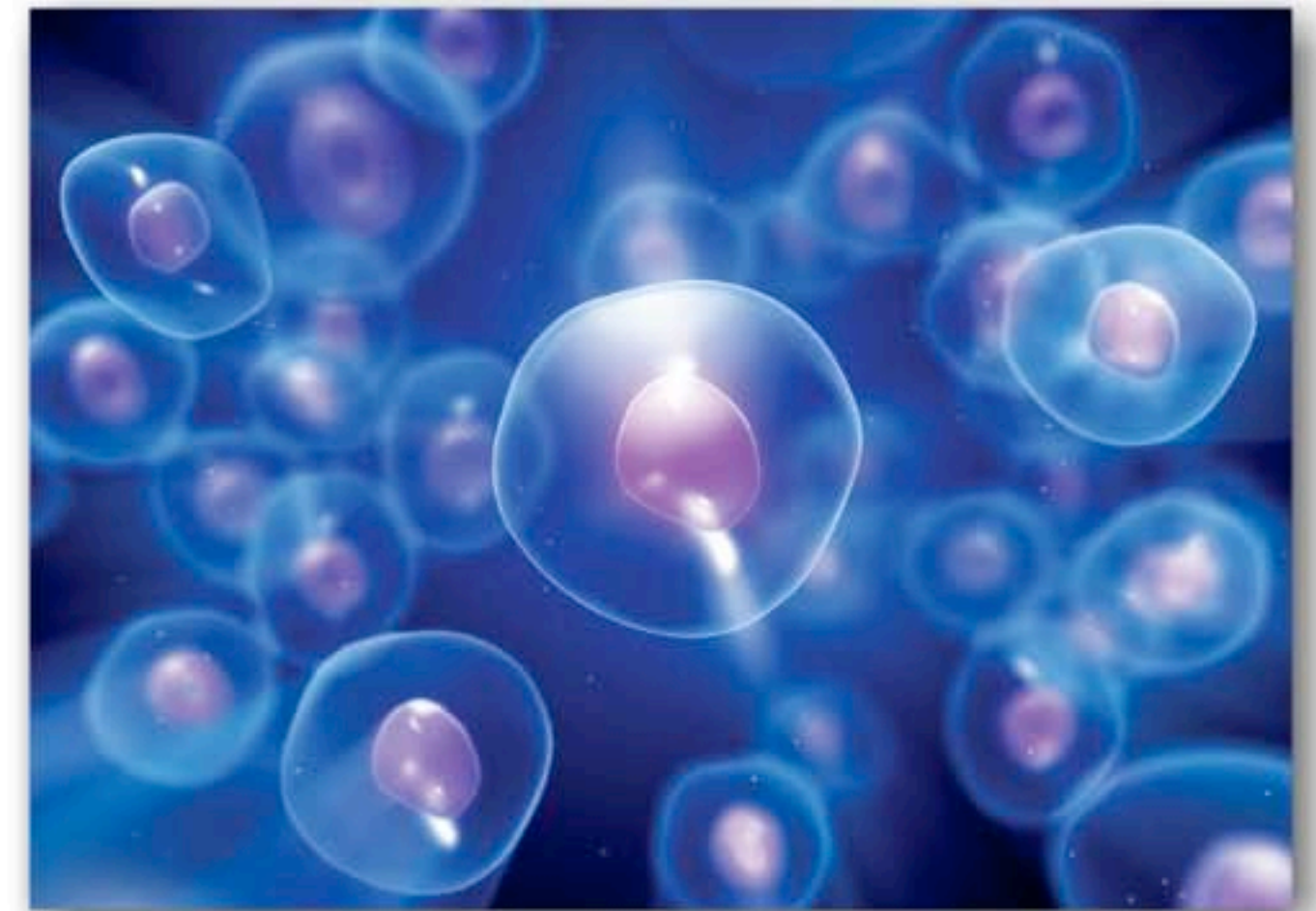
**DNA**

- a) The liquid inside a cell is called **cytoplasm**.
- b) One of the most important parts of a cell is called the **nucleus** because it controls everything the cell does.
- c) The nucleus contains special information called \_\_\_\_\_ . This hereditary information helps the cell to reproduce itself.





Cells are many different shapes. They can be long like sticks, round like balloons or rectangular like building blocks. Cells are like a factory because they have many parts that work together to get important work done. In the chart below, we use the idea of a factory to help you remember the main parts and what they do.



Cell Part	Where Is It?	What It Does	Job in the Factory
<b>Cell</b>	Surrounds the	- Separates the	<b>continue reading</b>



# Parts of a Cell

Cell Membrane

Mitochondria



Lysosomes

Nucleus

Cytoplasm

(label)

Separates the inside of the cell from its environment.

(label)

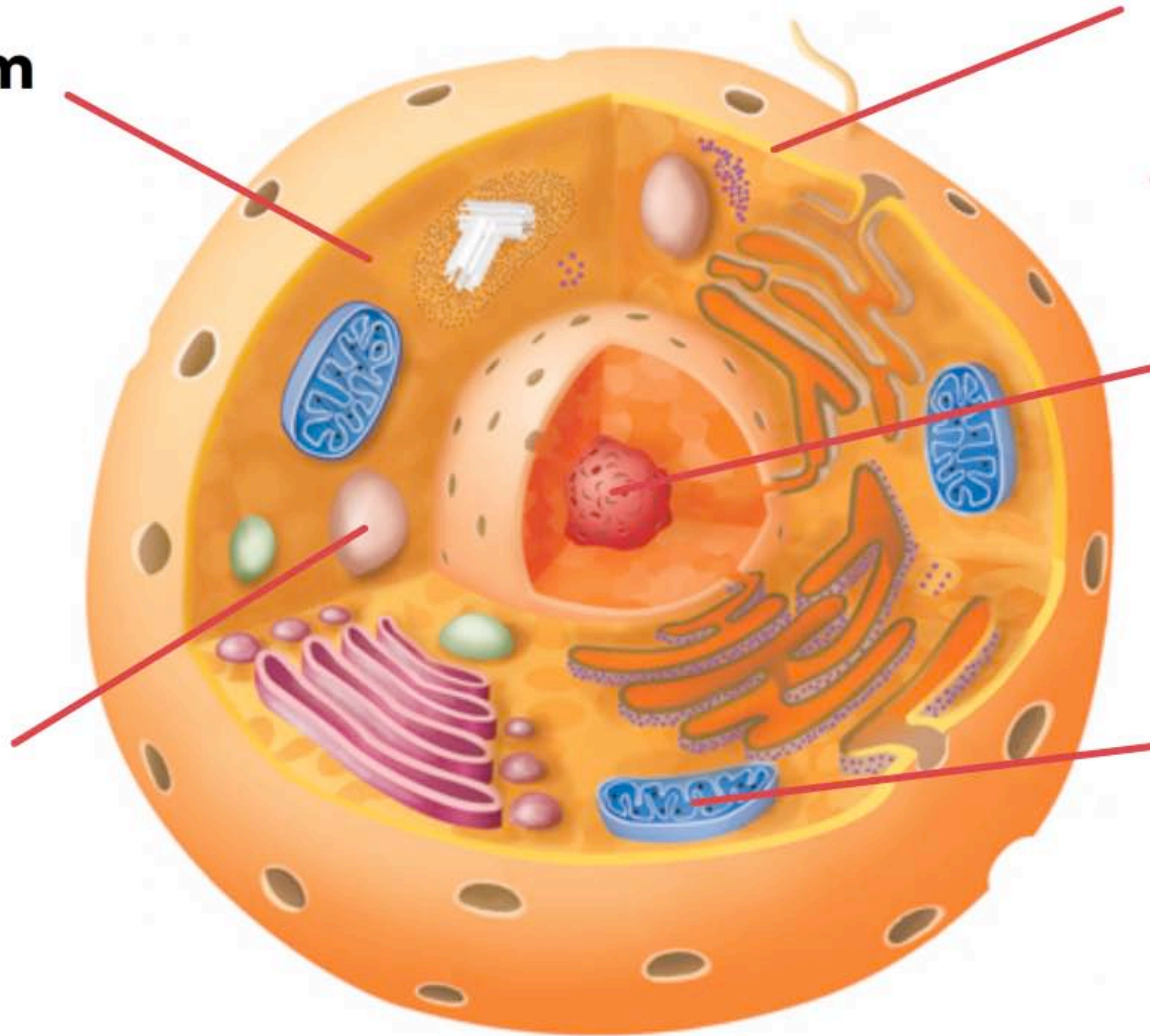
(hint)

(label)

(hint)

(label)

(hint)



Reset