

Parts of the Ear

Eardrum

Stirrup,
Hammer
and Anvil

Cochlea

Nerve Cells

Ear Canal

Outer Ear



Three small bones that vibrate when sound passes by.



Instructions

Close X

Label the different parts of the ear by dragging the words from the list to their matching functions.

(label)

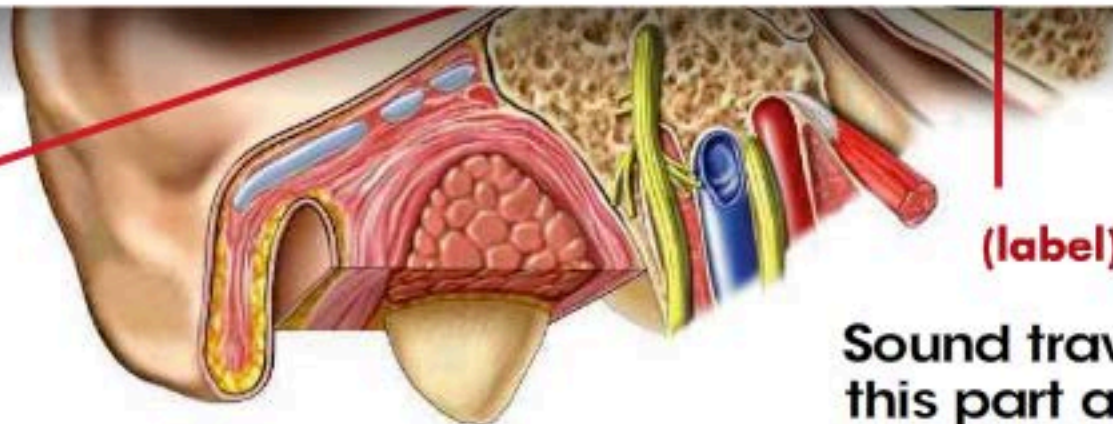
Sound travels down this part to the eardrum.

(label)

Sound is turned into electrical signals and sent to the brain.

(label)

This part increases the power of the sound.



Inner Ear

Sound travels into this part and over the nerve cells.



Reset

Parts of the Ear



Cochlea

Nerve Cells



Outer Ear

**Stirrup,
Hammer
and Anvil**

Three small bones
that vibrate when
sound passes by.

Ear Canal

Sound travels
down this part
to the eardrum.

(label)

Sound is turned
into electrical
signals and sent
to the brain.

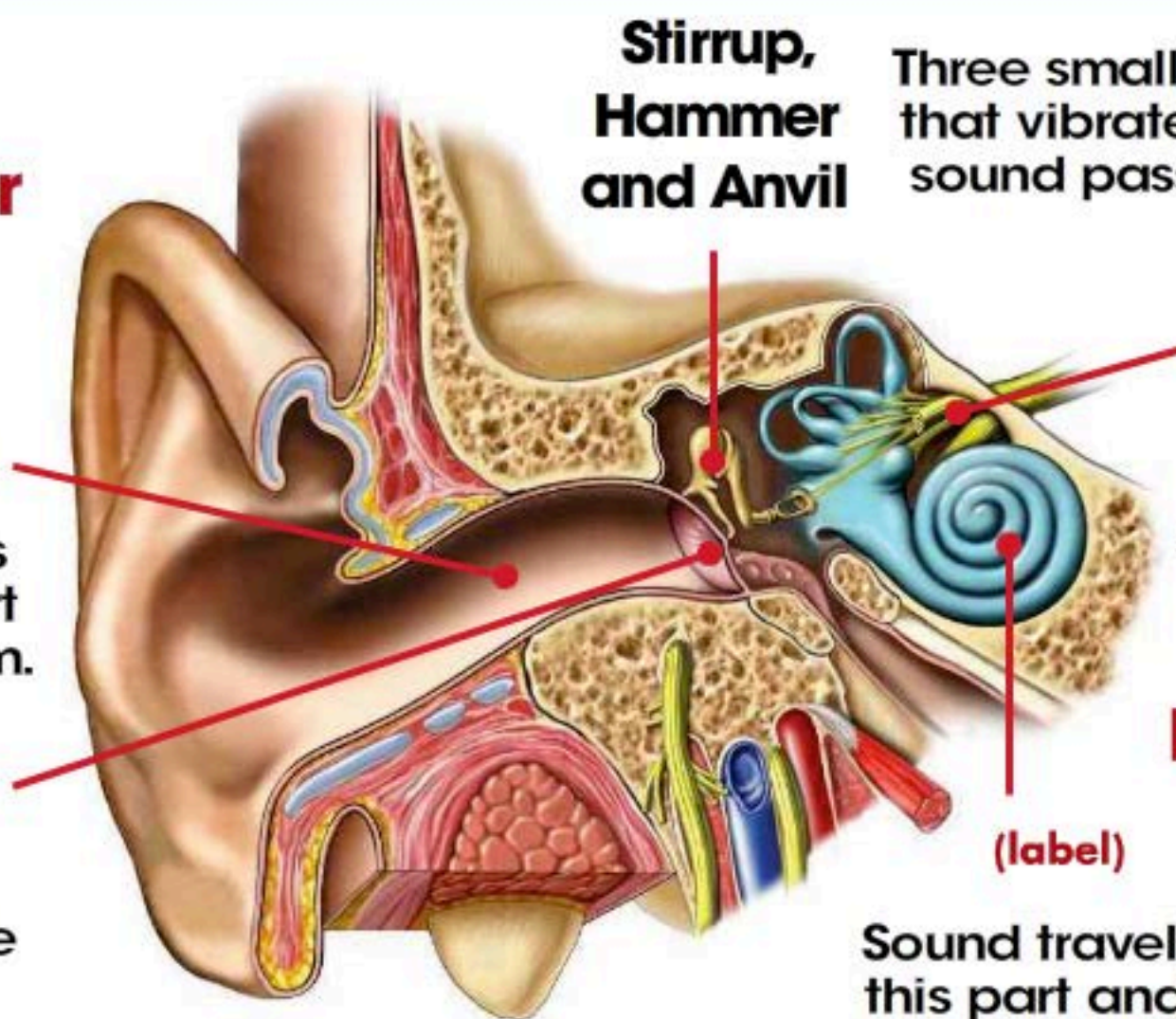
Eardrum

This part
increases the
power of
the sound.

Inner Ear

(label)

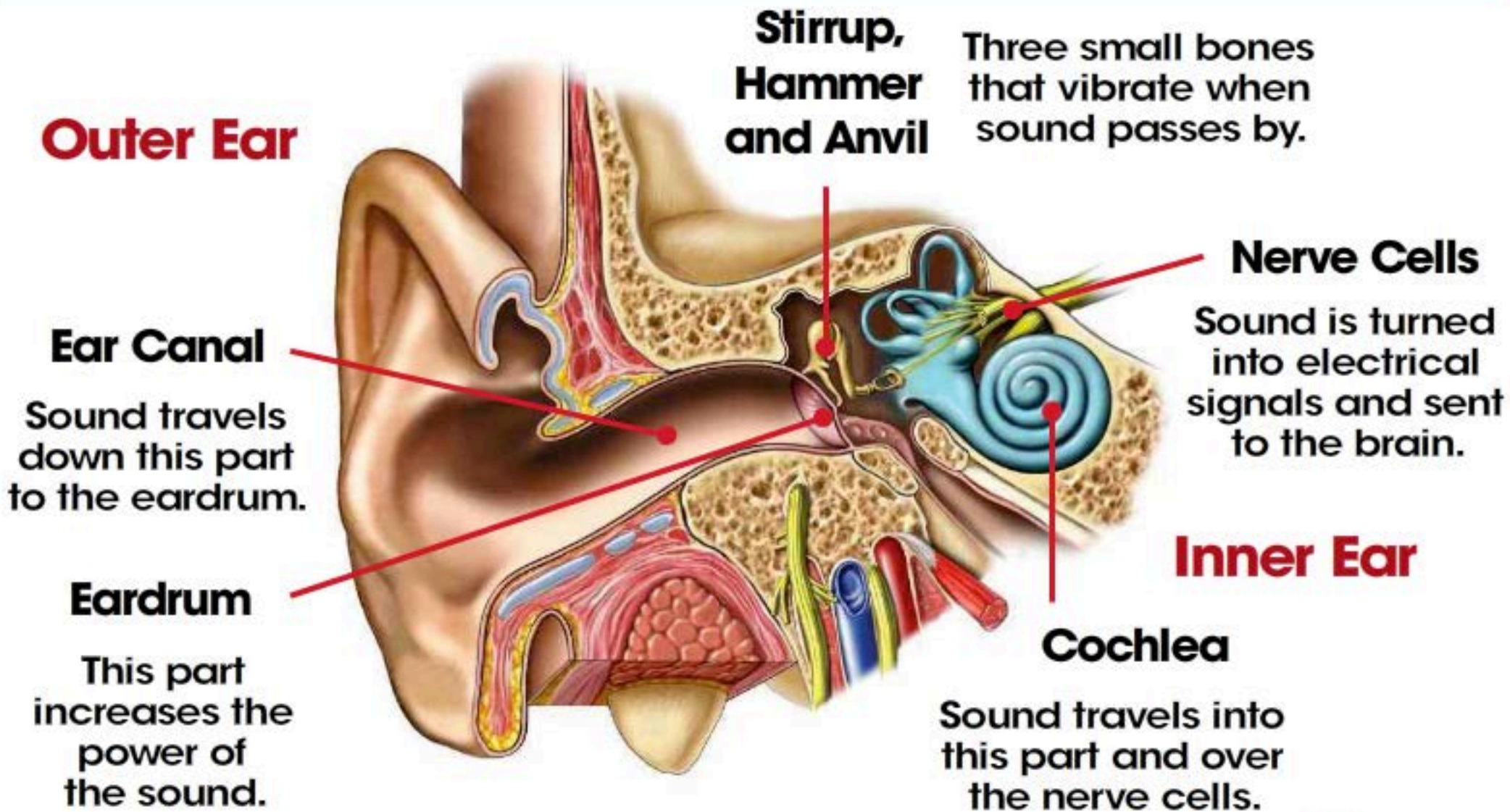
Sound travels into
this part and over
the nerve cells.



Reset

Parts of the Ear

WELL DONE!



Reset