



Drag the correct word to its definition below.

pancreas

water

enzymes

a) Chemicals that help digestion.

waste

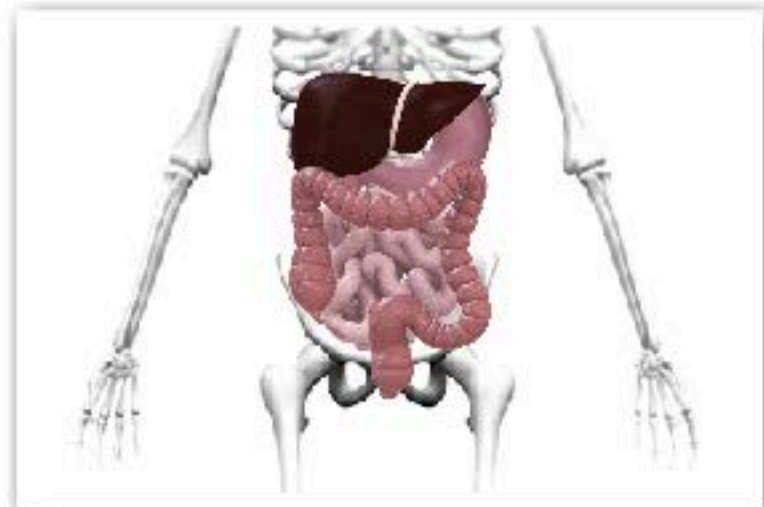
b) The material that our body cannot use.

c) One of the organs that makes enzymes.

d) Removed in the large intestine.



After several hours in the stomach, food is only partly digested. Next, it moves into the small intestine. The small intestine gets its name because it is a tube that is small around (small in diameter). But the small intestine is also very long. It is close to twenty-five feet long! It fits in our body because it is very tightly **coiled** (like a curled up snake that is sleeping).

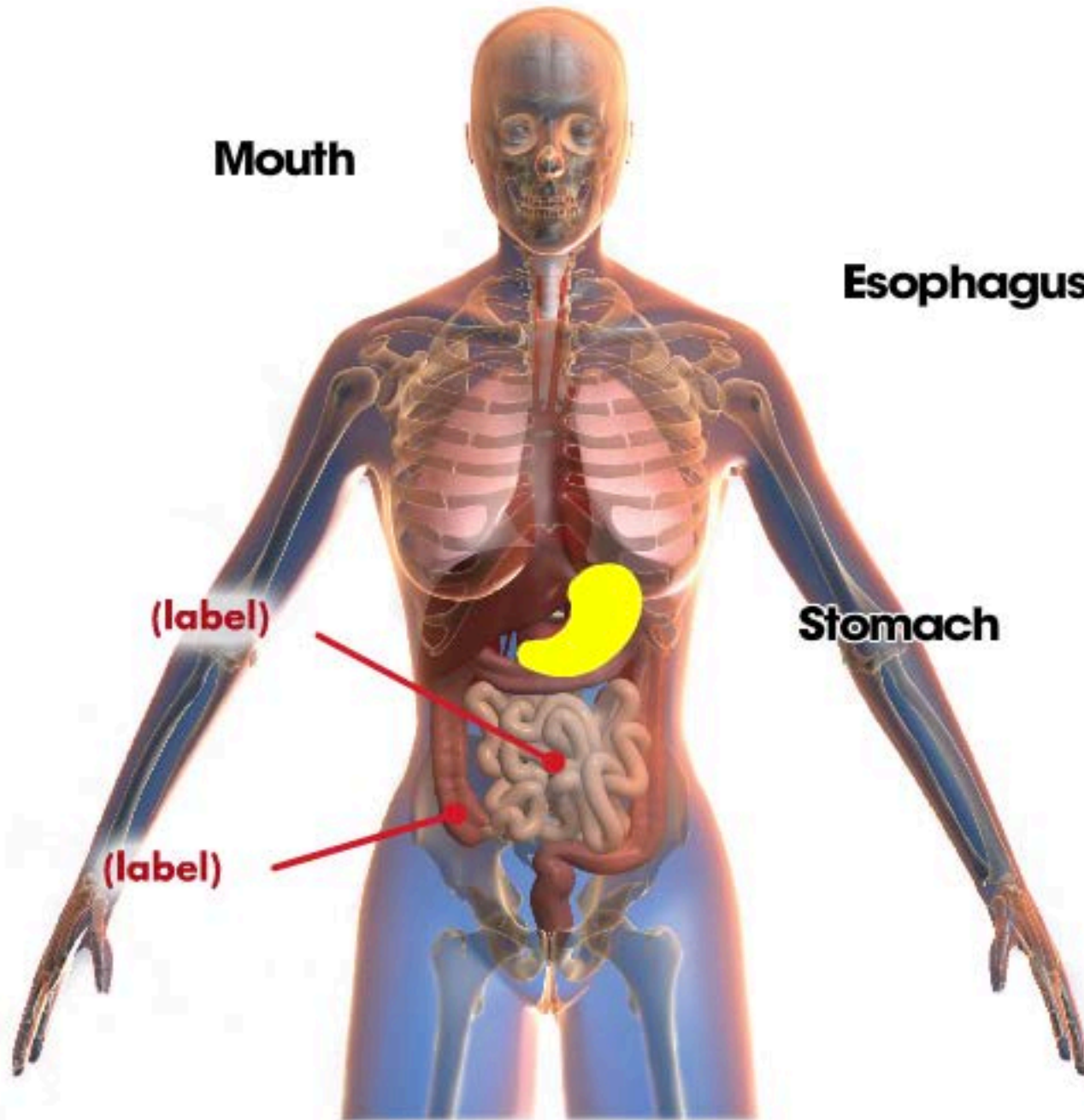


The Small Intestine

Chemicals, called **enzymes**, enter the small intestine to help digestion even more. These enzymes come from two important organs — the liver and the **pancreas**.

continue reading 

Food Digestion Cycle



Small
Intestine

Large
Intestine



Reset