



Drag the correct word to its definition below.

colon

abdomen

particle

moisture

a) Damp or slightly wet.

urine

b) The main liquid waste from our body.

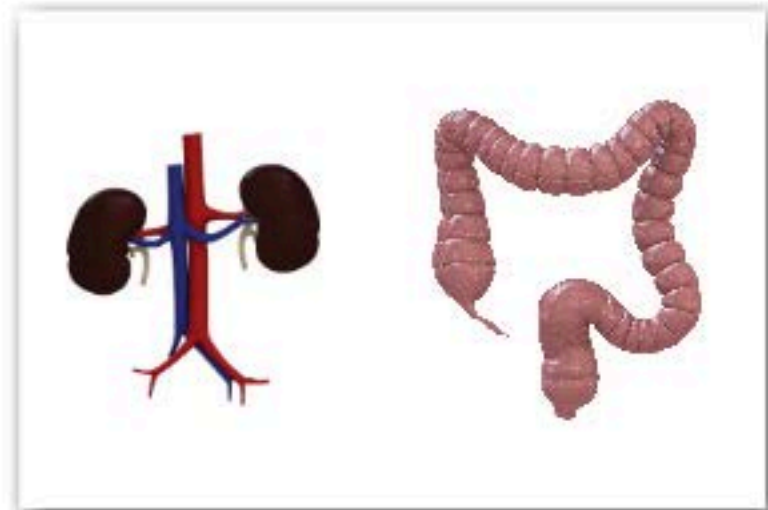
c) A tiny piece or bit.

d) Another name for the large intestine.

e) The middle part of our body.



The most important excretory organs in the body are the **kidneys** and the large intestine. We have two kidneys. They are small, dark red organs each about four inches long. If you have ever seen a kidney bean, you know the shape and color of your kidneys. Each kidney is located in the lower back on either side of our spine.



The large intestine is also called the **colon**. It is about five feet long. It is in the lower **abdomen**. Its shape is that of an up-side-down "U". Let's look at the chart below to learn more about these two important organs.

Excretory System Memory Match Game

Skin

Liver

Lungs

Kidneys

Large Intestine

Bladder

Liver

?

?

?

Bladder

Large Intestine



?



?

?



Mix

Reset

?