



What is sea level?

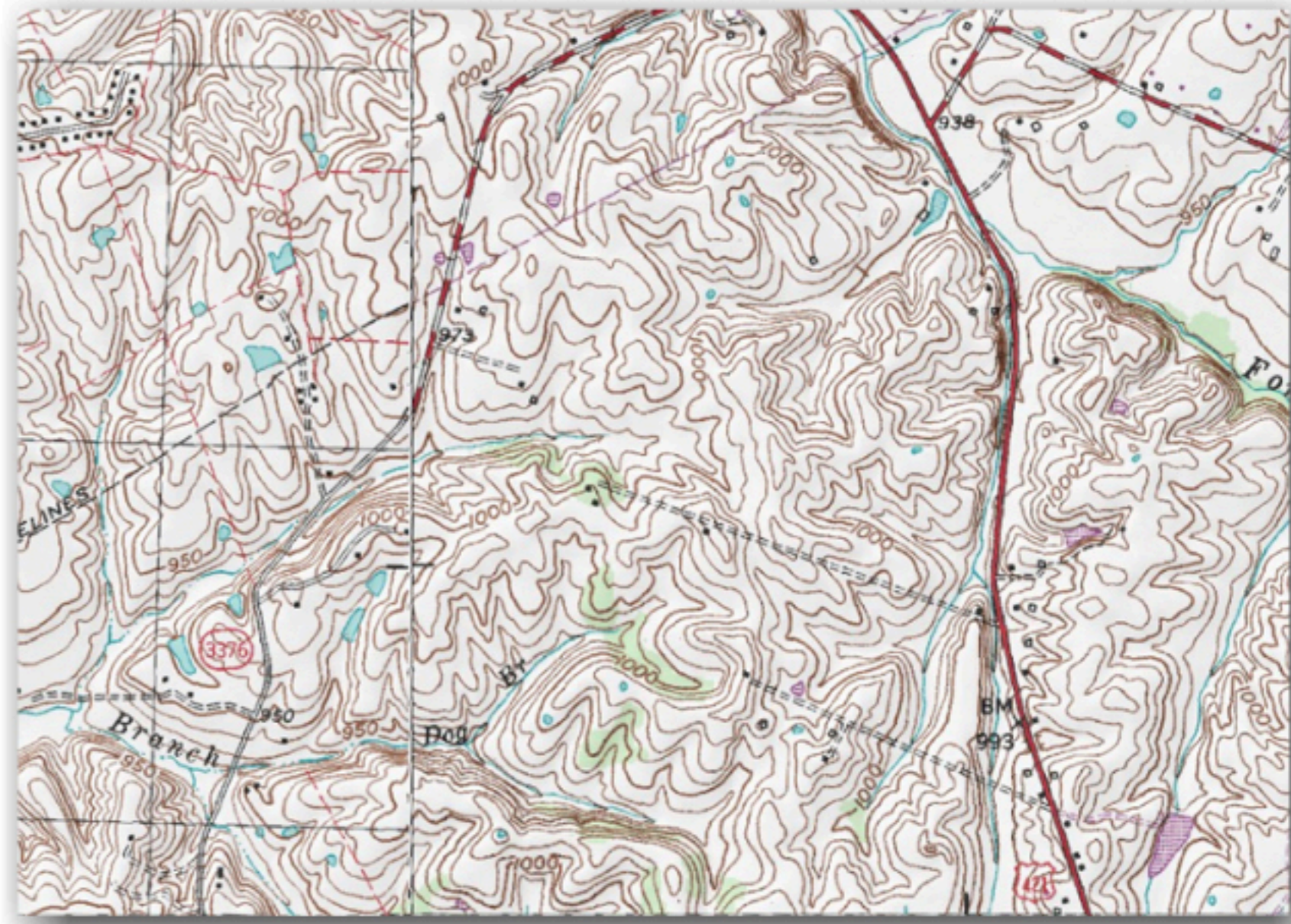


- A)** The distance you can see.
- B)** The height of the sea at low tide.
- C)** The height of the sea at high tide.
- D)** The height that is the halfway point between high and low tides.

WELL DONE!



Topographic maps show differences in **elevation** or height. They are either black or brown in color. The lines, or **contour lines**, connect points of land that are the same height. When the lines are close together, the land is **steep**. When the topographic lines are far apart, the area has a gradual incline. Elevation begins at **sea level**, which is the height of the sea in between high and low tides.



(touch the image to enlarge)



(touch the image to enlarge)

END





Which statements are True and which statements are False?

TRUE / FALSE

A) Sea level is the height of the sea at low tide.

TRUE / FALSE



B) When contour lines are close together, the land is steep.

TRUE / FALSE



C) Buildings and roads on a map are usually colored black.



Open Discussion:

In which cases would political maps be better than topographic maps?