




A scale is:



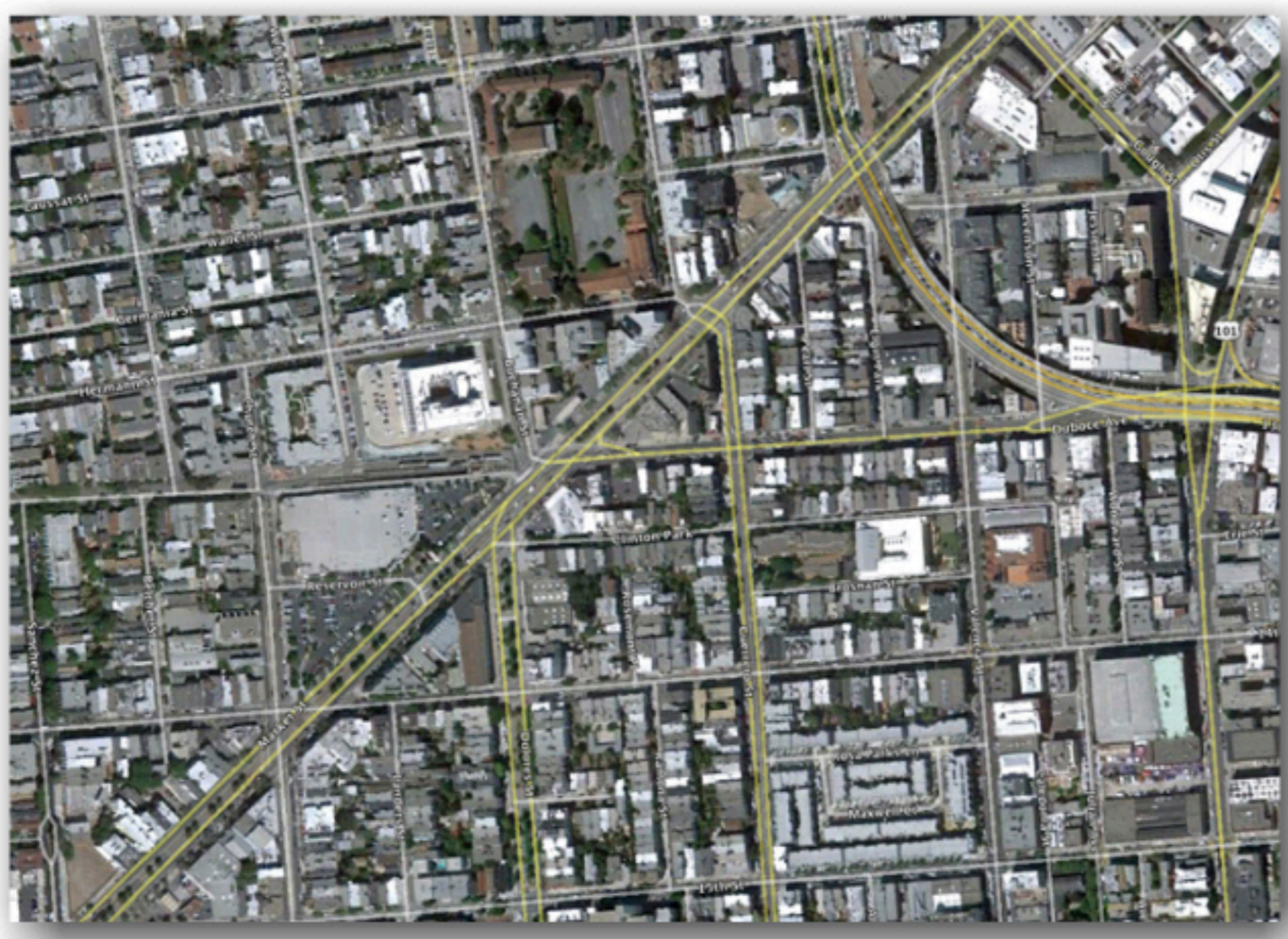
- A) a table that explains pictures on a map.
- B) drawings on a map, which represent something on the ground.
- C) a series of lines, horizontal and vertical, placed over a map.
-  D) a tool, which explains distance.

WELL DONE!



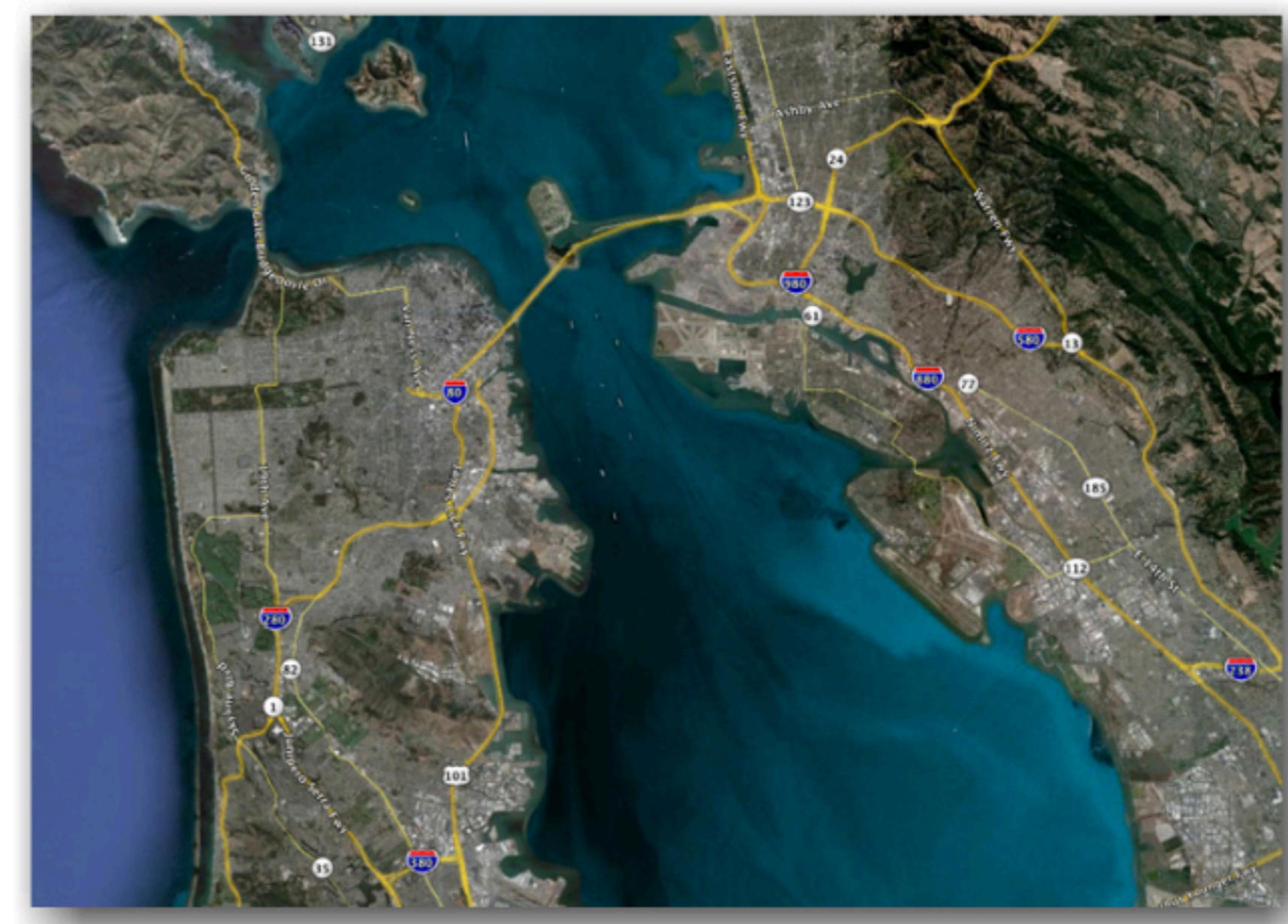
ES

The **scale** of the map tells us how much the area has been reduced. For example, 1 inch/1 cm = 1 mile/1 km means that 1 inch/1 cm on the map equals 1 mile/1 km on the ground. Sometimes the map simply uses a ratio to express the relationship. For example, a scale may read 1:1000, which means 1 inch/1 cm would equal 1000 inches/1000 cm, or 1 mile/1 km. The scale on a map allows you to measure distances between places. It also determines how much of an area you can see. Look at the following examples of maps below:



(touch the image to enlarge)

(continue)

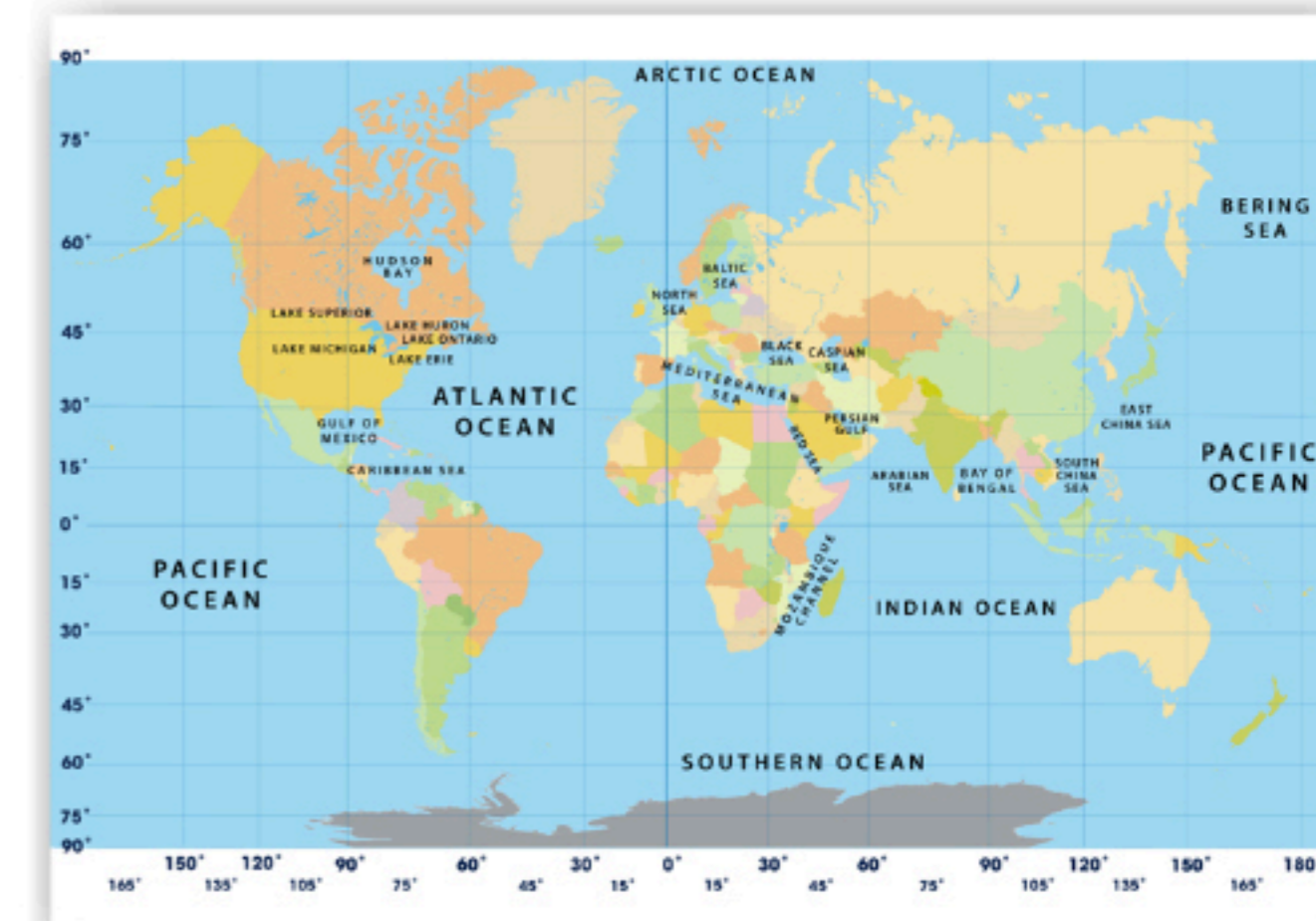


(touch the image to enlarge)

Reset



Touch the body of water that is found at the following coordinates. Answer by using the provided image.



(touch the image to enlarge)

a) 47.7°N, 87.5°W

Red Sea

Lake Superior

Arctic Ocean

b) 0°S, 160°W

Pacific Ocean

Persian Gulf

China Sea

c) 25.15°N, 90.03°W

Caspian Sea

Gulf of Mexico

North Sea