

# NCTM Content Standards Assessment Rubric



## Algebra

Student's Name: \_\_\_\_\_ Assignment: \_\_\_\_\_ Level: \_\_\_\_\_

	Level 1	Level 2	Level 3	Level 4
<p><b>Understanding the Algebraic Concepts: Sorting, Patterning, Graphing, Equations and Quantitative Change</b></p>	<ul style="list-style-type: none"> <li>Demonstrates a limited understanding of Sorting, Patterning, Graphing, Equations and Quantitative Change</li> </ul>	<ul style="list-style-type: none"> <li>Demonstrates a basic understanding of Sorting, Patterning, Graphing, Equations and Quantitative Change</li> </ul>	<ul style="list-style-type: none"> <li>Demonstrates a good understanding of Sorting, Patterning, Graphing, Equations and Quantitative Change</li> </ul>	<ul style="list-style-type: none"> <li>Demonstrates a thorough understanding of Sorting, Patterning, Graphing, Equations and Quantitative Change</li> </ul>
<p><b>Applying Appropriate Technique, Tools, and Formulas to Solve Algebraic Problems</b></p>	<ul style="list-style-type: none"> <li>Demonstrates limited ability in using formulas to solve algebraic equations</li> </ul>	<ul style="list-style-type: none"> <li>Demonstrates some ability in using formulas to solve algebraic equations</li> </ul>	<ul style="list-style-type: none"> <li>Demonstrates satisfactory ability in using formulas to solve algebraic equations</li> </ul>	<ul style="list-style-type: none"> <li>Demonstrates strong ability in using formulas to solve algebraic equations</li> </ul>

SAMPLE

**NEXT STEPS:**

**WEAKNESSES:**

**STRENGTHS:**

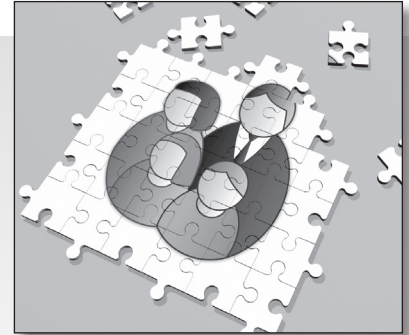


# Task Sheet 5

5a) The two number sentences below belong to a *fact family*.

$$4 + 3 = 7$$

$$7 - 4 = 3$$



Circle the following pairs of number sentences which belong to the same fact family.

(Hint: there may be more than one.)

i)  $8 + 3 = 11$

$11 - 8 = 3$

ii)  $2 + 7 = 9$

$9 - 1 = 8$

iii)  $7 + 8 = 15$

$15 - 8 = 7$

iv)  $9 + 5 = 3$

$6 + 7 = 13$

SAMPLE

b) Complete the following skip counting chart by filling in the missing numbers.

7	9		13			19	21			27
---	---	--	----	--	--	----	----	--	--	----

c) Look at the following number sentence.

$$36 - 18 = 9 + \square$$

Which number should be placed in the box to complete the number sentence correctly?

Answer: \_\_\_\_\_



## Drill Sheet 2

a) This is part of the hundreds chart with some numbers missing.

27	28		
		39	
	○		50
57		59	

Which number belongs in the circle?

- i) 29      ii) 38      iii) 48      iv) 60

b) Which number is missing from this pattern?

12, 15, \_\_\_\_, 21, 24

- i) 18      ii) 20      iii) 16      iv) 17

c) Which equation below is correct?

i)  $6 + 10 = 6 + 5 + 0$

ii)  $6 + 10 = 6 + 5 + 10$

iii)  $6 + 10 = 6 + 6 + 5$

iv)  $6 + 10 = 6 + 5 + 5$

d) Circle the odd numbers from the list below.

9      8      10      11      3      15

e) Circle the even numbers from the list below.

7      4      9      20      12      1

# Input-Output Table, Sequencing



- a) This is an input-output table. An input-output table follows certain rules.

Input	Output



Rule: \_\_\_\_\_

- b) Justin goes for a walk. He starts at the \_\_\_\_\_ and walks \_\_\_\_\_ squares up and \_\_\_\_\_ squares left and arrives \_\_\_\_\_.



Use the above grid to help you describe how Justin would walk home.