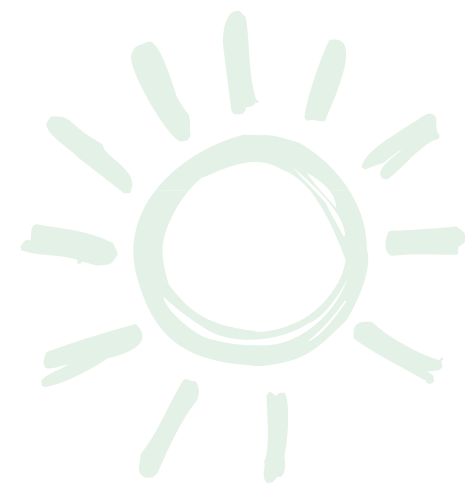




Contents



TEACHER GUIDE

- Assessment Rubric 4
- How Is Our Resource Organized? 5
- STEAM & Next Generation Science..... 6
- Vocabulary 6



STUDENT HANDOUTS

• Reading Comprehension

- 1. *Ecosystems* 7
- 2. *Food and Energy* 7
- 3. *Food Chains* 7
- 4. *Adaptations* 7
- 5. *Life Cycle* 7
- 6. *The Brain* 7

- Hands-on Experiments 13
- Crossword 19
- Word Search 20
- Comprehension Quiz 21



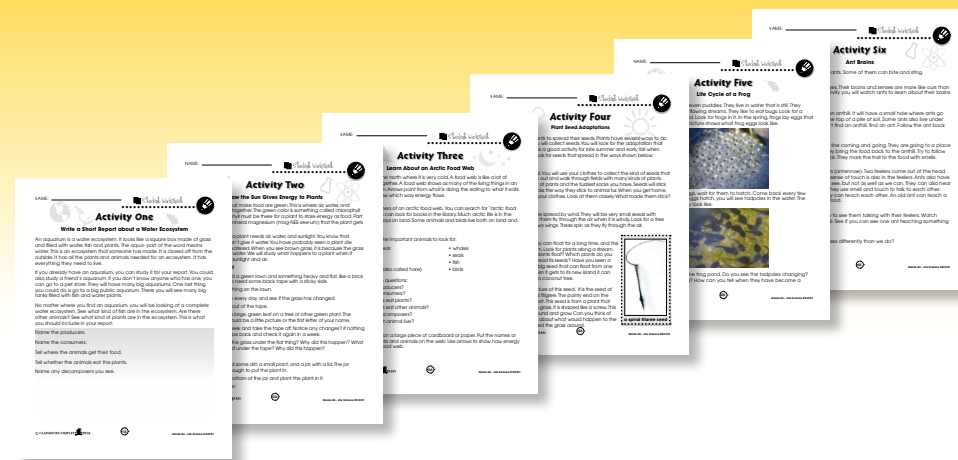
EASY-MARKING™ ANSWER KEY 23

COLOR MINI POSTERS 25

✓ **6 BONUS Activity Pages!** Additional worksheets for your students

- Go to our website:
www.classroomcompletepress.com/bonus
- Enter item CC4101
- Enter pass code CC4101D

FREE!





Life Cycle

1. Put a check mark (✓) next to the answer that is the most right.

a) What is a life cycle?

- A Something you can ride on.
- B Like a food chain without decomposers.
- C The stages in the life of a plant or animal.
- D A survival trait that helps an animal live longer.

b) Frogs were once _____.

- A caterpillars
- B insects
- C seeds
- D tadpoles

c) All of these were hatched from eggs, except _____.

- A ant
- B bird
- C fish
- D mouse

2. Circle **T** if the sentence is True or **F** if it is False.

- T F a) An egg is a stage in the life cycle of a fish.
- T F b) A caterpillar is a stage in the life cycle of a frog.
- T F c) When a cat has kittens, all the kittens are exactly alike.
- T F d) Most plants grow from seeds.



Life Cycle

As you grow older, are you moving in a straight line? Could you be moving in a circle? The term "life cycle" means the circle that a living thing travels. But why a circle? People are all born as babies. They slowly grow up and then have babies of their own. So life repeats. It is a new person each time, but the path of their life is the same. When something repeats, we see it as a circle.



The life of a butterfly.

All plants and animals have life cycles. Life cycles of some things have more changes than our life cycle. As we grow, we just get bigger. We don't look too different. Some living things look very different. Butterflies change very much. The picture shows how they go from an egg to a caterpillar to a pupa to a butterfly. The caterpillar changes to a pupa that lives in a chrysalis. This is a case that goes around the caterpillar while it makes its change. That is a big change—from a crawling worm to a flying butterfly. In the last stage, the butterfly lays eggs, and the cycle starts again.

STOP What are the stages in the life cycle of a butterfly? Put the stages in the order they happen.

Most furry animals (like dogs, mice and bears) have a life cycle like ours. The babies look like small grown-ups. Many other animals start life outside the mother as an egg. The baby comes when the egg hatches. Baby birds, baby reptiles, and baby fish all start as eggs. When the eggs hatch, the babies look like small adults. Actually, most animals start as an egg. For people and furry animals, the egg changes to a baby inside the mother before it is born.



Life Cycle

1. Below are five stages in the life cycle of a plant. Put them in order from first to last. Write the numbers 1, 2, 3, 4, or 5 beside each change. The first stage has been done for you.



- a) young plant
- 1 b) seed
- c) fruit
- d) flower
- e) grown plant

2. Put a check mark (✓) next to the answer that is the most right.

a) Egg is the first stage in the life cycle of a butterfly. Which is the pupa stage?

- A second
- B third
- C fourth
- D fifth

b) Which shows the stages in the life cycle of a frog in the right order?

- A egg, frog, tadpole
- B tadpole, egg, frog
- C egg, tadpole, frog
- D frog, tadpole, egg

c) In the life cycle of a plant, which stage comes just before the fruit stage?

- A seed
- B flower
- C grown plant
- D young plant



Life Cycle

3. Answer the questions in full sentences.

a) Tell about the life cycle of a butterfly. Start with egg.

b) Tell about the life cycle of a plant. Start with seed.

Extension & Application

4. Look outside for a place where ants live. It might be a little hill of dirt or just a hole in the ground. Look at the ants. What stage or stages of the life cycle do you see? Don't touch the ant hill. That would be mean.

Now go on the internet and find the life cycle of an ant. Notice an ant has a life cycle a lot like a butterfly. The stage that is called caterpillar in butterflies is called larva in ants.

Look at the graphic organizer on page 12. All the stages in the life cycle of an ant are shown. Write the name of each stage next to its matching picture.

The Life Cycle of a Butterfly

Study the life cycle of a butterfly.

This is what you will need:
A butterfly chrysalis or a caterpillar.

This is what you do:

- Buy or find a butterfly chrysalis or caterpillar.
- If you find a chrysalis hanging from a tree, don't pull it off. Cut the twig off and bring it home. Bring some leaves from the tree home too.
- Put it in a jar with holes in the lid. Put the leaves in too.
- Do the same if you find a caterpillar. Bring leaves and a twig and put them all in a jar with holes in the lid.
- Watch every day for changes. Take a picture every day to show each change.
- If you can't find a chrysalis or caterpillar, you can buy one. They are not expensive. You might find them at a pet store or hobby store. You can also buy them online.



This is a chrysalis.

If you have a caterpillar, watch for it to change into a chrysalis. If you have a chrysalis, watch for changes. It will start to change just before the butterfly comes out. Don't miss this. It is fun to watch how the wings change. Take the lid off the jar now. Take the jar outside so the butterfly can fly away when its wings are ready.

What stages in the life cycle of a butterfly did you see? Which stages did you miss?

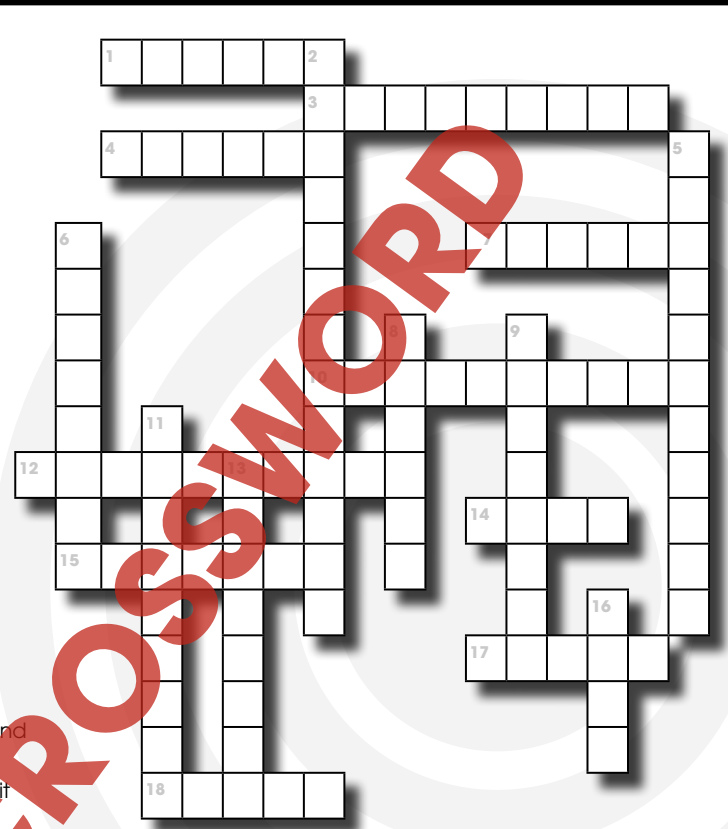
Crossword Puzzle!

Across

- Bees spread it from plant to plant.
- A group of plants and animals working and living together.
- The stuff things are made of.
- What you become when you turn to stone.
- Your nose is one.
- It brings nutrients back to the ground.
- What is inside a chrysalis.
- Future frog.
- Something you can pass on to your babies.
- It sends messages to and from your brain.

Down

- It is made up of your brain and your nerves.
- Plants need it, and bees do it for them.
- Decomposers take it back to the ground.
- Plants get it from the Sun.
- It eats producers.
- Where energy is passed from consumer to producer.
- It stores food energy.
- Egg, tadpole, frog, egg. This is the _____ cycle of a frog.



Word List

consumer	life	pollen
decomposer	matter	producer
ecosystem	nerve	pupa
energy	nervous system	sense organ
food chain	nutrient	tadpole
fossil	pollination	trait

Comprehension Quiz

Part A

Circle **T** if the sentence is TRUE or **F** if it is FALSE.

- T F 1) Fossils can be brought back to life.
- T F 2) People are part of an ecosystem.
- T F 3) Almost all ecosystems get their energy from the Sun.
- T F 4) Producers eat consumers.
- T F 5) A survival trait is an adaptation that helps a plant or animal live.
- T F 6) A pupa is a stage in the life cycle of a frog.
- T F 7) The tongue is a sense organ.

Part B

Put a check mark (✓) next to the answer that is the most right.

a) Which tells what an ecosystem is?

- A A part of the body that helps an animal live.
- B An animal that gives back nutrients to the ground.
- C What's left of a plant that has turned to stone.
- D A group of plants and animals that live together.

b) A boy is walking in the woods and sees a bear. He decides to run away from it. To which body part does his brain send a message?

- A bones
- B eyes
- C muscles
- D skin

SUBTOTAL: /9

Pond Ecosystem





Life Cycle

1. Below are five stages in the life cycle of a plant. Put them in order from first to last. Write the numbers 1, 2, 3, 4, or 5 beside each change. The first stage has been done for you.



a) young plant



1 b) seed



c) fruit



d) flower



e) grown plant

2. Put a check mark (✓) next to the answer that is the most right.

a) Egg is the first stage in the life cycle of a butterfly. Which is the pupa stage?

- A second
- B third
- C fourth
- D fifth

b) Which shows the stages in the life cycle of a frog in the right order?

- A egg, frog, tadpole
- B tadpole, egg, frog
- C egg, tadpole, frog
- D frog, tadpole, egg

c) In the life cycle of a plant, which stage comes just before the fruit stage?

- A seed
- B flower
- C grown plant
- D young plant

1.

- a) 2
- b) 1
- c) 5
- d) 4
- e) 3

2.

- a) B

3.

a) The egg hatches to become a caterpillar. The caterpillar becomes a pupa in a chrysalis. When it comes out, it is a butterfly.

b) A seed sprouts to become a young plant. The plant grows up and has flowers. Fruit grows when the flowers fall off. The fruit has seeds inside.

4.



Ant Egg



Ant Larva



Ant Pupa



Grown Ant

- b) C

- c) B

10

11

EASY MARKING ANSWER KEY

