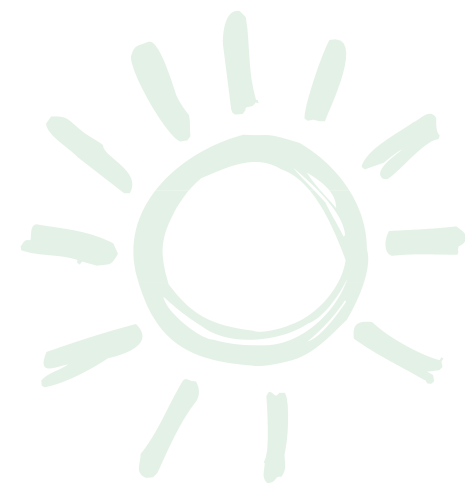




Contents



TEACHER GUIDE

- Assessment Rubric 4
- How Is Our Resource Organized? 5
- STEAM & Next Generation Science..... 6
- Vocabulary 6



STUDENT HANDOUTS

- Reading Comprehension
 - 1. *Weather* 7
 - 2. *Seasons* 7
 - 3. *Air and Water* 7
 - 4. *Rocks and Minerals* 7
 - 5. *Humans and the Environment* 7
 - 6. *Solar System* 7
- Hands-on Experiments 13
- Crossword 19
- Word Search 20
- Comprehension Quiz 21



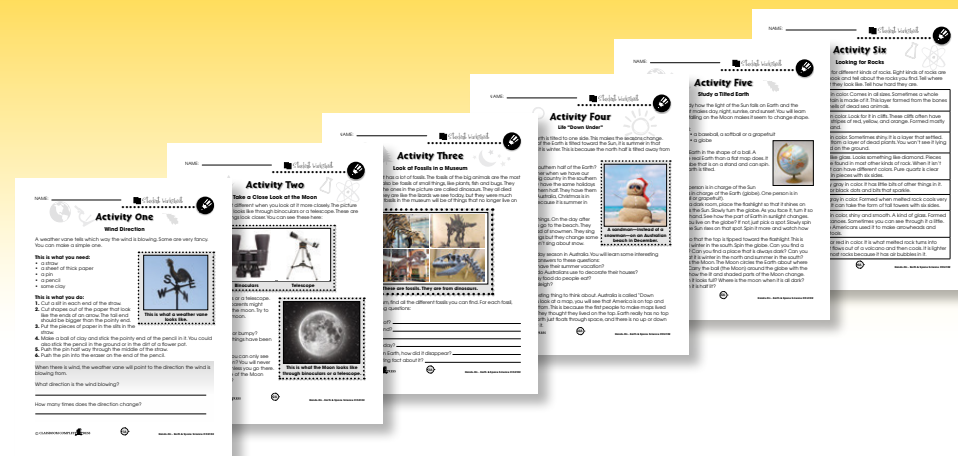
EASY-MARKING™ ANSWER KEY 23

COLOR MINI POSTERS 25

✓ **6 BONUS Activity Pages!** Additional worksheets for your students

FREE!

- Go to our website:
www.classroomcompletepress.com/bonus
- Enter item CC4102
- Enter pass code CC4102D





Seasons

1. Circle **T** if the sentence is True or **F** if it is False.

- T F a) Weather is the same as climate.
 T F b) It is cold at the equator.
 T F c) Earth is tipped sideways.
 T F d) Fall is before winter.
 T F e) Seasons happen at the same time all over the world.

2. Put a check mark (✓) next to the answer that is the most right.

a) How many seasons are there in all?

- A one
 B two
 C three
 D four

b) Which is the coldest season?

- A winter
 B spring
 C summer
 D fall

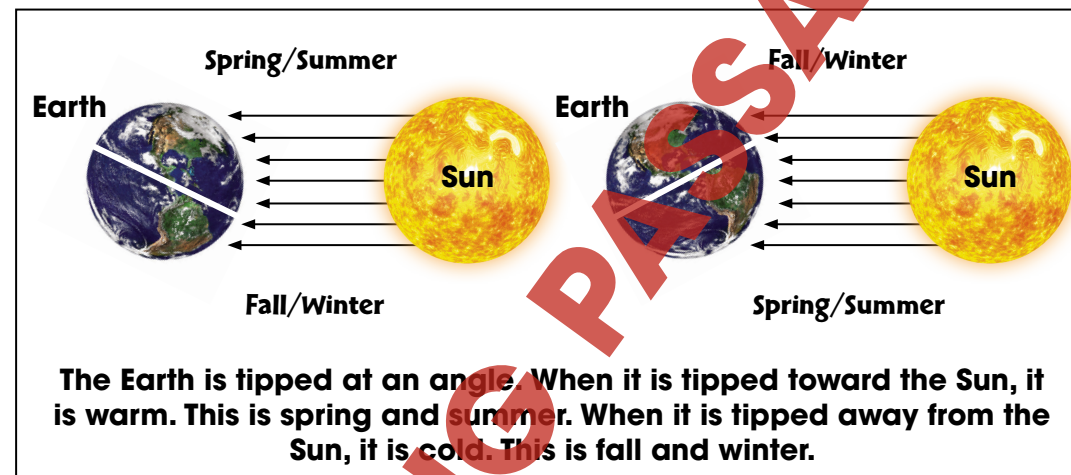
c) Which shows the right order?

- A Summer comes after fall.
 B Winter comes before fall.
 C Winter comes before spring.
 D Spring comes after summer.



Seasons

Why do we have seasons? Because of the Sun. Seasons depend on the changing amount of sunlight. When there's lots of sun, you get warm seasons. When there's not a lot of sun, you get cold seasons. You learned that days are longer in the summer and shorter in the winter. But why are days longer? The pictures below help explain this.



The line around the middle of Earth is called the **equator**. The part above this line is called the north half of Earth. The part below this line is called the south half. If you live in the north half, you are tipped toward the Sun in the summer and away from the Sun in the winter. When your half is tipped toward the Sun, sunlight hits you more straight on. This makes things warmer. The tipping also makes the days longer in the summer. This also makes it warmer. The tipping also explains why the north half is colder in the winter.

The picture on the left shows how the Earth is tipped for one half of the year. The picture on the right shows how the Earth is tipped the other half of the year. The time between the middle of winter and the middle of summer is one half year. But what if you lived in the bottom half? Then you would be having winter when the top half is having summer. You can tell this by looking at the picture.



Seasons

1. Circle **T** if the sentence is True or **F** if it is False.

- T F a) Summer is warm.
 T F b) The Earth is tipped toward the Sun in winter.
 T F c) A desert climate is dry.
 T F d) An arctic climate is warm.
 T F e) When it is summer in the North, it is winter in the South.

2. The four seasons are shown. Put them in the order that they happen from **1** to **4**. Start with the coldest season.



a) spring



b) winter



c) fall



d) summer



Seasons

3. Answer the questions in full sentences.

a) Rain is different in different places. Pick two climates. How is the rain different?

b) Why is it warmer in the North half of Earth in the summer?

Extension & Application

4. Think back over the last year. What was the weather like where you live? How did the weather change with the seasons? When was it hot? When was it rainy? When was it windy?

Write down everything you can remember about each of the four seasons. Use the graphic organizer on page 12 to write your answers. Draw a picture of each season as it looks to you where you live.

Do you know what type of climate you live in? Are you in the North or South part of the Earth? Do you see all 4 seasons or just a few?



Make a Rain Gauge

A rain gauge is something you can use to see how much rain falls. In this experiment you will make your own and test it on a rainy day.



This is what you will need:

- Find a glass with straight sides. The glass should look like this:
- A ruler or tape measure



This is what you do:

1. Put the glass outside in a place that is open to the sky.
2. Wait for it to rain.
3. When it stops raining, use the measuring tool to see how deep the water in the glass is.
4. Find out how much rain fell. Go on the internet or TV to find out.

1. Does your measurement match what the actual amount of rain was?

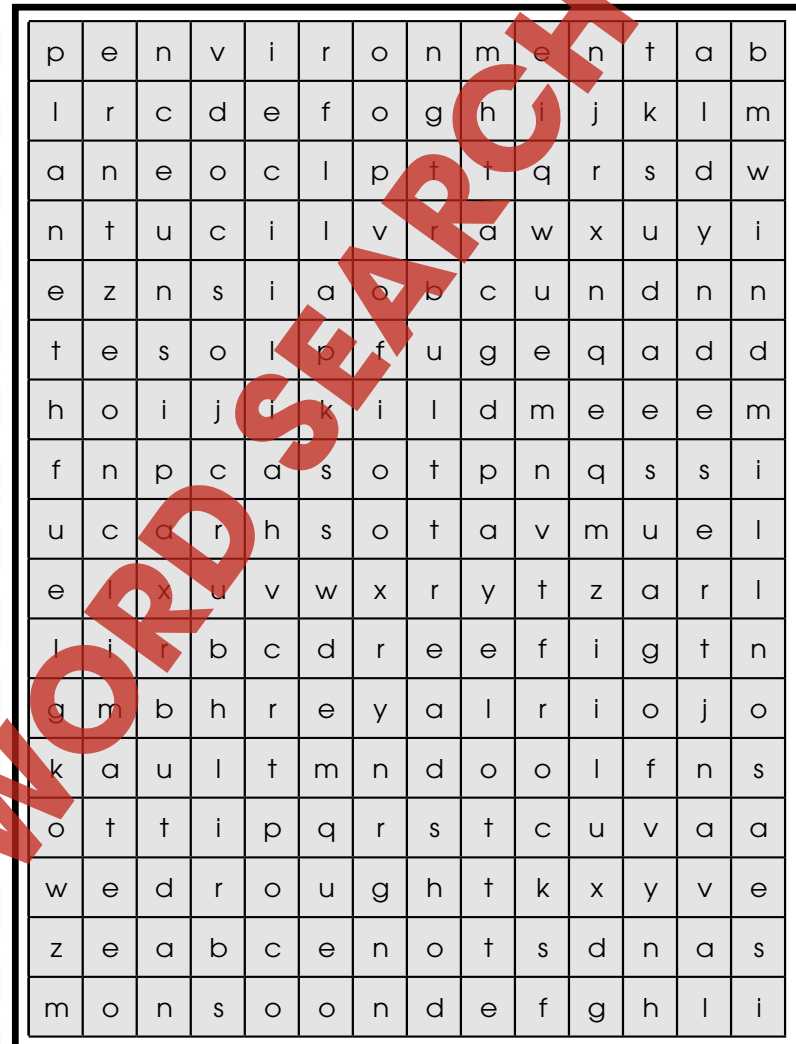
2. How does evaporation work? Did it affect your reading?



Word Search

Find all of the words in the Word Search. Words are written across, up, down, on an angle, and some are even written backwards.

- climate
- cloud
- desert
- dune
- drought
- environment
- equator
- erosion
- flood
- fog
- fossil
- fuel
- hail
- lava
- layer
- Mediterranean
- monsoon
- planet
- precipitation
- rocks
- sandstone
- season
- tropical
- windmill



Comprehension Quiz

Part C

Answer each question in full sentences.

1. Tell why we can't drink the water in the ocean. Tell why we can't drink most water that is not in oceans.

2

2. Tell which things are in the solar system.

3

3. What is the rule about the age of rock layers?

2

4. Tell about the rock cycle. Begin with, "Rocks wear away."

6

5. Tell how the lengths of shadows change during the day. Begin with sunrise, and end with sunset.

3

SUBTOTAL: /16

The Four Seasons



WINTER



SPRING



SUMMER



FALL



Seasons



1. Circle **T** if the sentence is True or **F** if it is False.

- T F a) Summer is warm.
- T F b) The Earth is tipped toward the Sun in winter.
- T F c) A desert climate is dry.
- T F d) An arctic climate is warm.
- T F e) When it is summer in the North, it is winter in the South.

2. The four seasons are shown. Put them in the order that they happen from **1** to **4**. Start with the coldest season.



a) spring



b) winter



c) fall



d) summer

1.

- a) **T**
- b) **F**
- c) **T**
- d) **F**
- e) **T**

3.

a) Answers will vary, but may include: A monsoon climate gets most of its rain in the summer. A Mediterranean climate gets most of its rain in the winter.

b) The north half of Earth is tipped toward the Sun in the summer. Sunlight shines straight towards that part of Earth.

2.

4.

- a) **2**
- b) **1**

Answers will vary

- c) **4**
- d) **3**

10

11



EASY MARKING ANSWER KEY