



Assessment Rubric



Cells



Student's Name: _____ Assignment: _____ Level: _____

	Level 1	Level 2	Level 3	Level 4
Understanding Concepts	Demonstrates a limited understanding of concepts. Requires teacher intervention.	Demonstrates a basic understanding of concepts. Requires little teacher intervention.	Demonstrates a good understanding of concepts. Requires no teacher intervention.	Demonstrates a thorough understanding of concepts. Requires no teacher intervention.
Analysis and Application of Key Concepts	Limited application and interpretation in activity responses.	Basic application and interpretation in activity responses.	Good application and interpretation in activity responses.	Strong application and interpretation in activity responses.
Creativity and Imagination	Limited creativity and imagination applied in projects and activities.	Some creativity and imagination applied in projects and activities.	Satisfactory level of creativity and imagination applied in projects and activities.	Beyond expected creativity and imagination applied in projects & activities.
Application of Own Interests	Limited application of own interests in independent or group environment.	Basic application of own interests in independent or group environment.	Good application of own interests in independent or group environment.	Strong application of own interests in independent or group environment.

SAMPLE

NEXT STEPS:

WEAKNESSES:

STRENGTHS:



Single-Celled & Multicellular Organisms

1. Draw a line from the word on the left to its matching definition. Which word is left over? Use a dictionary to help you write out its definition.

1	organism	The structure in the middle of the cell.	A
2	amoeba	Something in a cell that carries genetic information.	B
3	multicellular	Describes an organism that is made up of only one cell.	C
4	single-celled	A simple, yet complicated, single-celled organism.	D
5	nucleus	A small structure in multicellular organisms that carries out day-to-day cell operations.	E
6	DNA	Describes an organism that is made up of many cells.	F
7	organelle	_____ _____	G

SAMPLE

2. In the space below, draw what you think a cell might look like. If the nucleus is in the middle of the cell, what do you think it would look like?



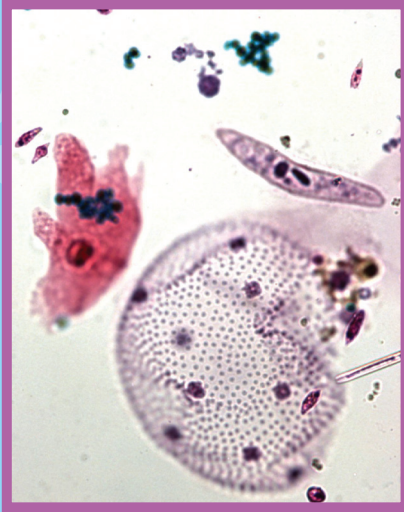
Brainstorming Organizer

A large rectangular frame containing a 3x3 grid of empty ovals for brainstorming. The grid is overlaid with a large, diagonal watermark that reads "SAMPLE" in bold, black letters. Below the watermark, the text "(a cell's genetic information)" is written in a smaller font. Several DNA double helix structures are scattered across the grid, and faint background illustrations of a tree, a paperclip, a crescent moon, and stars are visible.

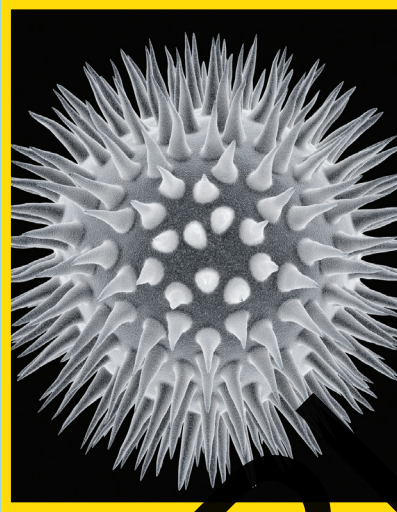
Single-Celled & Multicellular Organisms



Single-Celled Organisms



Amoeba



Bacteria



Paramecium

Multicellular Organisms



Fern Plant



Mushroom



Worm