



# Contents



## TEACHER GUIDE

- Assessment Rubric ..... 4
- How Is Our Resource Organized? ..... 5
- Bloom's Taxonomy for Reading Comprehension ..... 6
- Vocabulary ..... 6



## STUDENT HANDOUTS

### • Reading Comprehension

1. Location and Geography .....	
2. Background and Causes .....	
3. Major Figures .....	
4. Major Battles .....	
5. Weapons of the War .....	7
6. The Air War .....	
7. Consequences and Aftermath of the War .....	
8. Remembering the War .....	

- Hands-on Activities ..... 11
- Crossword ..... 15
- Word Search ..... 16
- Comprehension Quiz ..... 17



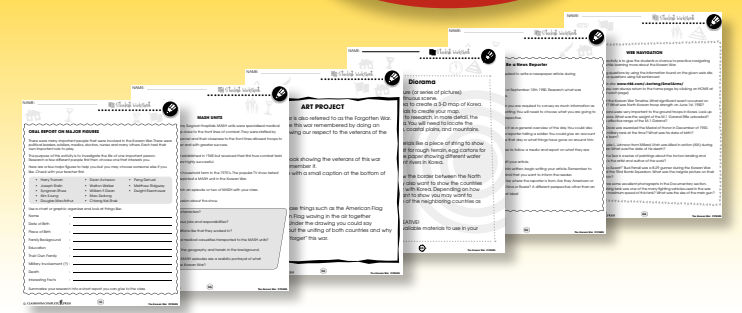
## EASY MARKING™ ANSWER KEY ..... 19

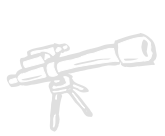
## MINI POSTERS ..... 21

✓ **6 BONUS Activity Pages!** Additional worksheets for your students

- Go to our website: [www.classroomcompletepress.com/bonus](http://www.classroomcompletepress.com/bonus)
- Enter item CC5505
- Enter pass code CC5505D

**FREE!**





## Weapons of the War



1. List some weapons that you think were used in the Korean War.

---



---



---

2. Can you name some new weapons that you think they might have used?

---



---



---

3. Where do you think that most of the weapons used in the Korean War came from?

---



---



---

4. Does the United States currently supply any other countries with weapons?

---



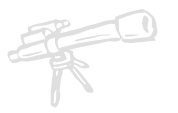
---



---



## Weapons of the War



**W**hen the Korean War began in June of 1950, South Korean forces were basically equipped with small arms supplied by the United States. In the United States the government believed that the South Koreans should be limited to small defensive arms. The North Koreans, on the other hand, had enlisted the help of Stalin and the Soviet Union. The Soviets supplied the North Korean Army with small arms, heavy arms (like machine guns), artillery, tanks and attack planes. The South Korean Army had no artillery, tanks, attack planes, or anti-tank weapons. When the North Korean Army rolled across the border on June 25, 1950 it met with little resistance. Even Task Force Smith that arrived from Japan to slow the Communist advance was ill-equipped for fighting against tanks.



At the end of World War II a large portion of the U.S. military was demobilized and dismantled, believing that ground wars on such a large scale would never be fought again. By the time the Korean War started five years later, the United States had not developed any new weapons. Most of the Korean War, on both sides, was fought with old World War II vintage weapons. The main weapon of the UN ground soldier was the U.S. M-1 Garand Rifle. It was first produced in the 1930's and was widely used in World War II. It was a semi-automatic weapon that could fire around 30 rounds per minute and was light, weighing just under 10 pounds. The most popular automatic weapon for the UN forces was the Browning automatic rifle (or BAR). It fired the same cartridge as the M-1



## Weapons of the War



1. Circle the word **TRUE** if the statement is TRUE or Circle the word **FALSE** if it is FALSE.

- a) The United States gave South Korea small arms.  
**TRUE      FALSE**
- b) The United States gave North Korea heavy arms.  
**TRUE      FALSE**
- c) When North Korean forces entered South Korea they met with little resistance.  
**TRUE      FALSE**
- d) After WWII the United States built up their ground forces believing that there would be another war.  
**TRUE      FALSE**
- e) After WWII the United States did not develop any new weapons.  
**TRUE      FALSE**
- f) The main weapon of the United Nations ground soldier was the U.S. M-1 Garand Rifle.  
**TRUE      FALSE**
- g) The Soviets were often armed with bolt action Russian 7.62 mm Rifles.  
**TRUE      FALSE**
- h) One of the major advantages North Korea had was their fighter aircraft.  
**TRUE      FALSE**

2. Explain the difference between the weapons the South Koreans used and the weapons the North Koreans used at the start of the war. Compare and contrast them.

---



---

3. During the Korean War the North Koreans used the Soviet T-34 tank. Using the internet and your class computer compare and contrast the T-34 tank with any one of the three tanks used by the UN forces- the M4 Sherman, the M26 Pershing or the M46 Patton.

---



---



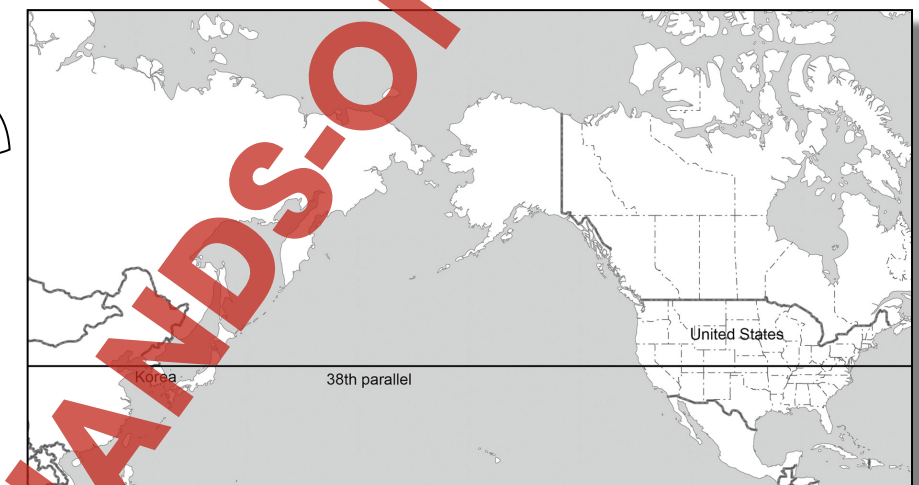
## A Geographical Comparison



The border between North and South Korea is the 38th parallel of latitude. Follow the 38th parallel through the United States. Pick a state that the parallel runs through and compare and contrast that state with that of Korea.

Look at things like:

- Terrain
- Geography
- Climate
- Seasons
- Agriculture
- Industry
- Cities





# Crossword Puzzle!



**Across**

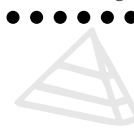
1. Small country bordering on China and Russia
3. Attack of an army for conquest
5. In the Cold War both sides feared a \_\_\_\_\_ war
7. This aircraft was first used in the Korean War
9. Type of bomb dropped on Hiroshima and Nagasaki
11. First president of South Korea
13. North Korea, the Soviet Union and China had this type of government



**Down**

2. the 38th parallel is this type of line
4. Secretary General of the Soviet Union
6. people who lost their homes due to the war
8. Communist country that supplied arms to North Korea
10. U.S. President at the start of the Korean War
12. A piece of land nearly surrounded by water
14. U.S. General - Commander of UN forces
16. A type of Soviet propeller plane used by the North Korean Air Force
18. These mobile weapons gave North Korea a big advantage at the start of the war

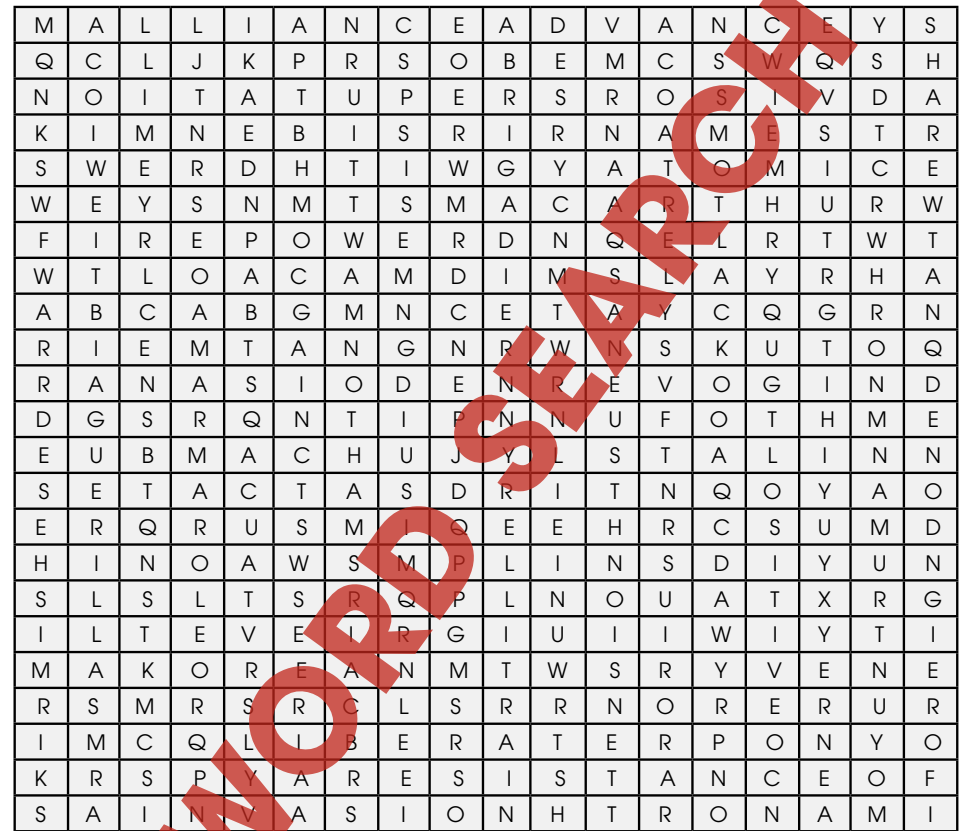
Atomic	MacArthur	Syngman Rhee
Communist	Nuclear	Tanks
Helicopter	Peninsula	Truman
Invasion	Refugees	Yakovlev
Korea	Soviet Union	
Latitude	Stalin	



# Word Puzzle



Find all of the words in the Word Search. Words are written horizontally, vertically, diagonally, and some are even written backwards.



**Word List**

Advance	Artillery	Fought	Latitude	Reputation	Stalin
Advisors	Atomic	Governed	Liberate	Resistance	Tension
Air	Brigadier	Guerillas	MacArthur	Rhee	Truman
Alliance	Firepower	Invasion	Nation	Skirmishes	War
Arms	Foreign	Korea	North	South	Withdrew



# Comprehension Quiz

**Part A**

1. When did the Korean War start?
  - A. June 25, 1948
  - B. June 25, 1941
  - C. June 25, 1950
  - D. June 25, 1949
2. North Korea is mostly made up of:
  - A. Mountains
  - B. Plains
  - C. Lowlands
  - D. None of the above
3. DMZ stands for:
  - A. Decomposed Military Zone
  - B. Demilitarized Zone
  - C. Decommissioned Monetary Zone
  - D. None of the above
4. The Han River flows through:
  - A. Nakdong
  - B. Pusan
  - C. Chalsin
  - D. Seoul
5. Who was the US President when the Korean War started?
  - A. Truman
  - B. Eisenhower
  - C. Stalin
  - D. George W. Bush
6. Kim Il-sung was:
  - A. Leader of North Korea
  - B. Secretary General
  - C. A Captain in the Soviet Red Army
  - D. All of the above
7. South Korean military and police forces executed people for being:
  - A. Democratic
  - B. Communist
  - C. Korean
  - D. American
8. In the United States the Korean War is often referred to as:
  - A. A police action
  - B. The Korean Conflict
  - C. The Senseless War
  - D. a and b
9. The Korean War Memorial in Washington, DC was dedicated by:
  - A. Clinton
  - B. Bush
  - C. Truman
  - D. Eisenhower
10. How many United Nations countries were involved in the war?
  - A. 25
  - B. 24
  - C. 20
  - D. 22

20

1

1

1

1

1

1

1

1

1

1

1

1

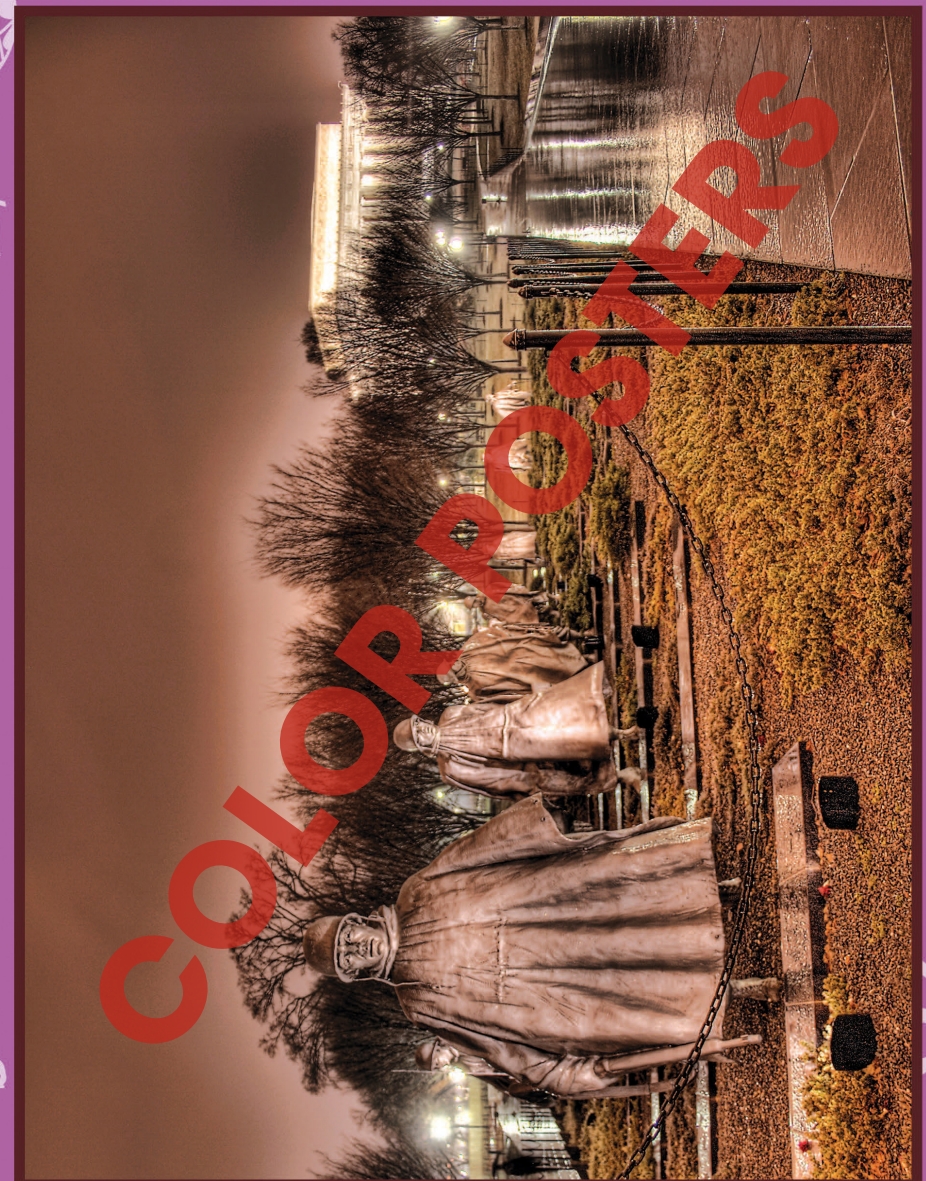
1

1

1

SUBTOTAL: /10

## The Korean War Memorial Washington, D.C.





NAME: \_\_\_\_\_

After You Read 

# Comprehension Quiz

## Part A

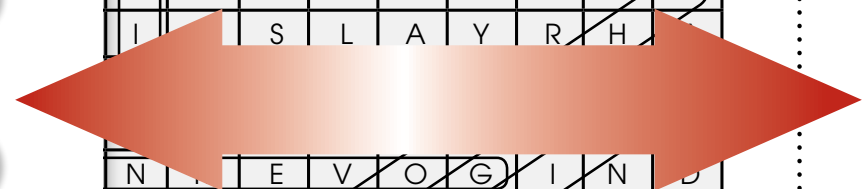
- When did the Korean War start?
  - June 25, 1948
  - June 25, 1941
  - June 25, 1950
  - June 25, 1949
- North Korea is mostly made up of:
  - Mountains
  - Plains
  - Lowlands
  - None of the above
- DMZ stands for:
  - Decomposed Military Zone
  - Demilitarized Zone
  - Decommissioned Monetary Zone
  - None of the above
- The Han River flows through:
  - Nakdong
  - Pusan
  - Choisin
  - Seoul
- Who was the US President when the Korean War started?
  - Truman
  - Eisenhower
  - Stalin
  - George W. Bush
- Kim Il-sung was:
  - Leader of North Korea
  - Secretary General
  - A Captain in the Soviet Red Army
  - All of the above
- South Korean military and police forces executed people for being:
  - Democratic
  - Communist
  - Korean
  - American
- In the United States the Korean War is often referred to as:
  - A police action
  - The Korean Conflict
  - The Senseless War
  - a and b
- The Korean War Memorial in Washington, DC was dedicated by:
  - Clinton
  - Bush
  - Truman
  - Eisenhower
- How many United Nations countries were involved in the war?
  - 25
  - 24
  - 20
  - 22


SUBTOTAL: /10

## Multiple Answers

A	D	V	A	N	C	E	Y	S
B	E	M	C	S	W	Q	S	H
R	S	R	O	S	I	V	D	A
I	R	N	A	M	E	S	T	R
G	Y	A	T	O	M	I	C	E
A	C	A	R	T	H	U	R	W
D	N	Q	E	L	R	T	W	T
I	S	L	A	Y	R	H		
N	E	V	O	G	I	N	D	
O	N	U	F	O	T	H	M	E
Y	L	S	T	A	L	I	N	N
R	I	T	N	Q	O	Y	A	O
E	E	H	R	C	S	U	M	D
L	N	S	D	I	Y	U	N	
L	N	O	U	A	T	X	R	G
I	U	T	T	W	I	Y	T	I
T	W	S	R	Y	V	E	N	E
R	R	N	O	R	E	R	U	R
A	T	E	R	P	O	N	Y	O
I	S	T	A	N	C	E	O	F
N	H	T	R	O	N	A	M	I



## Part A

- C
- A
- B
- D
- A
- D
- B
- D
- A
- D

## Part B

- TRUE
- TRUE
- FALSE
- FALSE
- TRUE
- TRUE
- FALSE
- TRUE
- FALSE
- TRUE

EASY MARKING ANSWER KEY