

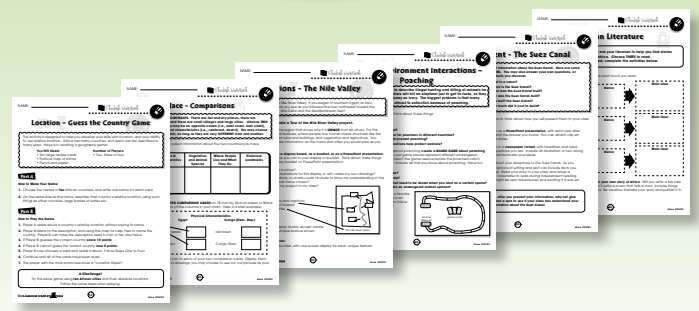
	<b>TEACHER GUIDE</b>	
•	Assessment Rubric .....	4
•	How Is Our Resource Organized? .....	5
•	Bloom’s Taxonomy for Reading Comprehension .....	6
•	Vocabulary .....	6
	<b>STUDENT HANDOUTS</b>	
•	Reading Comprehension – Five Themes of Geography	
	1. Location .....	7
	2. Place .....	
	3. Human and Environmental Interactions .....	
	4. Movement .....	
	5. Regions .....	
•	Crossword .....	12
•	Word Search .....	13
•	Comprehension Quiz .....	14
	<b>EASY MARKING™ ANSWER KEY</b> .....	16
	<b>STUDENT BLACKLINE MAPS</b> .....	18
	<b>MINI POSTERS</b> .....	30

**FREE!**

✓ **6 BONUS Activity Pages!** Additional worksheets for your students

- Go to our website: [www.classroomcompletepress.com/bonus](http://www.classroomcompletepress.com/bonus)
- Enter item CC5753
- Enter pass code CC5753D





## Africa - Location

1. Which word matches the definition? Color the arrow that points to the correct word. You may use an atlas or a dictionary to help.

hemisphere	←	<b>A</b> One of the two shapes made by cutting a sphere in half.	→	latitude
prime meridian	←	<b>B</b> An imaginary line running around the middle of the Earth in an east-west direction. It is half way between the North and South Poles.	→	equator
continent	←	<b>C</b> A word that is used to describe the usual temperature, the rain or snowfall, and the winds found in a certain place.	→	climate
prime meridian	←	<b>D</b> An imaginary line of longitude running from the North Pole to the South Pole. It divides the world into the eastern and western hemispheres.	→	equator

2. On the map, color Africa in green. Show the prime meridian as a red line. Show the equator as a purple line.



## Africa - Location

We can describe **location** in two ways. If we describe the **absolute location** of a place, we describe exactly where it is found by looking at where lines of **latitude** and **longitude** cross. When we describe its **relative location**, we describe the things around it and the things that connect it to other places.



Africa is the world's second largest continent. It is so large that parts of it are in both the eastern and western hemispheres, and both of the northern and southern hemispheres! Both the **Equator** and the **prime meridian** pass through Africa, meeting at a point just south of Ghana, in the Gulf of Guinea. Its eastern boundary is near 50°E longitude, and its western boundary is near 17°W longitude, with almost 5,000 miles between these two points! It is also approximately 5,000 miles from its most northerly point to its most southerly point. Because it is so large, it is very difficult to give its absolute location. It is easier to describe Africa's relative location by looking at those features and places around it.

Africa is like a large island, surrounded by several large bodies of water. The Atlantic Ocean lies to the west, the Indian Ocean to the east, and the Mediterranean Sea to the north. These bodies of water provide **links** between Africa and the other continents. Europe is to the north, Antarctica is to the south, and Asia is to the east. Africa is linked to Asia at the Sinai Peninsula.

Why is Africa like an island?



Africa's huge size and location gives it many different, extreme **climates**. In Africa we find both the Sahara Desert and the Kalahari Desert, each vast, dry, and hot. Near the Equator are huge tropical rainforests, hot, wet, and humid, and full of wildlife. There are also many areas of flat, hot plains through which herds of animals pass, and several mountainous regions throughout the continent.



## Africa - Location

1. Circle **T** if the statement is true or **F** if it is false.

T = True  
F = False

- T F a) Africa is the world's second largest continent.
- T F b) The prime meridian does not pass through Africa.
- T F c) The Atlantic Ocean lies to the east of Africa.
- T F d) Europe is north of Africa.
- T F e) Antarctica is to the south of Africa.
- T F f) Africa is linked to Asia at the Panama Canal.
- T F g) The Sahara is a rainforest in Africa.

2. You be the teacher! Someone has matched the word on the left to the definition on the right. Are they correct? If **yes**, mark it correct with a check mark in the box beside each. If **no**, write an **X** in the box and correct the work by drawing an arrow to the correct definition. You may use an atlas or a dictionary to help.

<input type="checkbox"/>	prime meridian	→	<b>A</b> Lines we have drawn on a map to find the location of a place north or south of the equator.
<input type="checkbox"/>	longitude	→	<b>B</b> An imaginary line of longitude running from the North Pole to the South Pole through Greenwich, England. It divides the world into the eastern and western hemispheres.
<input type="checkbox"/>	hemisphere	→	<b>C</b> One of the two shapes made by cutting a sphere in half.
<input type="checkbox"/>	latitude	→	<b>D</b> Lines we have drawn on a map to find the location of a place east or west of the prime meridian.



## Africa - Location

Answer the questions in complete sentences.

- 3. Why is Africa in each of the Northern, Southern, Eastern, and Western Hemispheres?
- 4. Which major bodies of water surround Africa?

### Research and Applications

- 5. Using the **Countries Graphic Organizer** on the next page, write the names of three different countries in each box or circle. For example, looking at a map of Africa, find three countries in **northern Africa** and write them in the Northern Africa box. Do the same for each box or circle, for each part of the continent. Compare your organizer with a friend's and look for differences.
- 6. Many atlases list the exact locations of the world's major cities using latitude and longitude. Using an atlas, find the exact location of **ten** African cities of your choice. Also, list the country in which we find each city and the hemisphere(s) in which it is found. Make a chart like this to help you organize the information you find. One has been done for you.

City Name	Hemisphere (give two)	Exact Location	Country
Cairo	northern and eastern	30°N latitude 31°E longitude	Egypt

- 7. Find the **Democratic Republic of Congo** on a map of Africa. Using the features around it, describe its **relative location**.





# Crossword Puzzle!

- plains
- desert
- game reserve
- absolute
- continent
- negative
- transportation
- endangered
- Asia
- rural
- region
- communication
- contrasts
- Nile Valley
- links



### Across

- 1 Sharing of ideas through speech, sign language and printed words
- 4 Poaching is an example of \_\_\_\_\_ human/environment interactions
- 6 Many of Africa's animals are \_\_\_\_\_ species
- 8 A remote area with few people
- 9 The Sahara is a \_\_\_\_\_ in Africa
- 11 A \_\_\_\_\_ can be described by the languages spoken there
- 13 Africa is a continent of huge \_\_\_\_\_
- 14 Flat, open areas of land covered mostly by grasses

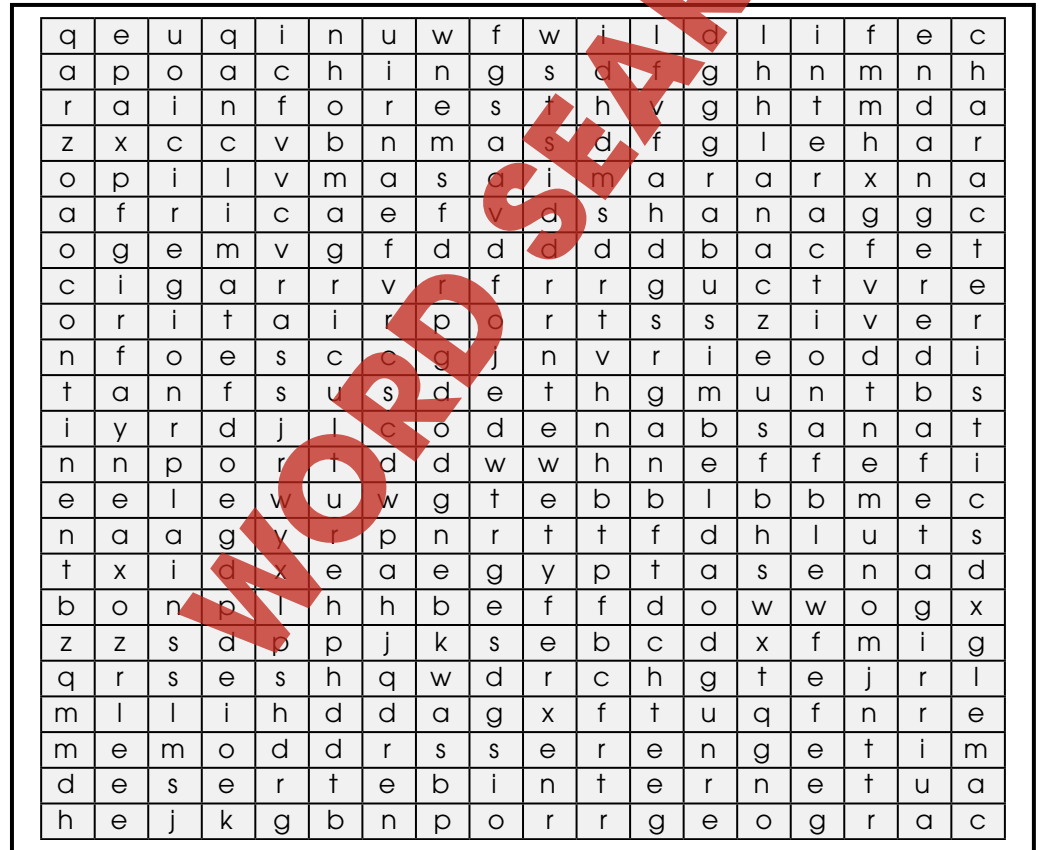
### Down

- 1 Africa is the world's second largest \_\_\_\_\_
- 2 Movement involving vehicles
- 3 The \_\_\_\_\_ is a region known for its ancient Egyptian ruins
- 5 Protected area where animals can live free of threats from humans
- 7 It is difficult to describe Africa's \_\_\_\_\_ location
- 10 Africa's coastal ports provide \_\_\_\_\_ to other continents
- 12 Africa is linked to \_\_\_\_\_ at the Panama Canal

# Word Search

Find all of the words in the Word Search. Words may be horizontal, vertical, or diagonal. A few may even be backwards! Look carefully!

- hemisphere
- Africa
- wildlife
- region
- Serengeti
- monument
- Abu Simbel
- camel
- continent
- rainforest
- plains
- agriculture
- unique
- Masai Mara
- interaction
- poaching
- Suez Canal
- airports
- climate
- desert
- characteristics
- trade
- Egypt
- endangered
- irrigate
- elephant
- Internet
- oxen



# Comprehension Quiz

### Part A

Circle **T** if the statement is true or **F** if it is false.

**T** = True  
**F** = False

- T F** a) Both the prime meridian and the equator pass through Africa.
- T F** b) Africa is like a giant island because it is surrounded by water.
- T F** c) People in Africa live in either traditional or more modern ways.
- T F** d) The Suez Canal provides a shortcut from the Indian Ocean to the Mediterranean Sea.
- T F** e) Game reserves provide protection for animals from poaching. The Aswan High Dam was built to help control the waters of the Nile River.
- T F** f) Latitude and longitude are used to find a place's relative location.
- T F** g) The word urban describes an area in the country or a remote area.

### Part B

Label the map by doing the following:

- 1. Show the following features on the map by writing the letter on the map in the correct location.

- a) Atlantic
- b) Europe
- c) Indian Ocean
- d) Atlantic Ocean
- e) Mediterranean Sea



- 2. Color the prime meridian **red** and the equator **purple**.

SUBTOTAL: /14

# Africa World Location Map





# Africa - Location



Answer the questions in complete sentences.

3. Why is Africa in each of the Northern, Southern, Eastern, and Western Hemispheres?

\_\_\_\_\_

4. Which major bodies of water surround Africa?

\_\_\_\_\_

## Research and Applications

5. Using the **Countries Graphic Organizer** on the next page, write the names of three different countries in each box or circle. For example, looking at a map of Africa, find three countries in **northern Africa** and write them in the Northern Africa box. Do the same for each box or circle, for each part of the continent. Compare your organizer with a friend's and look for differences.

6. Many atlases list the exact locations of the world's major cities using latitude and longitude. Using an atlas, find the exact location of **ten** African cities of your choice. Also, list the country in which we find each city and the hemisphere(s) in which it is found. Make a chart like this to help you organize the information you find. One has been done for you.

City Name	Hemisphere (give two)	Exact Location	Country
Cairo	northern and eastern	30°N latitude 31°E longitude	Egypt

7. Find the **Democratic Republic of Congo** on a map of Africa. Using the features around it, describe its **relative location**.

\_\_\_\_\_  
\_\_\_\_\_

3.

The prime meridian and equator cross in the Atlantic off of Ghana, etc.

4.

Indian Ocean, Atlantic Ocean, Mediterranean Sea

5.

Answers will vary

6.

Answers will vary

7.

Possible answers: east of Congo, north of Zambia, south of Sudan, west of Uganda, etc.

Across:

1. communication
4. negative
6. endangered
8. rural
9. desert
11. region
13. contrasts
14. plains

Down:

1. continent
2. transportation
3. Nile Valley
5. game reserve
7. absolute
10. links
12. Asia

10

12



# EASY MARKING ANSWER KEY