



Critical Thinking Skills



Mapping Skills with Google Earth™

| Skills for Critical Thinking | | Reading Comprehension | | | | | |
|------------------------------|---|-----------------------|-------------------------------------|-------------------------------|---------------------------|------------------|---------------|
| | | Basics of Map Reading | Latitude, Longitude and Times Zones | Mapping Geographical Features | Mapping Cultural Features | Map Your Country | Map the World |
| LEVEL 1 Remembering | <ul style="list-style-type: none"> Match Show or Label List Information Recall Details Find Information | ✓ | | ✓ | ✓ | ✓ | ✓ |
| LEVEL 2 Understanding | <ul style="list-style-type: none"> Describe & Compare Summarize Explain Select | ✓ | ✓ | ✓ | ✓ | ✓ | |
| LEVEL 3 Applying | <ul style="list-style-type: none"> Organize Information Interview Apply Utilize Alternative Research Tools (Google Earth) | ✓ | ✓ | ✓ | ✓ | ✓ | |
| LEVEL 4 Analysing | <ul style="list-style-type: none"> Conclude Analyze | | ✓ | ✓ | ✓ | ✓ | |
| LEVEL 5 Evaluating | <ul style="list-style-type: none"> Evaluate Compare | | ✓ | ✓ | ✓ | ✓ | |
| LEVEL 6 Creating | <ul style="list-style-type: none"> Design Create | | | ✓ | ✓ | ✓ | |

Based on Bloom's Taxonomy



Mapping Geographical Features

1. Match the word on the left to its definition on the right by drawing a line.

| | | | |
|---|-----------------|--|---|
| 1 | topographic map | A map, which shows the boundaries of cities, states, provinces and countries | A |
| 2 | elevation | A rapid rise in elevation | B |
| 3 | contour line | A slow rise in elevation | C |
| 4 | steep | A map, which shows geographical features such as forests and hills | D |
| 5 | gradual | The height that is exactly half way between low and high tide | E |
| 6 | political map | A line on a map, which connects points of land that are the same height | F |
| 7 | sea level | A change in height | G |
| 8 | green | The color that represents forests and vegetation | H |
| 9 | brown | The color that represents deserts and national parks | I |

SAMPLE



Part C

1. Lines of latitude divide the Earth horizontally into equal sections. Lines of longitude divide the Earth vertically into equal sections.
2. They allow you to communicate where something is easily. They give a reference point that people can use to find places.
3. Political maps communicate political boundaries such as cities, towns and states, and are on a large scale. Topographic maps are on a small scale and tell us about physical things such as elevation.
4. Urban communities have a lot of people in an area, have schools, hospitals, libraries and other amenities. Rural communities have fewer people and they are more spread out. They also are set in the countryside outside of cities and tend to have fewer amenities.
5. The world contains seven continents, which are massive areas of land, four oceans and numerous seas. Some scientists consider the area around Antarctica, to be the 5th ocean, which is known as the Southern Ocean. Seventy percent of the earth's surface is covered by water. The world is a very diverse place and people live very differently in the many places of the world. There are 195 countries in the world.

Part A

1. Compass Rose
2. Scale
3. 5 miles
4. 800 km
5. Title, orientation, date, author, legend, scale, index, grid, surrounding area.
6. Noon.

Part B

1. TRUE
2. FALSE
3. The 7 continents, 4 oceans, Greenland, the United States, and Canada should be labeled.

Word Search Answers

SAMPLE

| | | | | | | | | | | | | | | | | | |
|---|---|---|---|---|---|---|---|---|---|---|---|---|---|---|---|---|---|
| C | s | e | r | t | C | d | e | p | u | e | c | n | i | v | o | r | p |
| C | o | m | p | a | s | r | o | s | e | l | e | g | e | n | d | m | |
| s | l | o | e | r | y | t | i | n | o | p | m | | | | | | |
| e | s | c | a | o | h | u | n | a | r | e | m | i | r | p | | | |
| r | t | a | d | o | u | h | v | e | r | t | n | s | s | b | | | |
| C | a | r | d | i | n | a | r | e | c | t | i | o | n | s | | | |
| d | t | C | l | d | r | t | e | r | a | d | n | u | o | b | | | |
| e | C | o | u | C | f | e | r | g | s | t | k | t | r | t | | | |
| p | e | q | o | r | i | q | u | i | y | c | a | t | i | n | e | t | |
| u | e | q | u | r | y | t | e | r | p | a | t | i | c | a | l | | |
| e | C | a | d | i | p | a | r | h | v | k | y | u | e | m | a | | |
| c | t | i | n | a | r | g | o | l | C | v | i | t | a | l | u | | |
| n | i | r | u | m | o | p | e | h | i | l | i | p | j | l | d | a | |
| v | o | l | e | m | o | u | r | n | e | m | e | r | g | | | | |
| r | o | s | o | h | o | v | a | d | l | o | v | e | n | s | j | t | d |
| p | j | i | C | t | a | l | t | v | d | e | l | a | c | s | | | |

Across

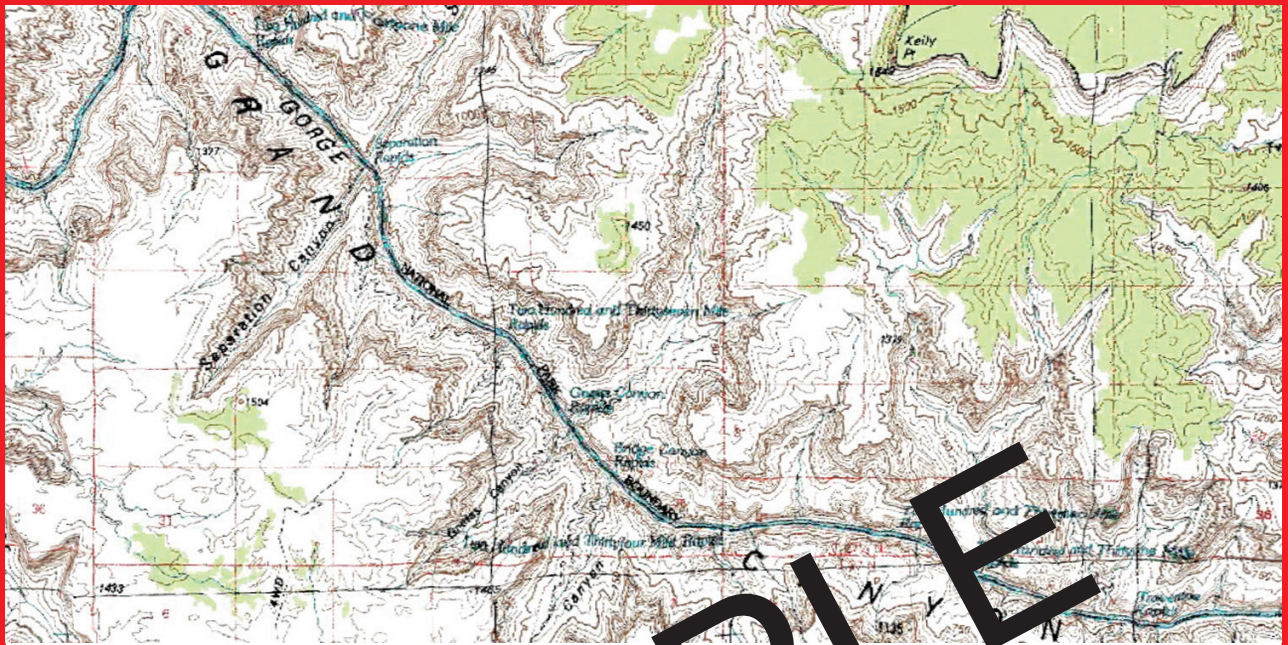
3. choropleth
4. steep
6. scale
8. prime meridian
11. author
12. title
13. sea level

Down

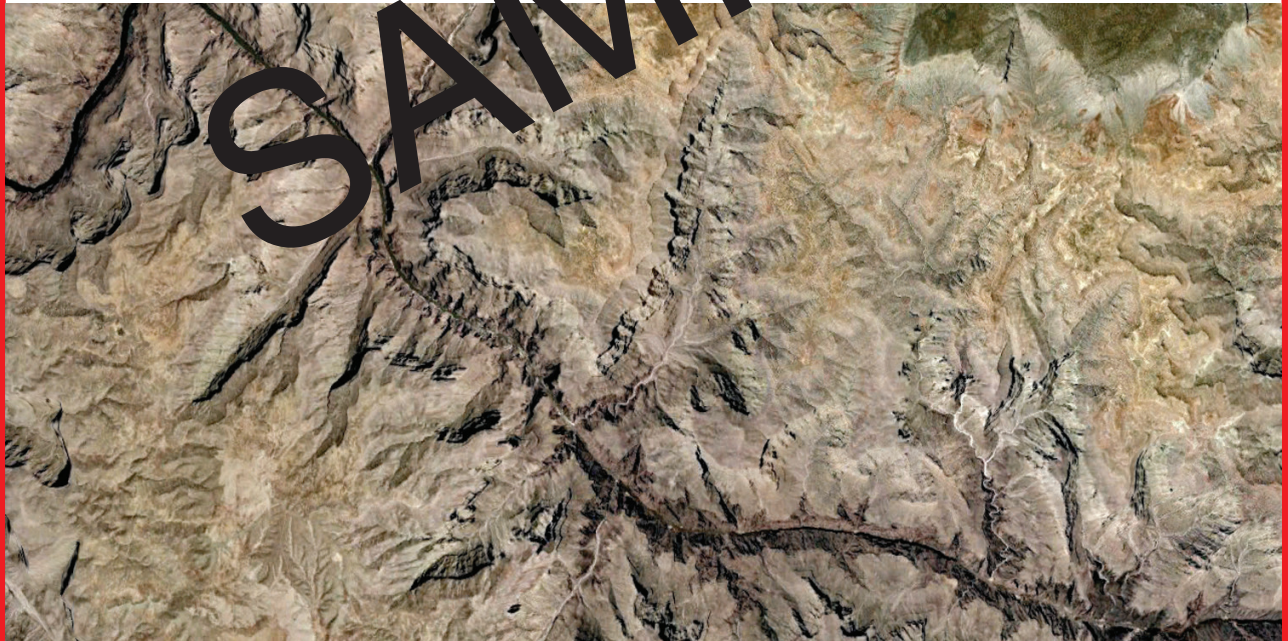
1. latitude
2. compass rose
5. cardinal
7. community
9. amenities
10. todaligs



Topographic Map



A Topographic Map of the Grand Canyon in Arizona



A Satellite Map of the Grand Canyon in Arizona