

# Contents



## TEACHER GUIDE

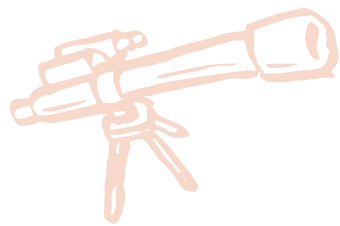
• Assessment Rubric .....	4
• How Is Our Resource Organized? .....	5
• Bloom's Taxonomy for Reading Comprehension .....	6
• Vocabulary .....	6



## STUDENT HANDOUTS

### READING COMPREHENSION

• Value of Money and Budgeting .....	
• Buying of Goods and Services .....	
• Menu Math and Grocery Shopping Math .....	7
• Web Buying and Internet Fraud .....	
• Calculating Sales Tax .....	
• Forms of Payment .....	
• Hands-on Activities .....	13
• Crossword .....	17
• Word Search .....	18
• Comprehension Quiz .....	19



## EASY MARKING™ ANSWER KEY

21

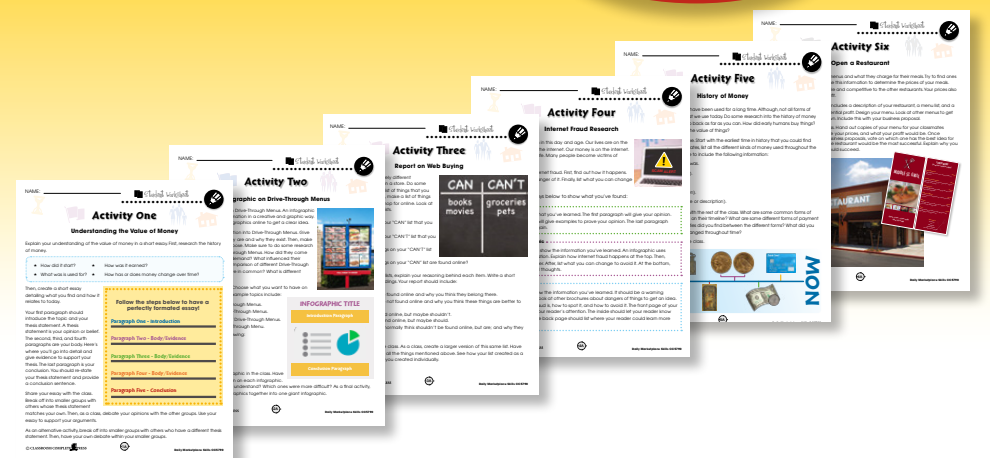
## MINI POSTERS

23

✓ **6 BONUS Activity Pages!** Additional worksheets for your students

**FREE!**

- Go to our website:  
[www.classroomcompletepress.com/bonus](http://www.classroomcompletepress.com/bonus)
- Enter item CC5790
- Enter pass code CC5790D



NAME: \_\_\_\_\_



## Menu Math & Grocery Shopping Math

1. Michael goes to the grocery store and buys more things than was on his list. When he gets to the checkout, he doesn't have enough money to pay for everything. What should he do?



2. Evelyn has \$20.00 to spend for lunch at a local restaurant. She gets a soup and sandwich with a water for \$12.00. She also leaves a 10% tip. Does Evelyn have enough money?

3. With a straight line, connect each word on the left with its meaning on the right.

1	limit	What something is worth.	A
2	flyers	To replace something with another.	B
3	value	The most something can be.	C
4	re-usable	Feedback and opinion on something.	D
5	reviews	Something that can be used more than once.	E
6	menu	A list of food at a restaurant.	F
7	substitutions	Something that tells you about specials or sales.	G

NAME: \_\_\_\_\_



## Menu Math & Grocery Shopping Math

Eating out can be expensive. It can also be a nice treat. To stay inside your budget, look for restaurants that have good food at good prices.

**Marketplace Tip**

Remember to add the tip to your budget. This is usually between 15-20% of the total price.

AVERY'S STEAKHOUSE	
BILL #400	TABLE #24
1 SODA	\$2.00
1 STEAK DINNER	\$16.50
1 CHOCOLATE CAKE	\$4.00
TAXES:	\$2.25
TOTAL:	\$24.75
TIP:	\$4.50
TOTAL:	\$29.25

To budget for a dinner out, make sure you plan ahead. Look up reviews of local restaurants. Go to their website to look at their menu and compare prices. Make sure you set a limit of what you can spend.

When you get to the restaurant, you'll have to break down the menu. Are the prices listed? How are they listed? Are there extra costs for substitutions or adding extra sides?

Make a note of what everything will cost before you place your order. Know how much your bill will be before you get it.

Logan ordered the following from the drive-through menu shown. Find out what Logan's bill will be.

Logan's Order:

Combo 1 \$ \_\_\_\_\_  
 Substitute Salad \$ \_\_\_\_\_  
 Combo 5 \$ \_\_\_\_\_  
 Ice Cream \$ \_\_\_\_\_  
 Bill: \$ \_\_\_\_\_

The Burger Place				
Combo 1	Combo 2	Combo 3	Combo 4	Combo 5
Burger, Fries and Drink <b>\$5.95</b>	Cheeseburger, Fries and Drink <b>\$6.50</b>	Hotdog, Fries and Drink <b>\$5.50</b>	Chicken Nuggets, Fries and Drink <b>\$4.95</b>	Salad and Drink <b>\$4.95</b>
<b>Extras</b>		<b>Substitutions</b>		
Ice Cream \$3.00 Apple Pie \$2.50 Cookie \$1.00		Change your side of fries to: Salad for \$2.00 Soup for \$2.50		

NAME: \_\_\_\_\_

## Menu Math & Grocery Shopping Math

1. Put a check mark (✓) next to the answer that is most correct.

- a) What do some grocery stores charge you extra for?

- A tax  
 B bags  
 C tip  
 D delivery

- b) What's a good thing to look at before you go out to a restaurant?

- A menu  
 B décor  
 C reviews  
 D both A and C

2. Label the picture of a restaurant bill below.

tip      order      total      tax

AVERY'S STEAKHOUSE	
BILL #400	TABLE #24
1 SODA	\$2.00
1 STEAK DINNER	\$16.50
1 CHOCOLATE CAKE	\$4.00
TAXES:	\$2.25
TOTAL:	\$24.75
TIP:	\$4.50
TOTAL:	\$29.25

A \_\_\_\_\_  
 B \_\_\_\_\_  
 C \_\_\_\_\_  
 D \_\_\_\_\_

NAME: \_\_\_\_\_



## Menu Math & Grocery Shopping Math

- 3.

STARTERS	MAINS	DESSERTS	DRINKS
Soup.....\$2.00	Spaghetti & Meatballs.....\$7.00	Ice Cream.....\$2.00	Water.....FREE
<b>Salads</b>		Chocolate Brownie.....\$3.00	Juice.....\$1.00
Garden.....\$2.00	Hamburger & Fries.....\$6.00	Bowl of Fruit.....\$1.00	Soda.....\$2.00
Caesar.....\$2.50	*substitute Sweet Potato Fries for an extra \$1.00		Milk.....\$2.50
	Club Sandwich & Coleslaw.....\$6.00		

Caleb orders a soup, club sandwich and coleslaw, bowl of fruit, and milk for lunch. He also gives an 18% tip. How much does Caleb spend on lunch in total?

\_\_\_\_\_

\_\_\_\_\_

\_\_\_\_\_

**Graphic Organizer**

4. Use the graphic organizer on page 12 to calculate your grocery shopping list.

In the first column, write down each thing you are buying. In the second column, write down how much of each thing you are buying. In the last column, write down how much each thing costs.

In the bottom part, add up all the prices. Then, find out how much sales tax you will have to pay. Go to the chapter *Calculating Sales Tax* to learn about calculating sales tax. Once you have your total cost and your tax, add it all up together to find the final total.

## Create a 5-Day Meal Plan

Get into small groups of 4-5 people. Go through your local newspapers or go online. Find local grocery store flyers and coupons. Cut out or print off all the coupons and deals.

Working as a group, make a 5-day meal plan. You have a budget of \$50 to use. Plan a complete 5-day, 3-meal-a-day plan. Use the flyers and coupons you found to help you. You must stay below budget.

Show your plan to the rest of the class. Then, listen to the other groups' plans. Once every group has shown their plan, discuss them all as a class.

- Who came the most under budget?
- Who came the closest to budget?
- Who's plan uses the most number of food items?
- Who's plan uses the fewest number of food items?
- Does anyone's plan use 1 food item for more than 1 meal?

Finally, can anyone's plan be improved? As a class, go through each groups' plan. Brainstorm ways that their plan can be made better.

As an alternative, get into small groups of 4-5 people. By yourselves, make a 5-day meal plan using the same flyers and coupons. Then, show your plan to the group.

Do the same discussion as above in your small groups. Then, pick one plan from your group, or use the improved plan your group has come up with. Show this plan to the rest of your class.

	Monday	Tuesday	Wednesday	Thursday	Friday
Breakfast					
Lunch					
Dinner					

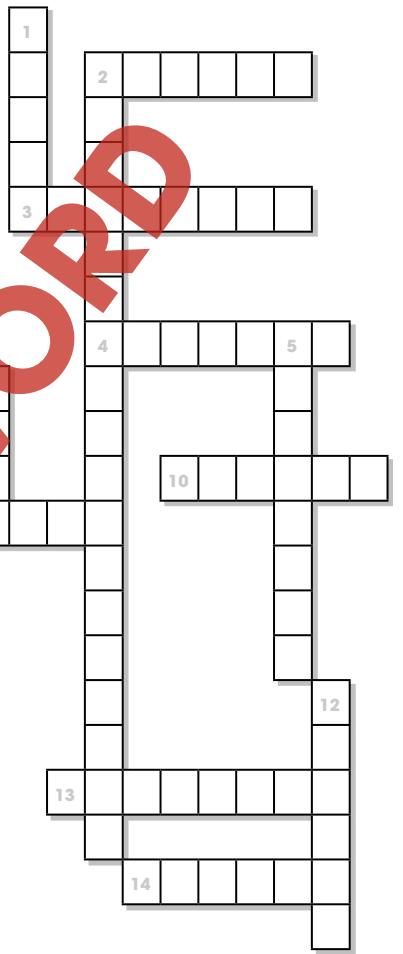
## Crossword Puzzle!

### Across

- A \_\_\_\_\_ card is good to use in an emergency.
- What you spend your money on.
- When you buy something without thinking.
- When someone steals your information and uses it.
- You can see what's on sale at grocery stores with these.
- Things like water, heat, electricity.
- Being smart about what you buy.
- The money you make from working.

### Down

- What something is worth.
- When you compare things before buying.
- \_\_\_\_\_ is paid to the government for the sale of things.
- A \_\_\_\_\_ card lets you take money out of your bank account.
- When you owe money to someone or something.
- A tax on something coming from another country.
- How much money you have to spend.



### Word List

duty	flyers	utilities
debt	fraud	income
value	impulse	sales tax
debit	budget	informed
credit	expenses	comparison shopping

## Comprehension Quiz

### Part A

Circle **TRUE** if the statement is TRUE or **FALSE** if it is FALSE.

- You can't budget for a night out at a restaurant.  
**TRUE**      **FALSE**
- A sales receipt shows what method of payment was used.  
**TRUE**      **FALSE**
- Some hidden costs are shipping and duty.  
**TRUE**      **FALSE**
- Our needs include food, shelter, and clothes.  
**TRUE**      **FALSE**
- A savings account uses a debit card to add and take money.  
**TRUE**      **FALSE**
- Comparison shop to find the best deal.  
**TRUE**      **FALSE**

### Part B

- Put a check mark (✓) next to the answer that is most correct.

a) Andrew doesn't have enough money at the cash. What thing should he put back?

- A toilet paper
- B plastic cups
- C bread
- D milk

b) What form of payment can you NOT use online?

- A Google Pay
- B PayPal
- C cash
- D credit

SUBTOTAL: /8

## Restaurant Menu

MIDDLE ST. GRILL



Open 11am - 11pm daily  
555-753-5486

### LUNCH MENU

(Served from 11:00am to 3:00pm)

**Club Sandwich** .....\$9.99  
Fresh turkey breast, bacon, cheese, tomato and lettuce on fresh bread.

**Chicken Caesar Salad** .....\$6.99  
Crisp romaine lettuce with our fresh vegetable of the day and homemade caesar dressing.

**Cheesburger** .....\$10.99  
100% Angus Beef Hamburger with Monterey Jack cheese, bacon, lettuce, tomato and pickles.

**Fettucine Alfredo** .....\$12.99  
Fettucine tossed in our homemade sauce with parmesan cheese and butter.

**Nachos** .....\$9.99  
Crispy nacho chips covered with green & red peppers, tomatoes, green onions and a blend of cheeses.

**Soup** .....\$3.99  
Find out what soups are cooking each day. Made fresh with a different flavor every day of the week.

### Side Dishes

French Fries  
Rice  
Baked Potatoes  
Grilled Vegetables  
Side Salad - Caesar or Garden



# Menu Math & Grocery Shopping Math

1. Put a check mark (✓) next to the answer that is most correct.

a) What do some grocery stores charge you extra for?

- A tax
- B bags
- C tip
- D delivery



b) What's a good thing to look at before you go out to a restaurant?

- A menu
- B décor
- C reviews
- D both A and C



2. Label the picture of a restaurant bill below.

tip	order	total	tax
-----	-------	-------	-----

# EASY MARKING

AVERY'S STEAKHOUSE	
BILL #400	TABLE #24
1 SODA	\$2.00
1 STEAK DINNER	\$16.50
1 CHOCOLATE CAKE	\$4.00
TAXES:	\$2.25
TOTAL:	\$24.75
TIP: \$4.50	
TOTAL: \$29.25	

A

B

C

D



1.

a)  B

b)  D

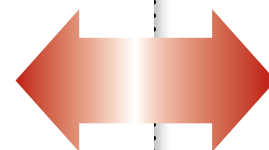
2.

a) order

b) tax

c) tip

d) total



# ANSWER KEY