

# Contents



## TEACHER GUIDE

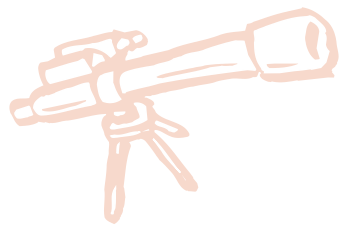
• Assessment Rubric .....	4
• How Is Our Resource Organized? .....	5
• Bloom's Taxonomy for Reading Comprehension .....	6
• Vocabulary .....	6



## STUDENT HANDOUTS

### READING COMPREHENSION

• Value of Money and Budgeting .....	
• Buying of Goods and Services .....	
• Menu Math and Grocery Shopping Math .....	
• Web Buying and Internet Fraud .....	
• Calculating Sales Tax .....	7
• Forms of Payment .....	
• Hands-on Activities .....	13
• Crossword .....	17
• Word Search .....	18
• Comprehension Quiz .....	19



## EASY MARKING™ ANSWER KEY

21

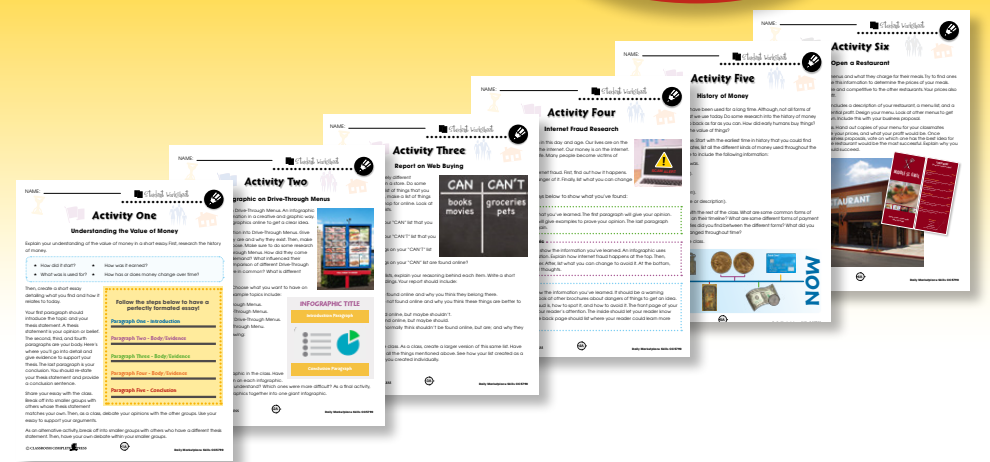
## MINI POSTERS

23

✓ **6 BONUS Activity Pages!** Additional worksheets for your students

**FREE!**

- Go to our website:  
[www.classroomcompletepress.com/bonus](http://www.classroomcompletepress.com/bonus)
- Enter item CC5790
- Enter pass code CC5790D





## Calculating Sales Tax

1. Nathan buys the following things: a bottle of water for \$1.25, a stick of gum for \$0.50, and a puzzle book for \$3.95. The sales tax is 10%. What is the sales tax for the things he buys?



2. Now you know the sales tax of the things Nathan buys. What is the total cost of everything he buys with the tax?

3. Label the picture of a receipt below.

items company	date and time method of payment	sales tax total
A	_____	
B	_____	
C	_____	
D	_____	
E	_____	
F	_____	



## Calculating Sales Tax

A sales receipt breaks down the total cost. It also gives you a record of your spending. It's a good idea to keep these receipts to help you keep track of your budget.

J-Green Grocery		Company Information
Bananas	\$5.00	Items
Frozen Chicken Breast	\$12.00	
Ice Cream	\$4.00	
Total	\$21.00	Sales Tax Total
Sales Tax	\$1.68	
Total	\$22.68	
Transaction Record		
Debit # *****2245		Method of Payment
Interac		
Date MM/DD/YYYY	Time 17:05:38	Date and Time
Auth # 22258	Ref #0222201	
Approved		

**Savings Tip**

Knowing where you spend your money will help you manage your budget.

Javier went shopping at the local grocery store. A list of things he bought is shown in the receipt. Finish the receipt with the total cost and sales tax.

J-Green Grocery	
Apples	\$4.99
Bread	\$3.99
Ice Cream	\$5.99
Lettuce	\$0.75
Cereal	\$2.99
Tomato Soup	\$1.75
Total	\$ _____
Sales Tax (12%)	\$ _____
Total	\$ _____
Transaction Record	
Debit # *****1258	
Interac	
Date MM/DD/YYYY	Time 17:05:38
Auth # 22258	Ref #0222201
Approved	



## Calculating Sales Tax

1. Fill in each blank with the correct word from the reading.

\_\_\_\_\_ tax is a paid tax to the \_\_\_\_\_ for the sale of things. This tax is a \_\_\_\_\_

\_\_\_\_\_ of the total cost of the things you are buying. The sales tax is an \_\_\_\_\_

to the cost. When \_\_\_\_\_ what you can spend on things, remember to add in \_\_\_\_\_

the sales tax.

2. Circle the word **TRUE** if the statement is TRUE or **FALSE** if it is FALSE.

a) A sales receipt is a record of your spending.  
TRUE FALSE

b) It's a good idea to throw away your sales receipts as soon as possible.  
TRUE FALSE

c) The sales tax is the same for all states and provinces.  
TRUE FALSE

d) The prices you see when shopping are not always what you'll pay.  
TRUE FALSE



## Calculating Sales Tax

3. Brooklyn went shopping at the local grocery store. A list of things she bought is shown in the receipt. Finish the receipt with the total cost and sales tax.

J-Green Grocery	
Chicken Fillets	\$11.99
Bread Crumbs	\$2.29
Buns	\$2.99
Lettuce	\$0.75
Mustard	\$1.16
Total	\$ _____
Sales Tax (8%)	\$ _____
Total	\$ _____
Transaction Record	
Debit # *****9988	
Interac	
Date MM/DD/YYYY	Time 17:05:38
Auth # 22258	Ref #0222201
Approved	

**Graphic Organizer**

4. Use the graphic organizer on page 12 to help you figure out the sales tax. Follow each step in the graphic organizer to figure out the tax and the total cost. First, find out the cost of the thing or things you are buying. Then, find out what the tax percentage is. From there, change the percentage into a decimal. Then, multiply the decimal by the cost of the things. This is your sales tax. Finally, add this sales tax to the cost of the things. This is your total cost.



## Compare your Needs and Wants with Others

Get into groups of 3-4 people. Using the chart below, have each member of your group make a list of their own needs and wants.

For each need you list, give an explanation of why you consider this a need. For each want you list, give an explanation of why you consider this a want.

Get together in your group. Compare your list with each member. Answer the following questions:

- What needs and wants do you have in common?
- What needs and wants are different?
- Are there any wants you have that are on other members' needs list?
- Are there any needs you have that are on other members' wants list?

NEEDS	WANTS

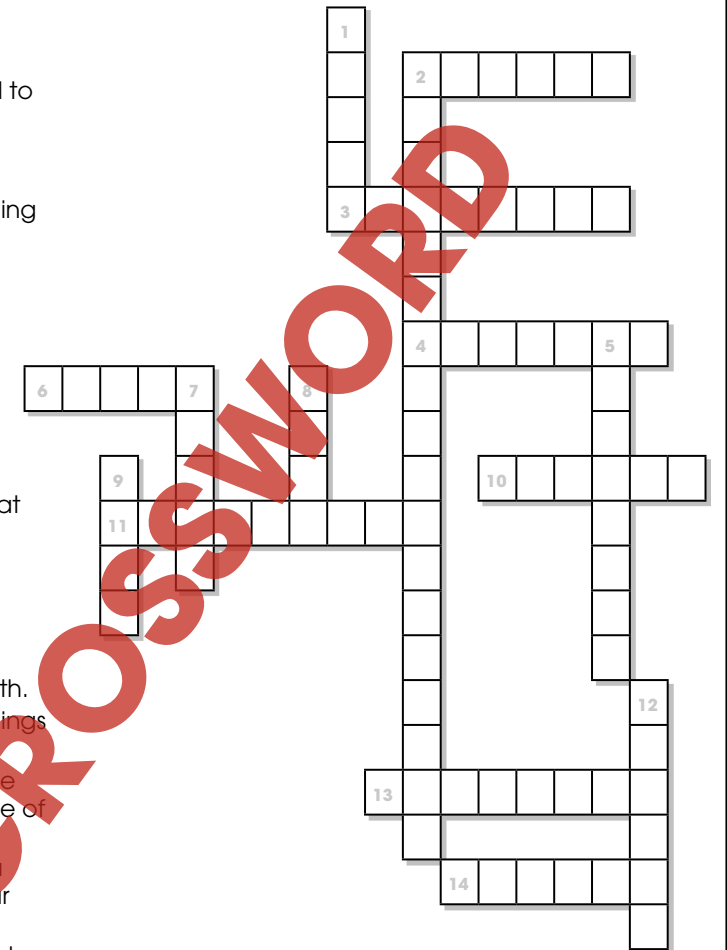
## Crossword Puzzle!

### Across

- A \_\_\_\_\_ card is good to use in an emergency.
- What you spend your money on.
- When you buy something without thinking.
- When someone steals your information and uses it.
- You can see what's on sale at grocery stores with these.
- Things like water, heat, electricity.
- Being smart about what you buy.
- The money you make from working.

### Down

- What something is worth.
- When you compare things before buying.
- \_\_\_\_\_ is paid to the government for the sale of things.
- A \_\_\_\_\_ card lets you take money out of your bank account.
- When you owe money to someone or something.
- A tax on something coming from another country.
- How much money you have to spend.



### Word List

- |        |          |                     |
|--------|----------|---------------------|
| duty   | flyers   | utilities           |
| debt   | fraud    | income              |
| value  | impulse  | sales tax           |
| debit  | budget   | informed            |
| credit | expenses | comparison shopping |

## Comprehension Quiz

### Part A

Circle **TRUE** if the statement is TRUE or **FALSE** if it is FALSE.

- You can't budget for a night out at a restaurant.  
**TRUE**      **FALSE**
- A sales receipt shows what method of payment was used.  
**TRUE**      **FALSE**
- Some hidden costs are shipping and duty.  
**TRUE**      **FALSE**
- Our needs include food, shelter, and clothes.  
**TRUE**      **FALSE**
- A savings account uses a debit card to add and take money.  
**TRUE**      **FALSE**
- Comparison shop to find the best deal.  
**TRUE**      **FALSE**

### Part B

2. Put a check mark (✓) next to the answer that is most correct.

a) Andrew doesn't have enough money at the cash. What thing should he put back?

- A toilet paper
- B plastic cups
- C bread
- D milk

b) What form of payment can you NOT use online?

- A Google Pay
- B PayPal
- C cash
- D credit

SUBTOTAL: /8

## Grocery Flyer

### Grocery Savings



**\$3.74**  
Baby Carrots



**\$4.99**  
Orange Juice



**\$7.99**  
Marble Cheese



**\$1.29** each  
Strawberry Greek Yogurt



**\$6.49**  
Salmon Fillet



Raspberries  
**2/\$4.00**



**\$.89**/lb  
Bananas



**\$2.99**  
Cheddar Cheese Slices



Frozen Pepperoni Pizza  
**\$12.99**



# Calculating Sales Tax

1. Fill in each blank with the correct word from the reading.

\_\_\_\_\_ tax is a paid tax to the \_\_\_\_\_ for the sale of things. This tax is a

a

b

\_\_\_\_\_ of the total cost of the things you are buying. The sales tax is an \_\_\_\_\_

c

d

to the cost. When \_\_\_\_\_ what you can spend on things, remember to add in

e

the sales tax.



2. **Circle** the word **TRUE** if the statement is TRUE or **Circle** the word **FALSE** if it is FALSE.

a) A sales receipt is a record of your spending.

TRUE

FALSE

b) It's a good idea to throw away your sales receipts as soon as possible.

TRUE

FALSE

c) The sales tax is the same for all states and provinces.

TRUE

FALSE

d) The prices you see when shopping are not always what you'll pay.

TRUE

FALSE

1.

- a) Sales
- b) government

c) percentage

- d) increase
- e) budgeting

2.

a) TRUE

b) FALSE

c) FALSE

d) TRUE

10

# EASY MARKING ANSWER KEY

