

Contents



TEACHER GUIDE

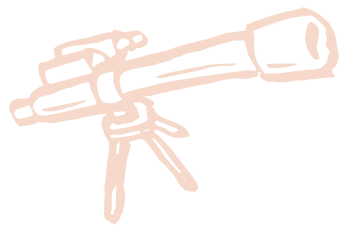
- Assessment Rubric 4
- How Is Our Resource Organized? 5
- Bloom’s Taxonomy for Reading Comprehension 6
- Vocabulary 6



STUDENT HANDOUTS

READING COMPREHENSION

- *What is Sexual Orientation?* 7
- *How is Sexual Orientation Different Than Gender?* 7
- *What is Straight, Gay and Lesbian?* 7
- *What is Bisexual, Pansexual and Asexual?* 7
- *What is LGBTQ2S+?* 7
- *History of Human Sexuality* 7
- Hands-on Activities 13
- Crossword 17
- Word Search 18
- Comprehension Quiz 19



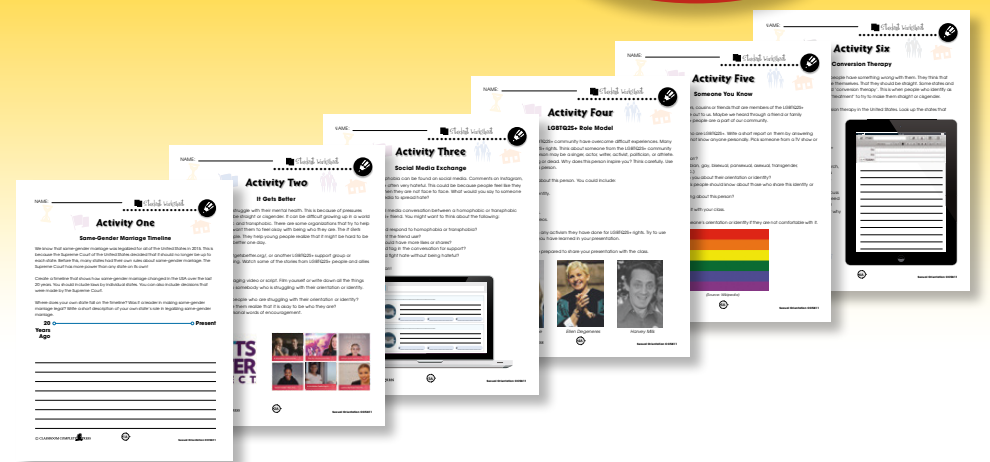
EASY MARKING™ ANSWER KEY 20

MINI POSTERS 23

✓ **6 BONUS Activity Pages!** Additional worksheets for your students

- Go to our website:
www.classroomcompletepress.com/bonus
- Enter item CC5811
- Enter pass code CC5811D

FREE!





What is Bisexual, Pansexual and Asexual?

1. Even though a woman who says she's bisexual is in a relationship with a man, she is:

a) straight b) gay c) bisexual d) lesbian

2. What does it mean to be asexual?

3. Someone who is pansexual may find themselves attracted to which of the below? (Check all that apply.)

- a) Cisgender Women
- b) Cisgender Men
- c) Transgender Women
- d) Transgender Men
- e) Non-Binary Folks
- f) Genderqueer Folks

4. Fill in the missing parts of table below.

	Sexual Orientation	Who They are Attracted To
a.	Gay	The same gender.
b.	Straight	
c.		Both men and women.
d.	Pansexual	
e.		Sexually to no one. Romantically depends on the person.



What is Bisexual, Pansexual and Asexual?

Many people don't feel like they are gay or straight. They may not feel like those terms describe who they are.

Someone who is attracted to men and women is known as **bisexual** (or 'bi'). Someone who is bi may have romantic relationships with men and women. A bi woman may be in a relationship with a man. She is still bisexual. A bisexual's orientation doesn't change because of who they are with.

Some people are attracted to people in general. They could be attracted to people of all genders! This means they could be attracted to men and women. They could also be attracted to those who identify as genderqueer or **non-binary**. These people are known as **pansexual** (or pan).

More info
Gay, Straight, Bisexual, Pansexual, Asexual. These are the most common sexual orientations. But there are others!

Bisexual	VS	Pansexual
<ul style="list-style-type: none"> 'Bi' means two, as in two genders. Attracted to both men and women. 		<ul style="list-style-type: none"> 'Pan' means all, as in all genders. Attracted to people of all gender identities.



Bisexual Pride Flag
(Source: Commons Wikimedia)



Pansexual Pride Flag
(Source: Commons Wikimedia)

What is Bisexual, Pansexual and Asexual?

1. Do you think the following statements are true or false? Circle the right answer.

- a) Bisexual and pansexual people are the same thing.
TRUE FALSE
- b) A bisexual man who is dating a woman is straight.
TRUE FALSE
- c) Someone who is asexual may be attracted to others.
TRUE FALSE
- d) An asexual person can be attracted to any gender.
TRUE FALSE
- e) A pansexual person can be attracted to a non-binary person.
TRUE FALSE

2. Sexual orientations are listed at the top. Who they might be attracted to are listed on the bottom. Draw a line between the matching pairs.

Bisexual

Pansexual

a) Cisgender Men

b) Transgender Men

c) Cisgender Women

d) Transgender Women

e) Genderqueer People

What is Bisexual, Pansexual and Asexual?

3. TV and movies often show relationships as being very sexual. How do you think this could affect the way an asexual person thinks of themselves?

Graphic Organizer

4. Use the graphic organizer on page 12 to compare myths with facts of bisexuals, pansexuals and asexuals.

A myth is an idea that many people have that is actually not true. There are many myths about bisexuals, pansexuals and asexuals. Some of these myths come from stereotypes about that group. One example of a **myth** is that 'bisexual people are confused. They are actually just straight or gay.' The **truth** is that some people are really attracted to both men and women. Bisexuality is a real orientation.

Use the web to look up myths about bisexuals, pansexuals and asexuals. Then, find out the truth about that myth. Record your findings in the graphic organizer on the next page.



Myth vs. Reality

Many times, people don't understand what it means to be LGBTQ2S+. This might be because they believe myths that they've heard. Some examples are "all lesbians like to play sports" or "bisexuals are confused". These statements aren't true. This means they're a myth.

Make a list of 5 myths that you believed before learning about sexual orientation. Then, write the reality underneath each myth. If you can't think of 5, write down common myths that people have about the LGBTQ2S+ community.

Myth #1 Myth #2 Myth #3

Reality Reality Reality

Myth #4 Myth #5

Reality Reality



Word Search

Find all of the words in the Word Search. Words are written horizontally, vertically, diagonally, and some are even written backwards.

- ally
- biological
- bisexual
- coming out
- gay
- homophobia
- LGBTQ2S
- marriage
- movement
- myth
- October
- pansexual
- pride
- sexual orientation
- spectrum
- Stonewall
- straight
- transphobia

P	B	X	M	U	R	T	C	E	P	S	J	L	W	P	Q	P	Z
V	A	I	Z	W	D	J	L	X	D	A	D	V	K	H	T	Y	M
F	B	N	S	K	X	S	E	A	T	L	O	H	T	I	C	O	
C	J	E	S	E	J	V	R	N	I	W	U	J	D	U	D	Y	
I	P	K	G	E	X	C	A	X	Y	V	J	Z	R	I	P	I	
W	D	P	W	M	X	U	X	C	H	S	T	R	A	I	G	H	T
E	L	R	S	H	C	U	A	I	F	C	O	A	L	H	Q	E	X
N	Y	I	G	R	I	O	A	L	Y	Q	R	M	N	O	Z	S	B
P	N	D	R	H	O	S	Z	B	L	H	Y	M	G	B	T	W	
X	S	E	X	U	A	L	O	R	I	E	N	T	A	T	I	O	N
Z	B	F	V	B	G	O	S	B	I	C	S	R	A	O	N	V	
F	A	J	U	P	C	A	P	K	M	T	P	A	U	M	L	E	P
L	G	K	T	Y	H	T	Y	H	G	D	N	Z	G	J	O	W	U
Q	H	D	X	M	R	Q	S	Y	O	S	N	R	H	F	G	A	F
C	O	M	I	N	G	O	U	T	P	B	L	T	E	P	I	L	G
E	L	Y	W	I	D	K	N	H	R	A	C	F	K	G	C	L	U
Q	H	O	M	O	P	H	O	B	I	A	U	Y	N	T	A	O	J
B	L	V	S	E	G	B	V	S	S	2	Q	T	B	G	L	R	Z
X	T	J	B	O	I	S	K	D	W	F	D	A	K	U	F	E	S
Q	X	V	O	A	O	N	M	A	R	R	I	A	G	E	N	M	G
T	Z	C	V	S	U	T	E	A	E	Q	T	U	S	M	Q	J	A
V	R	E	B	O	T	C	O	T	G	B	A	N	R	P	B	N	Y
T	W	U	M	O	V	E	M	E	N	T	R	F	W	K	A	U	M



Comprehension Quiz

Part C

Answer each question in full sentences.

- What is the difference between bisexuality and pansexuality? 2
- What does the umbrella term 'LGBTQ2S+' represent? 2
- Why might someone be homophobic or transphobic? 2
- What is the purpose of an LGBTQ2S+ Pride Parade or celebration? 2

LGBTQ2S+ Allies (Friends)



Ally (Friend) Pin



Support from Businesses



Ally (Friend) Sticker



Ally (Friend) Symbol

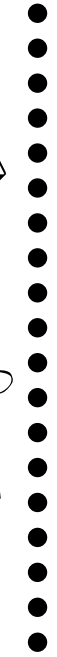


Human Rights Campaign



After You Read

NAME: _____



What is Bisexual, Pansexual and Asexual?

1. Do you think the following statements are true or false? Circle the right answer.

a) Bisexual and pansexual people are the same thing.

TRUE **FALSE**

b) A bisexual man who is dating a woman is straight.

TRUE **FALSE**

c) Someone who is asexual may be attracted to others.

TRUE **FALSE**

d) An asexual person can be attracted to any gender.

TRUE **FALSE**

e) A pansexual person can be attracted to a non-binary person.

TRUE **FALSE**



2. Sexual orientations are listed at the top. Who they might be attracted to are listed on the bottom. Draw a line between the matching pairs.

bisexual

Pansexual

a) Cisgender Men

b) Transgender Men

c) Cisgender Women

d) Transgender Women

e) Genderqueer People

1.

a) **FALSE**

b) **FALSE**

c) **TRUE**

d) **TRUE**

e) **TRUE**

2.

Bisexual
A, C

Pansexual
A, B, C, D, E

10

EASY MARKING ANSWER KEY





What is Bisexual, Pansexual and Asexual?

Many people don't feel like they are gay or straight. They may not feel like those terms describe who they are.

Someone who is attracted to men and women is known as **bisexual** (or 'bi'). Someone who is bi may have romantic relationships with men and women. A bi woman may be in a relationship with a man. She is still bisexual. A bisexual's orientation doesn't change because of who they are with.

Some people are attracted to people in general. They could be attracted to people of all genders! This means they could be attracted to men and women. They could also be attracted to those who identify as genderqueer or **non-binary**. These people are known as **pansexual** (or pan).

More info

Gay. Straight. Bisexual. Pansexual. Asexual. These are the most common sexual orientations. But there are others!

Bisexual

VS

Pansexual

- 'Bi' means two, as in two genders.
- Attracted to both men and women.

- 'Pan' means all, as in all genders.
- Attracted to people of all gender identities.



Bisexual Pride Flag
(Source: Commons Wikimedia)



Pansexual Pride Flag
(Source: Commons Wikimedia)



Myth vs. Reality

Many times, people don't understand what it means to be LGBTQ2S+. This might be because they believe myths that they've heard. Some examples are "all lesbians like to play sports" or "bisexuals are confused". These statements aren't true. This means they're a myth.

Make a list of 5 myths that you believed before learning about sexual orientation. Then, write the reality underneath each myth. If you can't think of 5, write down common myths that people have about the LGBTQ2S+ community.

Myth #1

Reality

Myth #2

Reality

Myth #3

Reality

Myth #4

Reality

Myth #5

Reality

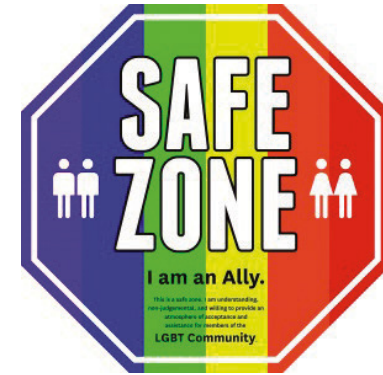
LGBTQ2S+ Allies (Friends)



Ally (Friend) Pin



Support from Businesses



Ally (Friend) Sticker



Ally (Friend) Symbol



Human Rights Campaign