

Matching

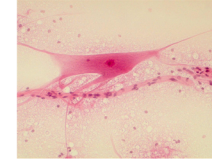
Match the word on the left with its meaning on the right. Type the number of the word next to its meaning.

1	organ	Something that is made of many different parts or units.	<input type="checkbox"/>
2	complex	A group of cells that have a similar job to do.	<input type="checkbox"/>
3	tissue	A group of tissues that have a specialized job (the heart is one of these).	<input type="checkbox"/>

/3

Reading Passage

Tissue is a group of cells that work together in the organism to do a specialized job. There are four main tissue types in the human body.



The chart on this slide and the next slide shows what each of these types of tissue does and where in the body they are found.

Tissue Type	What It Does	Examples
 epithelial tissue	<ul style="list-style-type: none"> Covers and lines the surfaces of major organs Helps keep these organs separate, in place and protected 	<ul style="list-style-type: none"> Outer layer of skin Inside lining of the digestive system
 connective tissue	<ul style="list-style-type: none"> Gives support and structure to the body 	<ul style="list-style-type: none"> Inner layers of skin, tendons and ligaments Strange as it may seem, blood is a type of connective tissue

True or False

Are the following statements TRUE or FALSE? Drag the circles to TRUE or FALSE.

- Organisms are simpler and less complex than organs.
TRUE FALSE
- Organ systems group together to create whole organisms.
TRUE FALSE
- Epithelial tissue covers the surface of our major organs.
TRUE FALSE
- There are five main types of tissue in the human body.
TRUE FALSE

/4

Marking Rubric

Name:

Marking Rubric

	Level 1	Level 2	Level 3	Level 4
Understanding Concepts	Demonstrates a limited understanding of the concepts. Requires teacher intervention. <input type="checkbox"/>	Demonstrates a basic understanding of the concepts. Requires some intervention. <input type="checkbox"/>	Demonstrates a good understanding of the concepts. Requires no intervention. <input type="checkbox"/>	Demonstrates an excellent understanding of the concepts. Requires no intervention. <input type="checkbox"/>
Responses to the text	Expresses responses to the text with limited effectiveness; inconsistently supported by proof from the text. <input type="checkbox"/>	Expresses responses to the text with some effectiveness; supported by some proof from the text. <input type="checkbox"/>	Expresses satisfactory responses to the text with some effectiveness; supported by satisfactory proof from the text. <input type="checkbox"/>	Expresses thorough responses to the text with some effectiveness; thoroughly supported by proof from the text. <input type="checkbox"/>
Analysis of Concepts	Interprets various concepts from the text with limited, unrelated details and incorrect analysis. <input type="checkbox"/>	Interprets various concepts from the text with some details but also some incorrect analysis. <input type="checkbox"/>	Interprets various concepts from the text with satisfactory details and good analysis. <input type="checkbox"/>	Interprets various concepts from the text with excellent details and thorough analysis. <input type="checkbox"/>
Application of Concepts	Demonstrates a limited ability to apply various concepts from the text to activities, discussions, and situations. <input type="checkbox"/>	Demonstrates a basic ability to apply various concepts from the text to activities, discussions, and situations. <input type="checkbox"/>	Demonstrates a satisfactory ability to apply various concepts from the text to activities, discussions, and situations. <input type="checkbox"/>	Demonstrates a strong ability to apply various concepts from the text to activities, discussions, and situations. <input type="checkbox"/>

Total Score = /64