

Definitions

Use a dictionary to look up the meanings of the words below.
Type the definitions in the boxes below.

compact

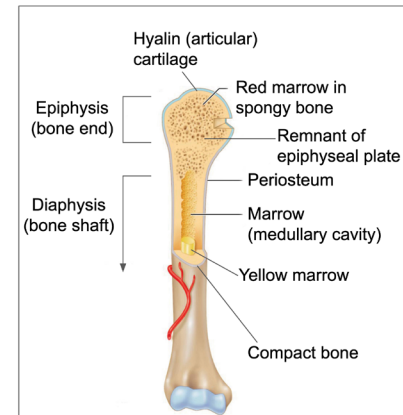
marrow

support

/3

Reading Passage

You have probably never seen any of your bones, but you can feel their hardness through your skin. It is this hardness that allows bones to do two important jobs: to give support and to give protection. The skeleton gives the body structure and support like the veins in an umbrella. Without bones humans would not be able to run, stand or even move. Bones also protect other parts of our body. For example, the brain is protected by the skull; the liver, heart and lungs are covered by the ribs; and the spinal cord is inside the back bones.



Comprehension Questions

Drag the checkmark to the correct answer for each question.

- ✓ a) Why is it important that bones are hard?
- They give our hair support.
 - They keep our muscles strong.
 - They give us support and protection.
 - Hard bones make it easier to make red blood cells.
- ✓ b) What is the skeletal system made of?
- bones and muscles
 - bones
 - bones and veins
 - bones and the brain

/2

Marking Rubric

Name: _____

	Level 1	Level 2	Level 3	Level 4
Understanding Concepts	Demonstrates a limited understanding of the concepts. Requires teacher intervention. <input type="checkbox"/>	Demonstrates a basic understanding of the concepts. Requires some intervention. <input type="checkbox"/>	Demonstrates a good understanding of the concepts. Requires no intervention. <input type="checkbox"/>	Demonstrates an excellent understanding of the concepts. Requires no intervention. <input type="checkbox"/>
Responses to the text	Expresses responses to the text with limited effectiveness; inconsistently supported by proof from the text. <input type="checkbox"/>	Expresses responses to the text with some effectiveness; supported by some proof from the text. <input type="checkbox"/>	Expresses satisfactory responses to the text with some effectiveness; supported by satisfactory proof from the text. <input type="checkbox"/>	Expresses thorough responses to the text with some effectiveness; thoroughly supported by proof from the text. <input type="checkbox"/>
Analysis of Concepts	Interprets various concepts from the text with limited, unrelated details and incorrect analysis. <input type="checkbox"/>	Interprets various concepts from the text with some details but also some incorrect analysis. <input type="checkbox"/>	Interprets various concepts from the text with satisfactory details and good analysis. <input type="checkbox"/>	Interprets various concepts from the text with excellent details and thorough analysis. <input type="checkbox"/>
Application of Concepts	Demonstrates a limited ability to apply various concepts from the text to activities, discussions, and situations. <input type="checkbox"/>	Demonstrates a basic ability to apply various concepts from the text to activities, discussions, and situations. <input type="checkbox"/>	Demonstrates a satisfactory ability to apply various concepts from the text to activities, discussions, and situations. <input type="checkbox"/>	Demonstrates a strong ability to apply various concepts from the text to activities, discussions, and situations. <input type="checkbox"/>

Total Score = /47