

Drag and Drop

Complete each sentence with a word from the list. Drag and drop the words in the boxes.

neuron

brain

tissue

spinal cord

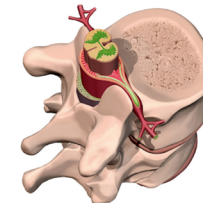
vertebra

- a) A single bone in the spine is called a _____.
- b) _____ is another word for nerve cell.
- c) The _____ carries messages to and from the brain.
- d) Our _____ is protected inside our skull.
- e) A group of cells that work together to do a specific job are called _____.

/5

Reading Passage

We have read that the nervous system is like a computer network that sends messages to every part of our body. We know the brain controls the whole system. Now we'll learn about the other two important parts of the nervous system – the spinal cord and the nerves.



The Spinal Cord

The spinal cord is a thick bundle of nerve tissue that runs down our back from the base of the brain. Information travels back and forth between the brain and the nerves in the rest of the body along the spinal cord. If our spinal cord was seriously injured, this two-way communication between our body and brain would stop. This is why our spinal cord is protected inside the bones of the spine, called vertebrae.

Comprehension Questions

Answer the question with a complete sentence. Type your answer in the box below.

Why is it important that our spinal cord is protected?

/2

Marking Rubric

Name: _____

	Level 1	Level 2	Level 3	Level 4
Understanding Concepts	Demonstrates a limited understanding of the concepts. Requires teacher intervention. <input type="checkbox"/>	Demonstrates a basic understanding of the concepts. Requires some intervention. <input type="checkbox"/>	Demonstrates a good understanding of the concepts. Requires no intervention. <input type="checkbox"/>	Demonstrates an excellent understanding of the concepts. Requires no intervention. <input type="checkbox"/>
Responses to the text	Expresses responses to the text with limited effectiveness; inconsistently supported by proof from the text. <input type="checkbox"/>	Expresses responses to the text with some effectiveness; supported by some proof from the text. <input type="checkbox"/>	Expresses satisfactory responses to the text with some effectiveness; supported by satisfactory proof from the text. <input type="checkbox"/>	Expresses thorough responses to the text with some effectiveness; thoroughly supported by proof from the text. <input type="checkbox"/>
Analysis of Concepts	Interprets various concepts from the text with limited, unrelated details and incorrect analysis. <input type="checkbox"/>	Interprets various concepts from the text with some details but also some incorrect analysis. <input type="checkbox"/>	Interprets various concepts from the text with satisfactory details and good analysis. <input type="checkbox"/>	Interprets various concepts from the text with excellent details and thorough analysis. <input type="checkbox"/>
Application of Concepts	Demonstrates a limited ability to apply various concepts from the text to activities, discussions, and situations. <input type="checkbox"/>	Demonstrates a basic ability to apply various concepts from the text to activities, discussions, and situations. <input type="checkbox"/>	Demonstrates a satisfactory ability to apply various concepts from the text to activities, discussions, and situations. <input type="checkbox"/>	Demonstrates a strong ability to apply various concepts from the text to activities, discussions, and situations. <input type="checkbox"/>

Total Score = /41