

# Matching

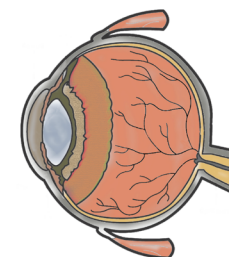
Match the word on the left with its meaning on the right. Type the number of the word next to its meaning.

- |   |         |   |  |
|---|---------|---|--|
| 1 | eyelid  | To keep something safe from harm.                   |  |
| 2 | protect | The small black hole in the center of the eye.      |  |
| 3 | blink   | We do this when we open and close our eyes quickly. |  |
| 4 | pupil   | Thin layer of skin that slides down over the eye.   |  |

/4

# Reading Passage

For many people, eyesight is one of the most important of the five senses. The information we get through our eyes helps us in many ways. Seeing a car driving toward us helps us know to move out of the way. Reading a book teaches us new things about the world. Watching a funny movie entertains us and makes us laugh. We are happy when we see the faces of the people we love.



# Comprehension Questions

Complete the paragraph with words from the list. Type your answers into the paragraph below.

- |       |       |        |
|-------|-------|--------|
| pea   | iris  | lens   |
| optic | pupil | retina |

The colored part of the eye is called the . In the center of the eye is a black part called the . Behind both of these is the . This part of the eye is very small. It is only the size of a . The  is located at the back of the eye. It is linked to the  nerve.

/6

# Marking Rubric

Name:

	Level 1	Level 2	Level 3	Level 4
<b>Understanding Concepts</b>	Demonstrates a limited understanding of the concepts. Requires teacher intervention. <input type="checkbox"/>	Demonstrates a basic understanding of the concepts. Requires some intervention. <input type="checkbox"/>	Demonstrates a good understanding of the concepts. Requires no intervention. <input type="checkbox"/>	Demonstrates an excellent understanding of the concepts. Requires no intervention. <input type="checkbox"/>
<b>Responses to the text</b>	Expresses responses to the text with limited effectiveness; inconsistently supported by proof from the text. <input type="checkbox"/>	Expresses responses to the text with some effectiveness; supported by some proof from the text. <input type="checkbox"/>	Expresses satisfactory responses to the text with some effectiveness; supported by satisfactory proof from the text. <input type="checkbox"/>	Expresses thorough responses to the text with some effectiveness; thoroughly supported by proof from the text. <input type="checkbox"/>
<b>Analysis of Concepts</b>	Interprets various concepts from the text with limited, unrelated details and incorrect analysis. <input type="checkbox"/>	Interprets various concepts from the text with some details but also some incorrect analysis. <input type="checkbox"/>	Interprets various concepts from the text with satisfactory details and good analysis. <input type="checkbox"/>	Interprets various concepts from the text with excellent details and thorough analysis. <input type="checkbox"/>
<b>Application of Concepts</b>	Demonstrates a limited ability to apply various concepts from the text to activities, discussions, and situations. <input type="checkbox"/>	Demonstrates a basic ability to apply various concepts from the text to activities, discussions, and situations. <input type="checkbox"/>	Demonstrates a satisfactory ability to apply various concepts from the text to activities, discussions, and situations. <input type="checkbox"/>	Demonstrates a strong ability to apply various concepts from the text to activities, discussions, and situations. <input type="checkbox"/>

Total Score =  /54