

# Matching

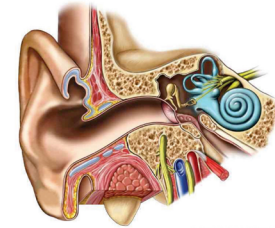
Someone has matched the words on the left to the definitions on the right. Are they correct? If yes, drag a checkmark in the circle beside each. If no, drag an X in the circle and correct the work by typing the correct answer in the blue box. /6

<input type="radio"/>	1	eardrum	→	The part of the ear that is outside our head.	<input type="checkbox"/>
<input type="radio"/>	2	middle ear	→	Thin layer of skin covering the bottom end of the ear canal.	<input type="checkbox"/>
<input type="radio"/>	3	inner ear	→	The location of the smallest bones in the body.	<input type="checkbox"/>
<input type="radio"/>	4	ear canal	→	Created in the air when things move.	<input type="checkbox"/>
<input type="radio"/>	5	sound vibrations	→	One-inch long tube that leads into the head.	<input type="checkbox"/>
<input type="radio"/>	6	outer ear	→	The deepest part of our ear.	<input type="checkbox"/>

# Reading Passage

We hear sound when movement – like a door slamming – stirs the air around us and makes vibrations in the air. These vibrations move into our ears. They travel inside our head and are turned into electrical signals. These signals are sent to our brain, and a message telling us what the sound means is made. Sound waves travel very fast. This means we understand what we hear as soon as we hear it.

The parts of the ear are divided into three main areas: the outer ear, the middle ear, and the inner ear.



# Comprehension Questions

Answer the question with a complete sentence. Type your answer in the box below.

Why is the eardrum important?

/1

# Marking Rubric

Name: \_\_\_\_\_

	Level 1	Level 2	Level 3	Level 4
<b>Understanding Concepts</b>	Demonstrates a limited understanding of the concepts. Requires teacher intervention. <input type="checkbox"/>	Demonstrates a basic understanding of the concepts. Requires some intervention. <input type="checkbox"/>	Demonstrates a good understanding of the concepts. Requires no intervention. <input type="checkbox"/>	Demonstrates an excellent understanding of the concepts. Requires no intervention. <input type="checkbox"/>
<b>Responses to the text</b>	Expresses responses to the text with limited effectiveness; inconsistently supported by proof from the text. <input type="checkbox"/>	Expresses responses to the text with some effectiveness; supported by some proof from the text. <input type="checkbox"/>	Expresses satisfactory responses to the text with some effectiveness; supported by satisfactory proof from the text. <input type="checkbox"/>	Expresses thorough responses to the text with some effectiveness; thoroughly supported by proof from the text. <input type="checkbox"/>
<b>Analysis of Concepts</b>	Interprets various concepts from the text with limited, unrelated details and incorrect analysis. <input type="checkbox"/>	Interprets various concepts from the text with some details but also some incorrect analysis. <input type="checkbox"/>	Interprets various concepts from the text with satisfactory details and good analysis. <input type="checkbox"/>	Interprets various concepts from the text with excellent details and thorough analysis. <input type="checkbox"/>
<b>Application of Concepts</b>	Demonstrates a limited ability to apply various concepts from the text to activities, discussions, and situations. <input type="checkbox"/>	Demonstrates a basic ability to apply various concepts from the text to activities, discussions, and situations. <input type="checkbox"/>	Demonstrates a satisfactory ability to apply various concepts from the text to activities, discussions, and situations. <input type="checkbox"/>	Demonstrates a strong ability to apply various concepts from the text to activities, discussions, and situations. <input type="checkbox"/>

Total Score = /47