

# Matching

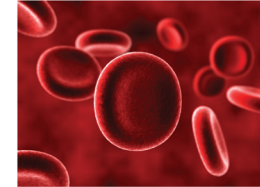
Match the word on the left with its meaning on the right. Type the number of the word next to its meaning.

1	plasma	The part of our blood that makes it clot.	<input type="checkbox"/>
2	platelet	To be protected from disease or harm.	<input type="checkbox"/>
3	clot	The biggest part of blood that is made mostly of water.	<input type="checkbox"/>
4	volume	A way that liquid is measured based on the amount of space it takes up.	<input type="checkbox"/>
5	immunity	When blood thickens it does this.	<input type="checkbox"/>

/5

# Reading Passage

Blood is the red liquid that flows through our arteries, veins and capillaries. Its job is to carry oxygen and nutrients to the cells and carry wastes away from the cells. Blood is created in marrow inside our bones. The average adult has about 10 pints of blood in their body. Blood has water in it, but is thicker and saltier than water.



## Parts of the Blood and What They Do

Blood may seem like just one thing, but it is really made of four main parts. These are red blood cells, white blood cells, plasma and platelets.

# True or False

Are the following statements TRUE or FALSE?  
Drag the circles to TRUE or FALSE.

- Platelets are the part of blood that fight germs and disease.  
TRUE FALSE
- When blood thickens it is called clotting.  
TRUE FALSE
- We have fewer white blood cells than red blood cells.  
TRUE FALSE
- The heart is a voluntary muscle.  
TRUE FALSE

/4

# Marking Rubric

Name: \_\_\_\_\_

Marking Rubric

	Level 1	Level 2	Level 3	Level 4
<b>Understanding Concepts</b>	Demonstrates a limited understanding of the concepts. Requires teacher intervention. <input type="checkbox"/>	Demonstrates a basic understanding of the concepts. Requires some intervention. <input type="checkbox"/>	Demonstrates a good understanding of the concepts. Requires no intervention. <input type="checkbox"/>	Demonstrates an excellent understanding of the concepts. Requires no intervention. <input type="checkbox"/>
<b>Responses to the text</b>	Expresses responses to the text with limited effectiveness; inconsistently supported by proof from the text. <input type="checkbox"/>	Expresses responses to the text with some effectiveness; supported by some proof from the text. <input type="checkbox"/>	Expresses satisfactory responses to the text with some effectiveness; supported by satisfactory proof from the text. <input type="checkbox"/>	Expresses thorough responses to the text with some effectiveness; thoroughly supported by proof from the text. <input type="checkbox"/>
<b>Analysis of Concepts</b>	Interprets various concepts from the text with limited, unrelated details and incorrect analysis. <input type="checkbox"/>	Interprets various concepts from the text with some details but also some incorrect analysis. <input type="checkbox"/>	Interprets various concepts from the text with satisfactory details and good analysis. <input type="checkbox"/>	Interprets various concepts from the text with excellent details and thorough analysis. <input type="checkbox"/>
<b>Application of Concepts</b>	Demonstrates a limited ability to apply various concepts from the text to activities, discussions, and situations. <input type="checkbox"/>	Demonstrates a basic ability to apply various concepts from the text to activities, discussions, and situations. <input type="checkbox"/>	Demonstrates a satisfactory ability to apply various concepts from the text to activities, discussions, and situations. <input type="checkbox"/>	Demonstrates a strong ability to apply various concepts from the text to activities, discussions, and situations. <input type="checkbox"/>

Total Score =  /51