

# Drag and Drop

Complete each sentence with a word from the list. Drag and drop the words in the boxes.

|           |          |            |
|-----------|----------|------------|
| aorta     | veins    | circulates |
| capillary | pressure |            |

- The smallest blood vessel in the body is called a \_\_\_\_\_.
- Blood pumping through our arteries causes \_\_\_\_\_ on them.
- \_\_\_\_\_ are important because they carry blood from the body back to the heart.
- Our blood \_\_\_\_\_ through our body in our blood vessels.
- The \_\_\_\_\_ is the biggest artery in the body and is attached to the heart.

/5

# Reading Passage

There are three different kinds of blood vessels in the human body. All blood vessels are tubes that carry blood. These are arteries, veins and capillaries.

| Type of Blood Vessel  | What They Do  |
|---|---|
| Arteries are the largest blood vessels. They have very tough, flexible and thick walls. The biggest artery in the body is called the aorta. It is the size of a thumb and is connected to the top of the heart. | Arteries have the job of carrying blood away from the heart. (You can remember this because artery and away both begin with "a".) One reason their walls are thick is because there is a lot of pressure on them as blood is pumped from the heart. (Pressure is the force of pushing.) |
| Veins are smaller than arteries. They also have thinner walls.  | The job of the veins is to carry blood from the body back to the heart. The walls of veins are thinner because there is less pressure on the blood going back to the heart.   |
| Capillaries are the smallest of all the blood vessels. Their walls are only one cell thick.   | Capillaries are all over our body. They go out to every cell. Their very thin walls make dropping off oxygen and picking up wastes easy.  |

# Comprehension Questions

Underline the words and ideas that describe what the circulatory system does. Drag the red line to the correct terms.

|  |                       |                     |
|--|-----------------------|---------------------|
| <hr style="border: 1px solid red; width: 100px; margin-left: 0;"/> |                       |                     |
| circulates   | helps us think        | cleans out waste    |
| brings oxygen to the cells   | pumps blood           | helps us hear sound |
| carries waste to our lungs   | helps keep us healthy |                     |

/8

# Marking Rubric

Name:

|                                | Level 1   | Level 2   | Level 3  | Level 4  |
|--------------------------------|---|---|--|--|
| <b>Understanding Concepts</b>  | Demonstrates a limited understanding of the concepts. Requires teacher intervention. <input type="checkbox"/>                               | Demonstrates a basic understanding of the concepts. Requires some intervention. <input type="checkbox"/>                                  | Demonstrates a good understanding of the concepts. Requires no intervention. <input type="checkbox"/>  | Demonstrates an excellent understanding of the concepts. Requires no intervention. <input type="checkbox"/>                                |
| <b>Responses to the text</b>   | Expresses responses to the text with limited effectiveness; inconsistently supported by proof from the text. <input type="checkbox"/>       | Expresses responses to the text with some effectiveness; supported by some proof from the text. <input type="checkbox"/>                  | Expresses satisfactory responses to the text with some effectiveness; supported by satisfactory proof from the text. <input type="checkbox"/>    | Expresses thorough responses to the text with some effectiveness; thoroughly supported by proof from the text. <input type="checkbox"/>    |
| <b>Analysis of Concepts</b>    | Interprets various concepts from the text with limited, unrelated details and incorrect analysis. <input type="checkbox"/>                  | Interprets various concepts from the text with some details but also some incorrect analysis. <input type="checkbox"/>                    | Interprets various concepts from the text with satisfactory details and good analysis. <input type="checkbox"/>                                  | Interprets various concepts from the text with excellent details and thorough analysis. <input type="checkbox"/>                           |
| <b>Application of Concepts</b> | Demonstrates a limited ability to apply various concepts from the text to activities, discussions, and situations. <input type="checkbox"/> | Demonstrates a basic ability to apply various concepts from the text to activities, discussions, and situations. <input type="checkbox"/> | Demonstrates a satisfactory ability to apply various concepts from the text to activities, discussions, and situations. <input type="checkbox"/> | Demonstrates a strong ability to apply various concepts from the text to activities, discussions, and situations. <input type="checkbox"/> |

Total Score =  /65

# Drag and Drop

Complete each sentence with a word from the list. Drag and drop the words in the boxes.

pump

oxygenated

involuntary

cardiac

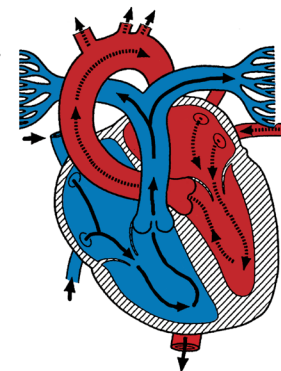
chamber

- Blood that is \_\_\_\_\_ has a lot of oxygen in it.
- A \_\_\_\_\_ is a separate space, like a room. The heart has four.
- The heart muscle works without us thinking about it so it works \_\_\_\_\_.
- \_\_\_\_\_ is another word for the heart and things related to it.
- The heart is like a \_\_\_\_\_ because it pushes blood around the body.

1/5

# Reading Passage

Your heart is only the size of your fist, but it is one of the strongest muscles in your body. That's a good thing because it has a very important job. The heart pumps blood through your whole body every moment you are alive.



## Facts About the Hardworking Heart

- Most hearts beat 75 to 80 times every minute.
- Your heart beats over 100,000 times every day.
- Blood travels around the body 1,000 times a day.
- If you live into your 70's, your heart will have beat over 3 billion times.

# Comprehension Questions

Answer the question with a complete sentence. Type your answer in the box below.

Why is it important that the heart beats without us telling it to beat?

1/2

# Marking Rubric

Name: \_\_\_\_\_

|                                | Level 1   | Level 2   | Level 3  | Level 4  |
|--------------------------------|---|---|--|--|
| <b>Understanding Concepts</b>  | Demonstrates a limited understanding of the concepts. Requires teacher intervention. <input type="checkbox"/>                               | Demonstrates a basic understanding of the concepts. Requires some intervention. <input type="checkbox"/>                                  | Demonstrates a good understanding of the concepts. Requires no intervention. <input type="checkbox"/>  | Demonstrates an excellent understanding of the concepts. Requires no intervention. <input type="checkbox"/>                                |
| <b>Responses to the text</b>   | Expresses responses to the text with limited effectiveness; inconsistently supported by proof from the text. <input type="checkbox"/>       | Expresses responses to the text with some effectiveness; supported by some proof from the text. <input type="checkbox"/>                  | Expresses satisfactory responses to the text with some effectiveness; supported by satisfactory proof from the text. <input type="checkbox"/>    | Expresses thorough responses to the text with some effectiveness; thoroughly supported by proof from the text. <input type="checkbox"/>    |
| <b>Analysis of Concepts</b>    | Interprets various concepts from the text with limited, unrelated details and incorrect analysis. <input type="checkbox"/>                  | Interprets various concepts from the text with some details but also some incorrect analysis. <input type="checkbox"/>                    | Interprets various concepts from the text with satisfactory details and good analysis. <input type="checkbox"/>                                  | Interprets various concepts from the text with excellent details and thorough analysis. <input type="checkbox"/>                           |
| <b>Application of Concepts</b> | Demonstrates a limited ability to apply various concepts from the text to activities, discussions, and situations. <input type="checkbox"/> | Demonstrates a basic ability to apply various concepts from the text to activities, discussions, and situations. <input type="checkbox"/> | Demonstrates a satisfactory ability to apply various concepts from the text to activities, discussions, and situations. <input type="checkbox"/> | Demonstrates a strong ability to apply various concepts from the text to activities, discussions, and situations. <input type="checkbox"/> |

Total Score = 1/37

# Matching

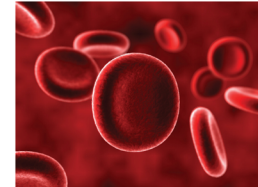
Match the word on the left with its meaning on the right. Type the number of the word next to its meaning.

|   |          |   |                          |
|---|----------|---|--------------------------|
| 1 | plasma   | The part of our blood that makes it clot.                               | <input type="checkbox"/> |
| 2 | platelet | To be protected from disease or harm.                                   | <input type="checkbox"/> |
| 3 | clot     | The biggest part of blood that is made mostly of water.                 | <input type="checkbox"/> |
| 4 | volume   | A way that liquid is measured based on the amount of space it takes up. | <input type="checkbox"/> |
| 5 | immunity | When blood thickens it does this.                                       | <input type="checkbox"/> |

/5

# Reading Passage

Blood is the red liquid that flows through our arteries, veins and capillaries. Its job is to carry oxygen and nutrients to the cells and carry wastes away from the cells. Blood is created in marrow inside our bones. The average adult has about 10 pints of blood in their body. Blood has water in it, but is thicker and saltier than water.



## Parts of the Blood and What They Do

Blood may seem like just one thing, but it is really made of four main parts. These are red blood cells, white blood cells, plasma and platelets.

# True or False

Are the following statements TRUE or FALSE? Drag the circles to TRUE or FALSE.

- Platelets are the part of blood that fight germs and disease.  
TRUE FALSE
- When blood thickens it is called clotting.  
TRUE FALSE
- We have fewer white blood cells than red blood cells.  
TRUE FALSE
- The heart is a voluntary muscle.  
TRUE FALSE

/4

# Marking Rubric

Name: \_\_\_\_\_

Marking Rubric

|                                | Level 1   | Level 2   | Level 3  | Level 4  |
|--------------------------------|---|---|--|--|
| <b>Understanding Concepts</b>  | Demonstrates a limited understanding of the concepts. Requires teacher intervention. <input type="checkbox"/>                               | Demonstrates a basic understanding of the concepts. Requires some intervention. <input type="checkbox"/>                                  | Demonstrates a good understanding of the concepts. Requires no intervention. <input type="checkbox"/>  | Demonstrates an excellent understanding of the concepts. Requires no intervention. <input type="checkbox"/>                                |
| <b>Responses to the text</b>   | Expresses responses to the text with limited effectiveness; inconsistently supported by proof from the text. <input type="checkbox"/>       | Expresses responses to the text with some effectiveness; supported by some proof from the text. <input type="checkbox"/>                  | Expresses satisfactory responses to the text with some effectiveness; supported by satisfactory proof from the text. <input type="checkbox"/>    | Expresses thorough responses to the text with some effectiveness; thoroughly supported by proof from the text. <input type="checkbox"/>    |
| <b>Analysis of Concepts</b>    | Interprets various concepts from the text with limited, unrelated details and incorrect analysis. <input type="checkbox"/>                  | Interprets various concepts from the text with some details but also some incorrect analysis. <input type="checkbox"/>                    | Interprets various concepts from the text with satisfactory details and good analysis. <input type="checkbox"/>                                  | Interprets various concepts from the text with excellent details and thorough analysis. <input type="checkbox"/>                           |
| <b>Application of Concepts</b> | Demonstrates a limited ability to apply various concepts from the text to activities, discussions, and situations. <input type="checkbox"/> | Demonstrates a basic ability to apply various concepts from the text to activities, discussions, and situations. <input type="checkbox"/> | Demonstrates a satisfactory ability to apply various concepts from the text to activities, discussions, and situations. <input type="checkbox"/> | Demonstrates a strong ability to apply various concepts from the text to activities, discussions, and situations. <input type="checkbox"/> |

Total Score = /51

# Definitions

Use a dictionary to look up the meanings of the words below. Type the definitions in the boxes below.

saliva

secrete

pouch

/3

# Reading Passage

How Do the Mouth and Stomach Work to Begin Digestion?

The mouth is where digestion begins. When we take a bite of food we chew it into small pieces. Our teeth bite, grind and rip the food. The muscles of the mouth and tongue move the food and mix it with the saliva in our mouth. Saliva is a watery liquid that our mouth secretes to help digestion. One of the most important jobs of saliva is to start to break starchy food (like pasta) down into simple sugars. For the best digestion, food needs to be chewed many times.

/3

How do the parts of our mouth help food to digest?

# Comprehension Questions

Complete the paragraph with words from the list. Type your answers into the paragraph below.

- teeth
- intestine
- tongue
- four
- mouth

There are  main parts to the digestive system. These are the mouth, the stomach, and the large and small s. Digestion begins in the . Our  rip and chew our food. Our  moves the food around in our mouth.

/5

# Marking Rubric

Name:

Marking Rubric

|                                  | Level 1   | Level 2   | Level 3  | Level 4  |
|----------------------------------|---|---|--|--|
| <b>Understanding Concepts</b> ✓  | Demonstrates a limited understanding of the concepts. Requires teacher intervention. <input type="checkbox"/>                               | Demonstrates a basic understanding of the concepts. Requires some intervention. <input type="checkbox"/>                                  | Demonstrates a good understanding of the concepts. Requires no intervention. <input type="checkbox"/>  | Demonstrates an excellent understanding of the concepts. Requires no intervention. <input type="checkbox"/>                                |
| <b>Responses to the text</b> ✓   | Expresses responses to the text with limited effectiveness; inconsistently supported by proof from the text. <input type="checkbox"/>       | Expresses responses to the text with some effectiveness; supported by some proof from the text. <input type="checkbox"/>                  | Expresses satisfactory responses to the text with some effectiveness; supported by satisfactory proof from the text. <input type="checkbox"/>    | Expresses thorough responses to the text with some effectiveness; thoroughly supported by proof from the text. <input type="checkbox"/>    |
| <b>Analysis of Concepts</b> ✓    | Interprets various concepts from the text with limited, unrelated details and incorrect analysis. <input type="checkbox"/>                  | Interprets various concepts from the text with some details but also some incorrect analysis. <input type="checkbox"/>                    | Interprets various concepts from the text with satisfactory details and good analysis. <input type="checkbox"/>                                  | Interprets various concepts from the text with excellent details and thorough analysis. <input type="checkbox"/>                           |
| <b>Application of Concepts</b> ✓ | Demonstrates a limited ability to apply various concepts from the text to activities, discussions, and situations. <input type="checkbox"/> | Demonstrates a basic ability to apply various concepts from the text to activities, discussions, and situations. <input type="checkbox"/> | Demonstrates a satisfactory ability to apply various concepts from the text to activities, discussions, and situations. <input type="checkbox"/> | Demonstrates a strong ability to apply various concepts from the text to activities, discussions, and situations. <input type="checkbox"/> |

Total Score =  /57

# Definitions

📖 Use a dictionary to look up the meanings of the words below.  
Type the definitions in the boxes below.

diameter

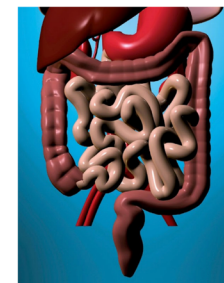
absorb

enzymes

/3

# Reading Passage

📖 After several hours in the stomach, food is only partly digested. Next, it moves into the small intestine. The small intestine gets its name because it is a tube that is small around (small in diameter). But the small intestine is also very long. It is close to twenty-five feet long! It fits in our body because it is very tightly coiled (like a curled up snake that is sleeping).



# Comprehension Questions

📖 Complete the paragraph with words from the list. Type your answers into the paragraph below.

- liver                      enzymes                      nutrients

The small intestine is where most of the  are taken from our food.

are special chemicals from the pancreas and the .

They help us digest our food.

/3

# Marking Rubric

Name:

|                                  | Level 1   | Level 2   | Level 3  | Level 4  |
|----------------------------------|---|---|--|--|
| <b>Understanding Concepts</b> ✓  | Demonstrates a limited understanding of the concepts. Requires teacher intervention. <input type="checkbox"/>                               | Demonstrates a basic understanding of the concepts. Requires some intervention. <input type="checkbox"/>                                  | Demonstrates a good understanding of the concepts. Requires no intervention. <input type="checkbox"/>  | Demonstrates an excellent understanding of the concepts. Requires no intervention. <input type="checkbox"/>                                |
| <b>Responses to the text</b> ✓   | Expresses responses to the text with limited effectiveness; inconsistently supported by proof from the text. <input type="checkbox"/>       | Expresses responses to the text with some effectiveness; supported by some proof from the text. <input type="checkbox"/>                  | Expresses satisfactory responses to the text with some effectiveness; supported by satisfactory proof from the text. <input type="checkbox"/>    | Expresses thorough responses to the text with some effectiveness; thoroughly supported by proof from the text. <input type="checkbox"/>    |
| <b>Analysis of Concepts</b> ✓    | Interprets various concepts from the text with limited, unrelated details and incorrect analysis. <input type="checkbox"/>                  | Interprets various concepts from the text with some details but also some incorrect analysis. <input type="checkbox"/>                    | Interprets various concepts from the text with satisfactory details and good analysis. <input type="checkbox"/>                                  | Interprets various concepts from the text with excellent details and thorough analysis. <input type="checkbox"/>                           |
| <b>Application of Concepts</b> ✓ | Demonstrates a limited ability to apply various concepts from the text to activities, discussions, and situations. <input type="checkbox"/> | Demonstrates a basic ability to apply various concepts from the text to activities, discussions, and situations. <input type="checkbox"/> | Demonstrates a satisfactory ability to apply various concepts from the text to activities, discussions, and situations. <input type="checkbox"/> | Demonstrates a strong ability to apply various concepts from the text to activities, discussions, and situations. <input type="checkbox"/> |

Total Score =  /34

# Definitions

Use a dictionary to look up the meanings of the words below. Then type each word in a sentence that shows its meaning.

toxic

poison

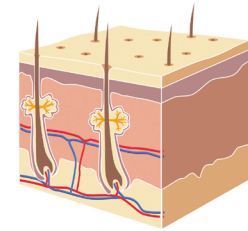
pores

/3

# Reading Passage

Our organ systems make many things we need to live. Did you know that they also create waste that is toxic to our body?

The excretory system keeps our body clean of this waste. If it wasn't for this important system, this waste would poison us and we would die. The main organs of the excretory system are the kidneys and large intestine. We will learn more about them in the next section. Three other important organs of the excretory system are the skin, the lungs and the liver.



# True or False

Are the following statements TRUE or FALSE? Drag the circles to TRUE or FALSE.



The skin is the largest organ of the body.

TRUE FALSE



The excretory system helps our body use its waste.

TRUE FALSE



The large intestine and kidneys are two important parts of the excretory system.

TRUE FALSE

/3

# Marking Rubric

Name:

Marking Rubric

|                                | Level 1   | Level 2   | Level 3  | Level 4  |
|--------------------------------|---|---|--|--|
| <b>Understanding Concepts</b>  | Demonstrates a limited understanding of the concepts. Requires teacher intervention. <input type="checkbox"/>                               | Demonstrates a basic understanding of the concepts. Requires some intervention. <input type="checkbox"/>                                  | Demonstrates a good understanding of the concepts. Requires no intervention. <input type="checkbox"/>  | Demonstrates an excellent understanding of the concepts. Requires no intervention. <input type="checkbox"/>                                |
| <b>Responses to the text</b>   | Expresses responses to the text with limited effectiveness; inconsistently supported by proof from the text. <input type="checkbox"/>       | Expresses responses to the text with some effectiveness; supported by some proof from the text. <input type="checkbox"/>                  | Expresses satisfactory responses to the text with some effectiveness; supported by satisfactory proof from the text. <input type="checkbox"/>    | Expresses thorough responses to the text with some effectiveness; thoroughly supported by proof from the text. <input type="checkbox"/>    |
| <b>Analysis of Concepts</b>    | Interprets various concepts from the text with limited, unrelated details and incorrect analysis. <input type="checkbox"/>                  | Interprets various concepts from the text with some details but also some incorrect analysis. <input type="checkbox"/>                    | Interprets various concepts from the text with satisfactory details and good analysis. <input type="checkbox"/>                                  | Interprets various concepts from the text with excellent details and thorough analysis. <input type="checkbox"/>                           |
| <b>Application of Concepts</b> | Demonstrates a limited ability to apply various concepts from the text to activities, discussions, and situations. <input type="checkbox"/> | Demonstrates a basic ability to apply various concepts from the text to activities, discussions, and situations. <input type="checkbox"/> | Demonstrates a satisfactory ability to apply various concepts from the text to activities, discussions, and situations. <input type="checkbox"/> | Demonstrates a strong ability to apply various concepts from the text to activities, discussions, and situations. <input type="checkbox"/> |

Total Score =  /48



# Matching

Match the word on the left with its meaning on the right. Type the number of the word next to its meaning.

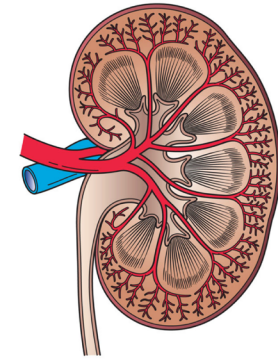
|   |          |                                       |                          |
|---|----------|---------------------------------------|--------------------------|
| 1 | colon    | Dampness or wetness.                  | <input type="checkbox"/> |
| 2 | abdomen  | The main liquid waste from our body.  | <input type="checkbox"/> |
| 3 | urine    | A tiny piece or bit.                  | <input type="checkbox"/> |
| 4 | particle | Another name for the large intestine. | <input type="checkbox"/> |
| 5 | moisture | The middle part of our body.          | <input type="checkbox"/> |

/5

# Reading Passage

The most important excretory organs in the body are the kidneys and the large intestine. We have two kidneys. They are small, dark red organs each about four inches long. If you have ever seen a kidney bean, you know the shape and color of your kidneys. Each kidney is located in the lower back on either side of our spine.

The large intestine is also called the colon. It is about five feet long. It is in the lower abdomen. Its shape is that of an upside-down "U".



# Comprehension Questions

Complete the paragraph with words from the list. Type your answers into the paragraph below.

|        |           |       |
|--------|-----------|-------|
| cells  | kidneys   | water |
| liquid | particles |       |

Our two  are important for removing waste. They remove  waste.  goes through the millions of tubes in the kidneys. Here, some water is cleaned and sent back to the . What is left has waste  in it.

/5

# Marking Rubric

Name:

Marking Rubric

|                                | Level 1   | Level 2   | Level 3  | Level 4  |
|--------------------------------|---|---|--|--|
| <b>Understanding Concepts</b>  | Demonstrates a limited understanding of the concepts. Requires teacher intervention. <input type="checkbox"/>                               | Demonstrates a basic understanding of the concepts. Requires some intervention. <input type="checkbox"/>                                  | Demonstrates a good understanding of the concepts. Requires no intervention. <input type="checkbox"/>  | Demonstrates an excellent understanding of the concepts. Requires no intervention. <input type="checkbox"/>                                |
| <b>Responses to the text</b>   | Expresses responses to the text with limited effectiveness; inconsistently supported by proof from the text. <input type="checkbox"/>       | Expresses responses to the text with some effectiveness; supported by some proof from the text. <input type="checkbox"/>                  | Expresses satisfactory responses to the text with some effectiveness; supported by satisfactory proof from the text. <input type="checkbox"/>    | Expresses thorough responses to the text with some effectiveness; thoroughly supported by proof from the text. <input type="checkbox"/>    |
| <b>Analysis of Concepts</b>    | Interprets various concepts from the text with limited, unrelated details and incorrect analysis. <input type="checkbox"/>                  | Interprets various concepts from the text with some details but also some incorrect analysis. <input type="checkbox"/>                    | Interprets various concepts from the text with satisfactory details and good analysis. <input type="checkbox"/>                                  | Interprets various concepts from the text with excellent details and thorough analysis. <input type="checkbox"/>                           |
| <b>Application of Concepts</b> | Demonstrates a limited ability to apply various concepts from the text to activities, discussions, and situations. <input type="checkbox"/> | Demonstrates a basic ability to apply various concepts from the text to activities, discussions, and situations. <input type="checkbox"/> | Demonstrates a satisfactory ability to apply various concepts from the text to activities, discussions, and situations. <input type="checkbox"/> | Demonstrates a strong ability to apply various concepts from the text to activities, discussions, and situations. <input type="checkbox"/> |

Total Score =  /44

# Definitions

Use a dictionary to look up the meanings of the words below. Write the definitions in the boxes below.

species

hormone

fetus

/3

# Reading Passage

The human reproductive system is important for one good reason: it creates new people. Not every person has children, but some people must have children for our species to survive into the future. The way humans reproduce is called sexual reproduction.



The reproductive system has three main jobs:

1. To create egg and sperm cells.
2. To grow the developing baby.
3. To make chemicals called hormones.

# Comprehension Questions

Complete the paragraph with words from the list. Type your answers into the paragraph below.

|            |             |       |
|------------|-------------|-------|
| fertilized | nine months | sperm |
| small      | human       | egg   |

Our reproductive system creates new  life. The female body produces an  cell. It is  by the male's  cell. These two cells join together but are still very . They grow to become a newborn baby in .

/6

# Marking Rubric

Name:

Marking Rubric

|                                | Level 1   | Level 2   | Level 3  | Level 4  |
|--------------------------------|---|---|--|--|
| <b>Understanding Concepts</b>  | Demonstrates a limited understanding of the concepts. Requires teacher intervention. <input type="checkbox"/>                               | Demonstrates a basic understanding of the concepts. Requires some intervention. <input type="checkbox"/>                                  | Demonstrates a good understanding of the concepts. Requires no intervention. <input type="checkbox"/>  | Demonstrates an excellent understanding of the concepts. Requires no intervention. <input type="checkbox"/>                                |
| <b>Responses to the text</b>   | Expresses responses to the text with limited effectiveness; inconsistently supported by proof from the text. <input type="checkbox"/>       | Expresses responses to the text with some effectiveness; supported by some proof from the text. <input type="checkbox"/>                  | Expresses satisfactory responses to the text with some effectiveness; supported by satisfactory proof from the text. <input type="checkbox"/>    | Expresses thorough responses to the text with some effectiveness; thoroughly supported by proof from the text. <input type="checkbox"/>    |
| <b>Analysis of Concepts</b>    | Interprets various concepts from the text with limited, unrelated details and incorrect analysis. <input type="checkbox"/>                  | Interprets various concepts from the text with some details but also some incorrect analysis. <input type="checkbox"/>                    | Interprets various concepts from the text with satisfactory details and good analysis. <input type="checkbox"/>                                  | Interprets various concepts from the text with excellent details and thorough analysis. <input type="checkbox"/>                           |
| <b>Application of Concepts</b> | Demonstrates a limited ability to apply various concepts from the text to activities, discussions, and situations. <input type="checkbox"/> | Demonstrates a basic ability to apply various concepts from the text to activities, discussions, and situations. <input type="checkbox"/> | Demonstrates a satisfactory ability to apply various concepts from the text to activities, discussions, and situations. <input type="checkbox"/> | Demonstrates a strong ability to apply various concepts from the text to activities, discussions, and situations. <input type="checkbox"/> |

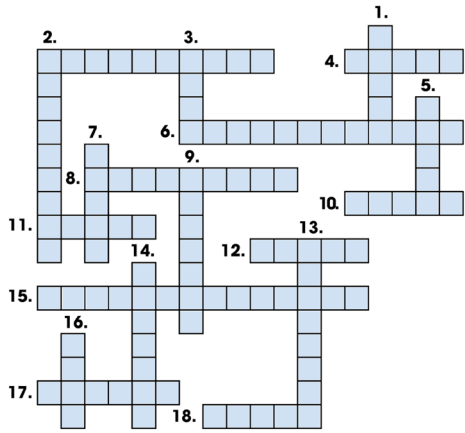
Total Score =  /44



# Crossword

### Word List

- acid
- aorta
- bladder
- chemicals
- circulates
- colon
- deoxygenated
- esophagus
- filter
- heart
- hormone
- lungs
- pores
- skin
- small intestine
- thickens
- veins
- water
- white



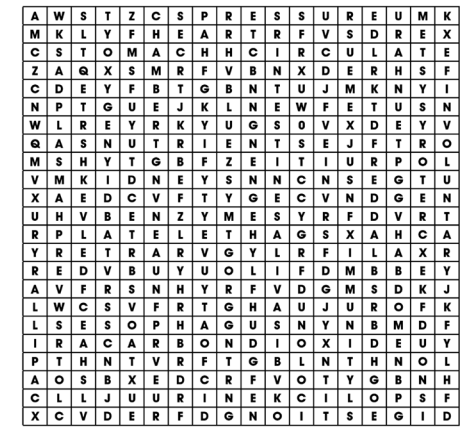
/19  
CCP6122

# Word Search

Drag the red circles

over top of the words  
you find in the word  
search.

/28  
CCP6122



# Comprehension Quiz

## Comprehension Quiz

Are the following statements TRUE or FALSE? Drag a circle to the answer.

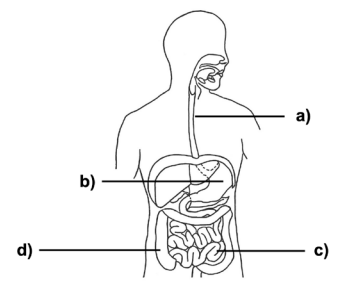
- Blood circulates through blood vessels and goes to all parts of the body.  
TRUE FALSE
- The largest artery is the aorta, located in the lungs.  
TRUE FALSE
- The heart is a pump made of voluntary muscle tissue.  
TRUE FALSE
- Our stomach is not very strong. This is why we can get sick to our stomach.  
TRUE FALSE

/4  
CCP6122

# Comprehension Quiz

Label the parts of the digestive system below. Use the words in the list.  
Type your answers in the boxes below.

- stomach
- esophagus
- large intestine
- small intestine



a)

b)

c)

d)

/4  
CCP6122