

Math and Number Puzzles

A Brain Twisters and Teasers Packet

Author: Jennifer Henson
Editor: Jonathan Gross
Illustrator: Ken Benner

ELE90/103503

ISBN: 978-0-7877-2083-4

Release Date 2015

Copyright © 2010 Lorenz Educational Press, a Lorenz company.

P. O. Box 802

Dayton, OH 45401-0802

www.LorenzEducationalPress.com

All rights reserved.

The pages in this packet were originally published in
Brain Twisters and Teasers, (ELE90/1035).

Permission to print or photocopy the student activities in this book is hereby granted to one teacher as part of the purchase price. This permission may only be used to provide copies for this teacher's specific classroom setting. This permission may not be transferred, sold, or given to any additional or subsequent user of this product. Thank you for respecting copyright laws.

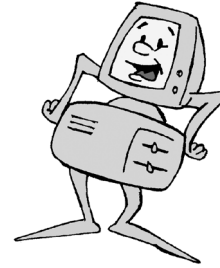


Lorenz Educational Press
Milliken Publishing Company
Teaching and Learning Company
Show What You Know® Publishing
LEP interactive

Computer Chaos



Mindy's computer isn't working correctly. It does not show the symbols used in calculations. Can you figure out what calculations her computer is using for each set of numbers? The first one has been done for you.



Problems		Answer
1.	$9 \blacklozenge 6 = -3$ $4 \blacklozenge 9 = 5$ $2 \blacklozenge 2 = 0$ $18 \blacklozenge 21 = 3$	$6 - 9 = -3$ $9 - 4 = 5$ $2 - 2 = 0$ $21 - 18 = 3$
2.	$4 \blacklozenge 3 = 12$ $6 \blacklozenge 5 = 30$ $2 \blacklozenge 2 = 4$ $1 \blacklozenge 7 = 7$	
3.	$4 \blacklozenge 20 = 5$ $6 \blacklozenge 36 = 6$ $2 \blacklozenge 12 = 6$ $2 \blacklozenge 20 = 10$	
4.	$2 \blacklozenge 0 \blacklozenge 2 = 2$ $2 \blacklozenge 1 \blacklozenge 4 = 6$ $2 \blacklozenge 3 \blacklozenge 4 = 10$ $3 \blacklozenge 4 \blacklozenge 6 = 18$	



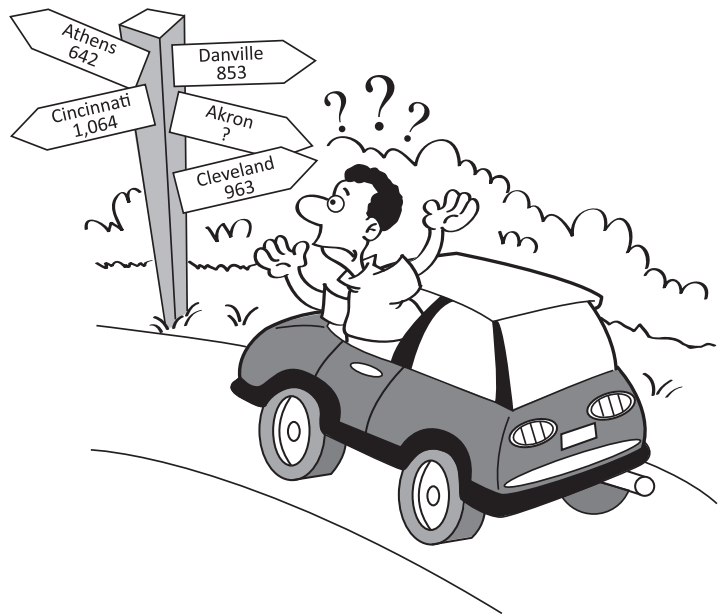
Where in the World?



These drivers aren't going to get much help from these road signs! However, there is some logic to the numbers. To solve these problems, you will need to count the total number of letters in each city, as well as the total number of consonants and vowels. Next, you have to arrange these totals in a certain order. What's the proper order: is it total number of letters, vowels, consonants; total number of vowels, letters, consonants; or another arrangement? Once you've figured out the correct answer, write your answers on the blank lines. Happy travels!

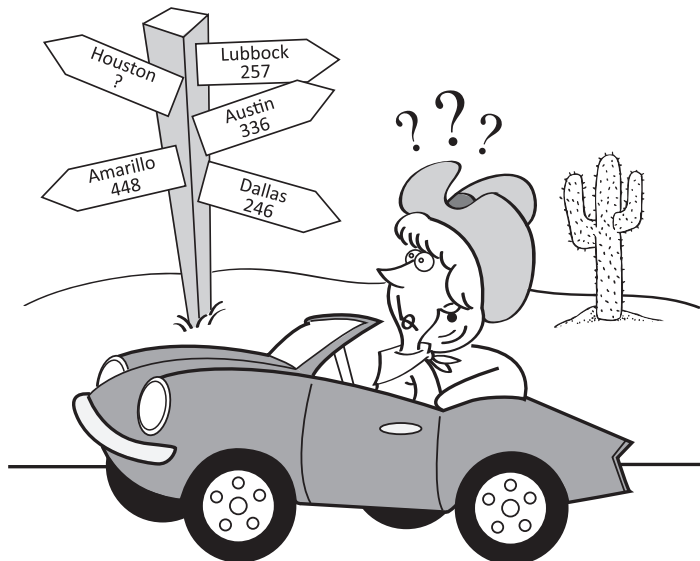
Ohio

Athens	642
Cincinnati	1,064
Danville	853
Akron	_____
Cleveland	963



Texas

Lubbock	257
Austin	336
Dallas	246
Houston	_____
Amarillo	448



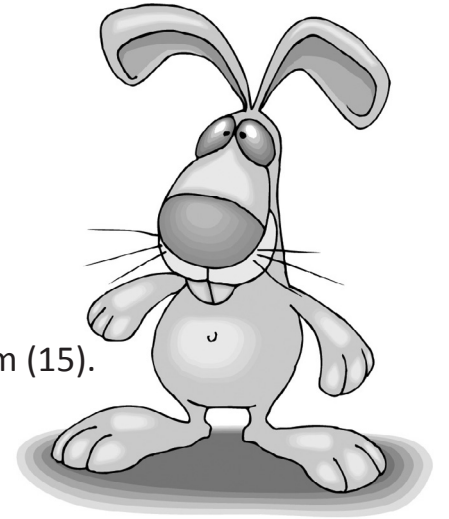
Magic Number 15



The numbers in this puzzle add up to 15 whether they are added upward, downward, forward, backward, or diagonally. Add the missing numbers to reach the magic number 15.

Clues

- The missing numbers are whole numbers between 1 and 9.
- Each whole number under 15 is used only once.
- The numbers in each row add up to totals to the right (15).
- The numbers in each column add up to the totals along the bottom (15).
- The shaded diagonal lines also add up the totals shown (15).



15	15	15	15	15
15	6		2	15
15	1			15
15		3	4	15
15	15	15	15	15

