

ART A LA CARTE: Part I - Nature's Beauty

UNIT OVERVIEW

Finally, an art unit that utilizes a method of presenting lessons which will allow even the most uncertain individual to have success with art. Each lesson details step-by-step directions involving easy to draw shapes such as circles, ovals, letter shapes and clouds to create an image. The lessons are presented just as they are taught and real-sized teacher samples are posted to demonstrate how to draw each shape and combine them to create the final image.

The lessons are set up so that they can be drawn by an individual directly from the unit or, by reproducing each step onto pages, an entire class can be guided through the lesson. One preferred strategy is for the teacher to demonstrate the steps with students following along creating a "rough draft". This allows students to make mistakes and practice the various techniques insuring a better final product.

Although each lesson stands on its own, they are best taught in order as several techniques are explored, and evolve in difficulty.

STUDENT PROJECTS

1. **Roses, Roses, Roses**
2. **Cherry Blossom Spring**
3. **Peony**
4. **Sea Waves And Killer Whales**
5. **Pandamania**
6. **Tarantulas**
7. **Dragonfly**
8. **Harlequin Bug**
9. **Amazing Amazon Tree Snake**
10. **Red-Eyed Tree Frog**
11. **"Articulated" Lizard**
12. **Barn Owl**
13. **Hummingbirds**



EVALUATION - PORTFOLIO

Name _____ Date: _____

- following steps and directions /10
- correct use of materials /10
- varied use of techniques (colour blending, feathering, use of line, shading, use of dots, background, fine details, mixed medium, colour overlay, circular colouring) /10
- work shows care and effort /20
- doing one's best /10
- on task behaviour /10
- completion of tasks /10
- outstanding products /10
- positive attitude /10

Total: _____ /100

Comments:

PROJECT #3 - PEONY

Materials:

teacher samples (pictures of peonies, as well as the teacher's own rendition of this lesson); pencils; black felt pens, fine or medium tip (if using paint, use permanent felt tip pens); pink, peach or red felt pens; pencil crayons or water colour; oval mat drawing paper or painting paper; pink, peach, red, black and green construction paper for matting works onto; glue; scissors.

Method:

Step #1 In pencil, draw a "lumpy smile."



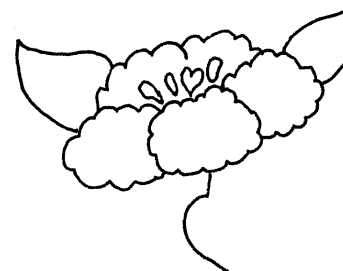
Step #2 Turn the smile into three "beards." The centre one is to be drawn first.



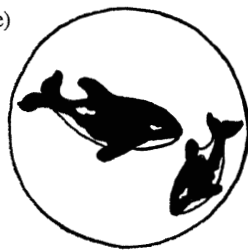
Step #3 Add a cloud behind the smile.



Step #4 Draw five "beans" in the cup area. Add two leaves - one larger leaf to the left of the flower head with a second smaller leaf to the right. Draw an upside-down question mark, a finger length long, starting at the center petal.



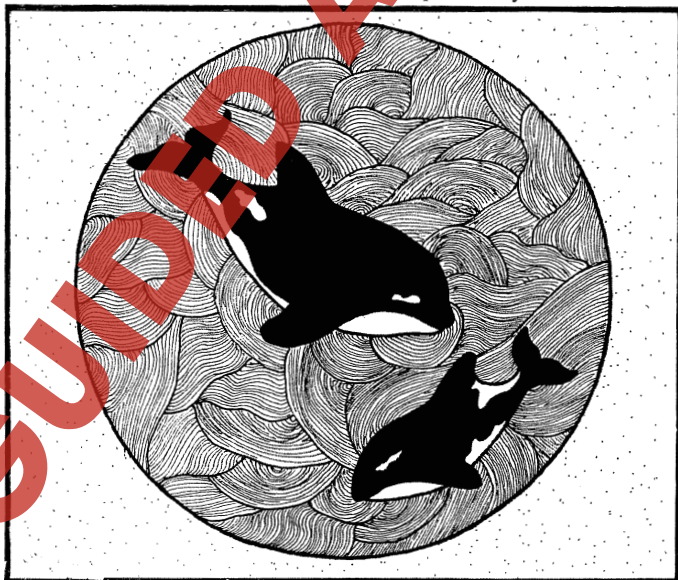
Step #2 Demonstrate how to draw the black and white "patches" inside the whales using pencil. The black "patches" are then coloured with black felt pen. (Pencil crayon can also be used but tends to smudge)



Step #3 Demonstrate how to draw in the fine "wave" lines using blue or green or a combination of the two colours. Ballpoint pen can be used for this. Felt pen is also good but should be fine-tip. Pencil crayon will also work well, but the waves will be softer in tone. Discuss how one can alternate the tones or change the line direction to create a specific effect.



Step #4 When done, paste the cut out rounds onto a complementary colour of construction paper.



Step #4 Draw two large paw shapes just below the arms, allowing for a narrow space between each.

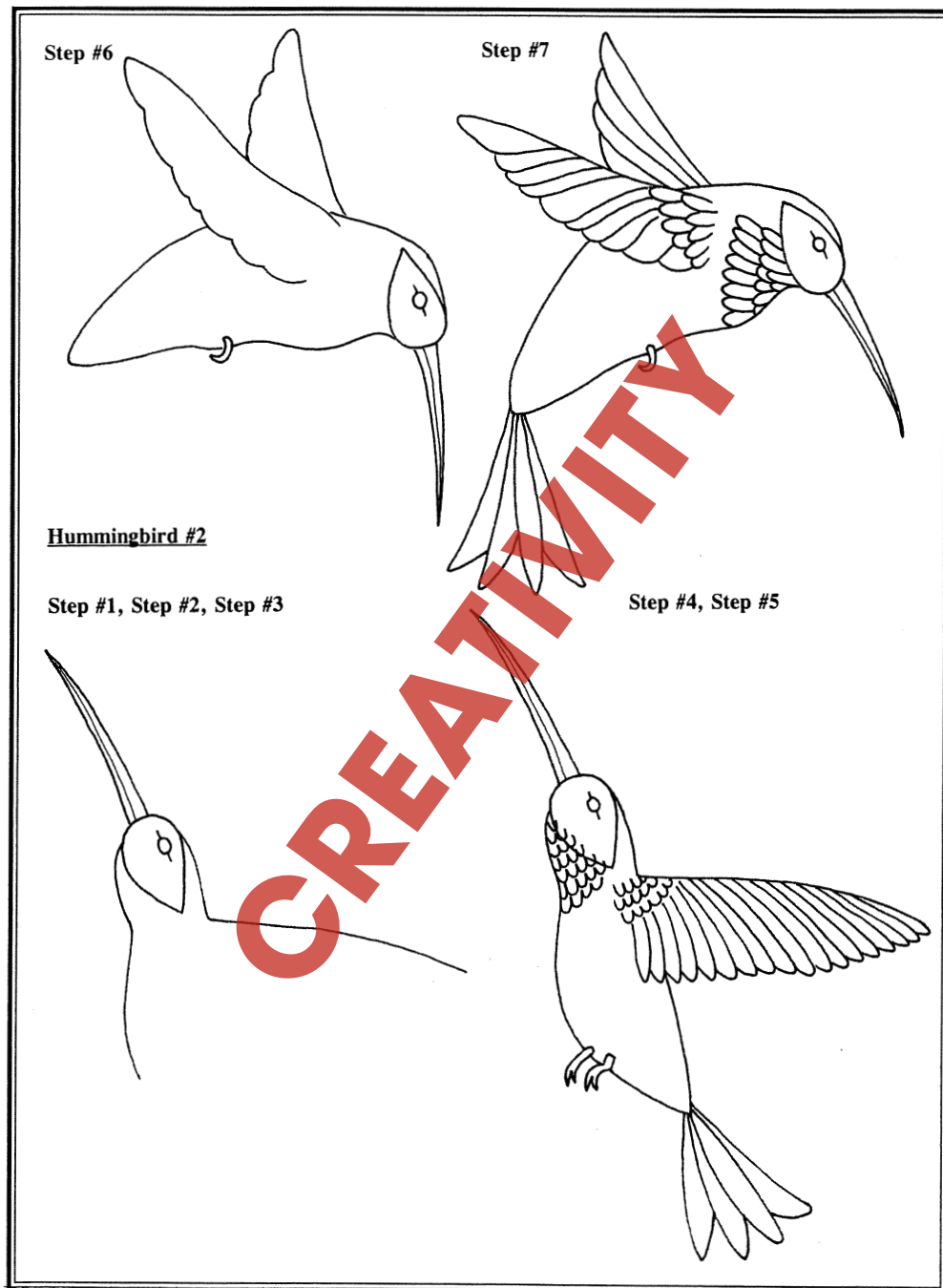
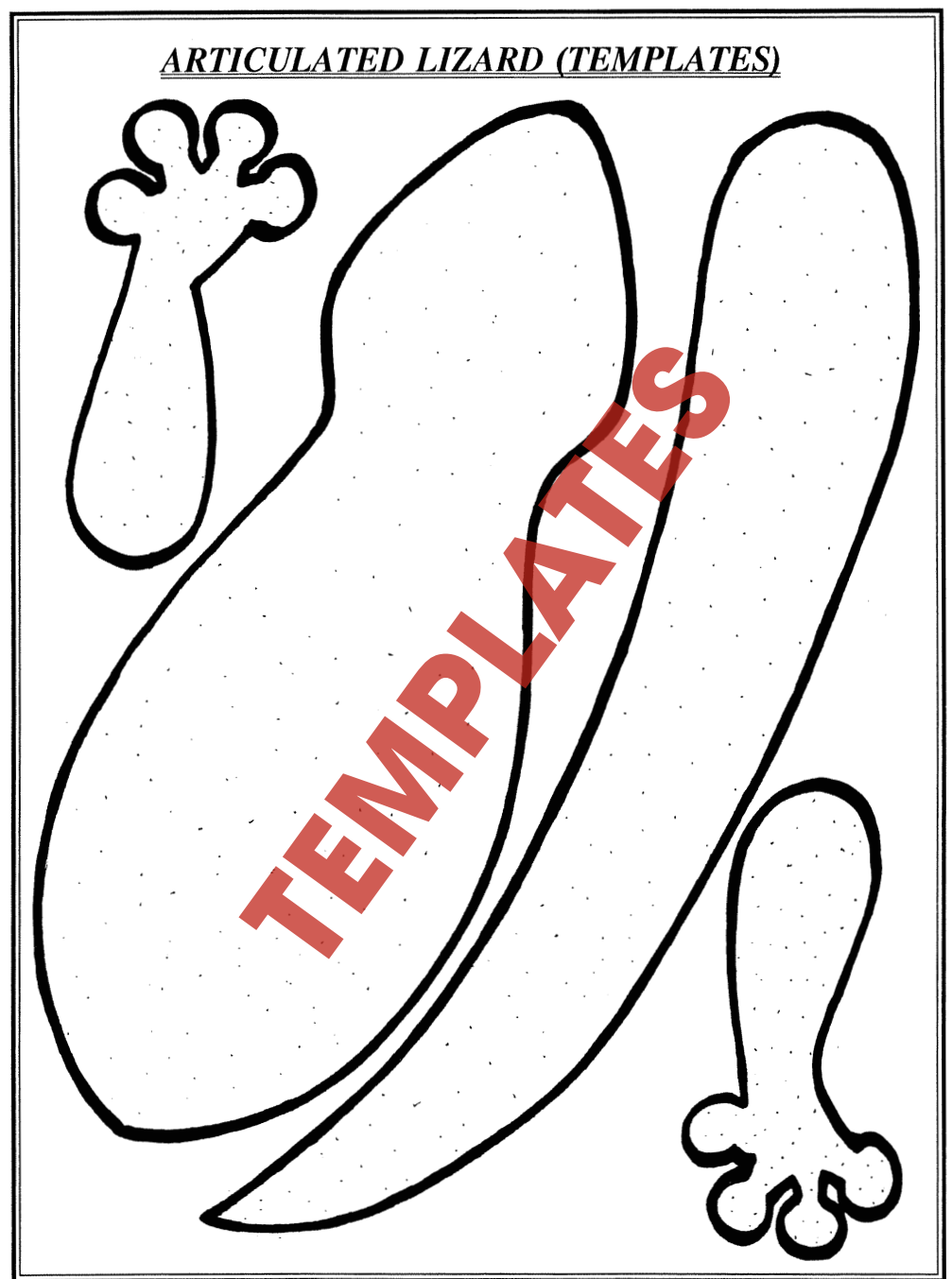
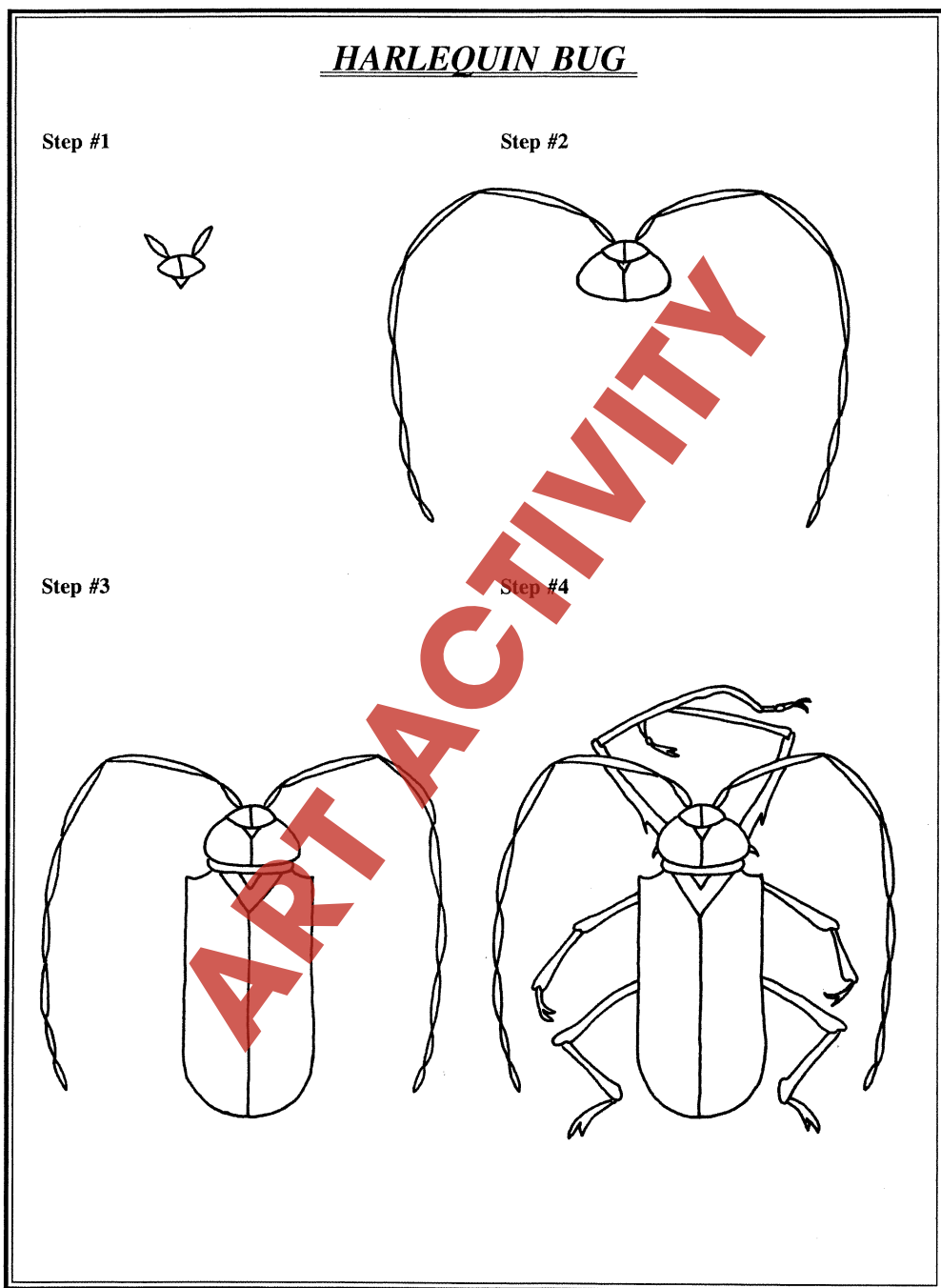


Step #5 Create the body shape by drawing connecting lines between elbows and feet. Trace all these lines with dark black felt pen.

Step #6 Using black crayon or black pencil crayon, softly colour in both arms, feet and body. Colour areas in so that one can still see the black outlines of felt pen.

Step #7 Add a line of green felt pen to the paws to form a stem. Add a few narrow green leaves to create a sprig of bamboo. The students can then add a background, or a second panda bear, or a smaller version to give the impression of a baby panda. A cute image can be created by drawing two pandas facing each other.





1. Roses, Roses, Roses



2. Cherry Blossom Spring



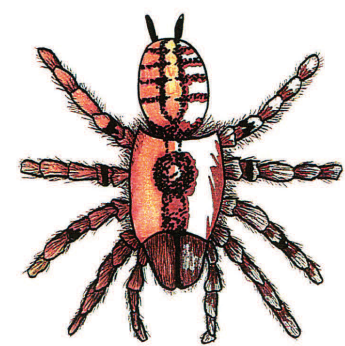
3. Peony



4. Sea Waves And Killer Whales



5. Pandamania



6. Tarantulas