

# Introduction

Eric Wilson novels excite the imagination of young readers in grades 4-6. Appealing to children's inherent keen interest in mystery, Eric Wilson has skillfully woven accurate geographic and historic information into his writing. He also touches on current social and political issues in many of his novels. As such, these novels lend themselves to the integrated study of the mystery genre with geography topics in social studies and investigation units in science.

Disneyland Hostage provides rich material for the study of setting, characterization and plot development. It can be used independently or as an introduction to the other novels in the series. The varying levels of difficulty in the novels provide opportunity to accommodate individual student ability, experience and interests.

Students can supplement the package with meaningful research which will strengthen the impact of their work. They will take great delight in finding information on the Internet that directly links to the places or events in the novels.

Disneyland is a topic of interest to students. This could be extended into a research project on the history of Disneyland or into a creative project on what might be a new theme area for the park. The Third World Poverty issue has raised much concern in Canada and around the world. It could be further explored, looking at all points of view.

Through the Internet, students can be introduced to the author, Eric Wilson. His website address is [www.ericwilson.com](http://www.ericwilson.com).

3. Use this page to draw your favourite Disneyland area.

As you read the story, add information about the characters identified in the character web.

**Character Summary of Liz Austen**

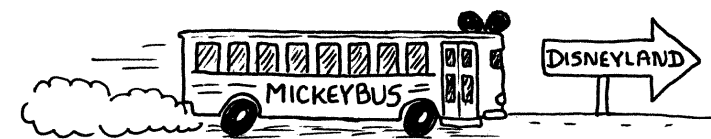
APPEARANCE

ACTIONS, FEELINGS, THOUGHTS AND WORDS

CHARACTER TRAITS

ACTIONS, FEELINGS, THOUGHTS AND WORDS	CHARACTER TRAITS

**Chapter 2**



1. How did Liz upset Aunt Melody at the airport?

\_\_\_\_\_

\_\_\_\_\_

\_\_\_\_\_

\_\_\_\_\_

2. a) Where did Liz spend the first day of her vacation?

\_\_\_\_\_

\_\_\_\_\_

\_\_\_\_\_

b) In what exciting event did she participate?

\_\_\_\_\_

\_\_\_\_\_

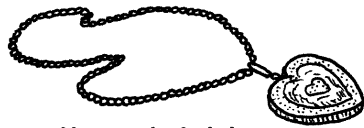
\_\_\_\_\_

c) Who played the role of Frankenstein's bride?

\_\_\_\_\_

\_\_\_\_\_

\_\_\_\_\_

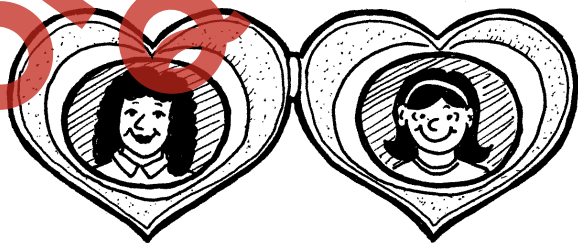


1. a) Explain Senor Hernandez's job.

Handwriting lines for the answer to question 1a.

b) What problems were there in La Lucena?

Handwriting lines for the answer to question 1b.



1. Characterization

Use the items you have recorded on your character summary to write a one paragraph character sketch of Liz Austen. Your paragraph should include the following:

- a) a brief description of the character's appearance
- b) five (5) character traits, supported with information from the story
- c) a topic and concluding sentence.

Use this page for your rough draft.

Handwriting lines for the rough draft of the character sketch.

2. Letter



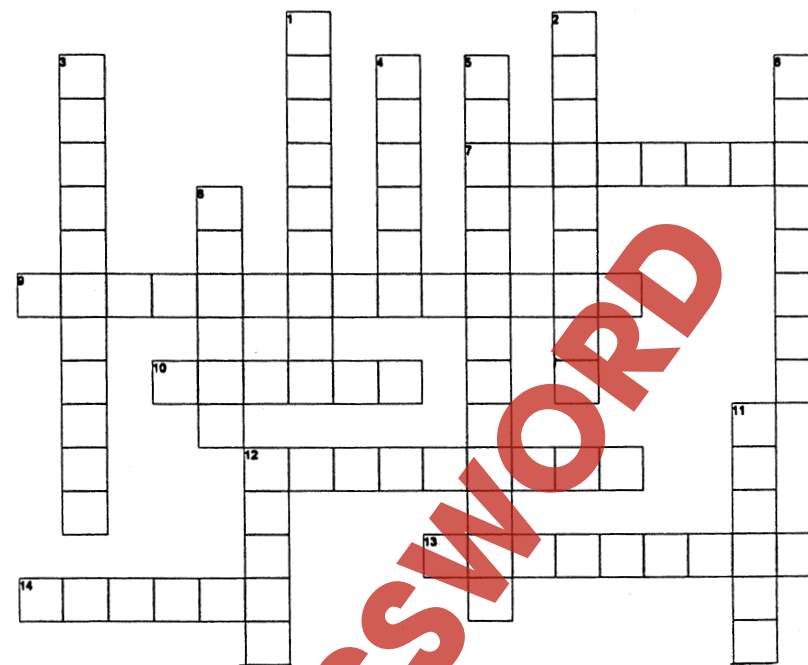
Imagine that you are Liz Austen. Write a letter to your brother, Tom, telling him of your adventures during your vacation with Aunt Melody. Be sure to relate the events in the order in which they occurred. This assignment should use the friendly letter format.

Use this page for your rough draft.

Handwriting lines for the rough draft of the letter.

4. Vocabulary

Complete the following crossword:



Across

- 7. The most effective hostages (p.72)
- 9. Where Liz, Serena, Melody, etc. were held captive (p.66)(2 words)
- 10. The person who called Senor Hernandez a thief (p.108)
- 12. The sternwheeler that goes to Tom Sawyer Island (p.56, 2 words)
- 13. Person who fights for causes and holds hostages (p.73)
- 14. Ill-mannered and awkward (p.7)

Down

- 1. How to say "good luck" to an actor (p.6) (3 words)
- 2. Statement of beliefs and goals (p.103)
- 3. Spanish for "Go with God" (p. 99) (3 words)
- 4. La Lucena's only export product (p.91)
- 5. Liz's gift for Ramon (p.42)(2 words)
- 6. Above ground light rail transit that carries passengers (p.15)
- 8. Lacking courage, may get pushed around by weaker people (p.86)
- 11. Representative of a country who helps visiting fellow countrymen (p.39)
- 12. Ordered to execute Serena (p.112)

5. Vocabulary

Complete the following Disneyland wordsearch:

F O R T W I L D E R N E S S C  
 H A U N T E D M A N S I O N A  
 B M I C K E Y M O U S E M U S  
 E F A N T A S Y L A N D E N T  
 A M A T T E R H O R N S C L L  
 R I W J U N G L E C R U I S E  
 C S A D V E N T U R E L A N D  
 O D L D M I F M E I M J F J R  
 U G N S Q S R G K D W Y S G A  
 N O F F G A X L A A H N K R C  
 T O M O R R O W L A N D T P U  
 R F D U W R I M O N O R A I L  
 Y Y N I X J Q X Q I H M A F A

Adventureland  
 Bear Country  
 Castle Dracula  
 Fantasyland

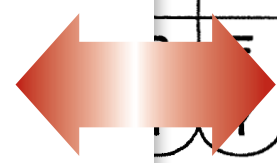
Fort Wilderness  
 Goofy  
 Haunted mansion  
 Jungle Cruise

Matterhorn  
 Mickey Mouse  
 Monorail  
 Tomorrowland

Vocabulary

Complete the following Disneyland wordsearch:

F O R T W I L D E R N E S S C  
 H A U N T E D M A N S I O N A  
 B M I C K E Y M O U S E M U S  
 E F A N T A S Y L A N D E N T  
 A M A T T E R H O R N S C L L  
 R I W J U N G L E C R U I S E  
 C S A D V E N T U R E L A N D  
 O D L D M I F M E I M J F J R  
 U G N S Q S R G K D W Y S G A  
 N O F F G A X L A A H N K R C  
 T O M O R R O W L A N D T P U  
 R F D U W R I M O N O R A I L  
 Y Y N I X J Q X Q I H M A F A



**ANSWER KEY**

Adventureland  
 Bear Country  
 Castle Dracula  
 Fantasyland

Fort Wilderness  
 Goofy  
 Haunted mansion  
 Jungle Cruise

Matterhorn  
 Mickey Mouse  
 Monorail  
 Tomorrowland