

NAME: _____



Activity Six



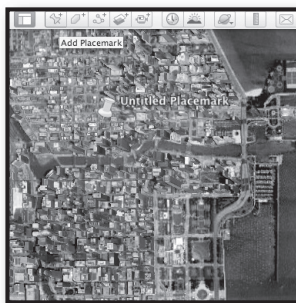
World Tour

Create a world tour using Google Earth™. Start with a starting point for your trip, for example your hometown. Click “Add” and “Placemark” from the top navigation bar, or click the “add placemark” icon in the toolbar at the top of your screen. You may move your placemark to a specific spot or keep it in a general area. You can also change the icon by clicking the image button to the right of the new window that has opened. Give your placemark a name and short description. Press OK to save your placemark in the “My Places” tab.

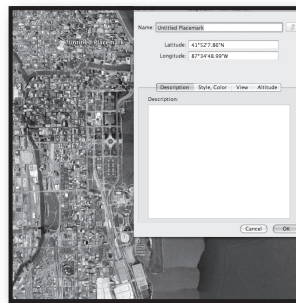
When you have chosen all your destinations for your tour, right click the “My Places” tab and click new folder. Name your folder “My Tour” and drag your placemarks into the folder. To view your virtual tour, click on your tour folder and select “Play Tour” by clicking the folder icon at the bottom of the “Places” tab.

To see some examples of already created tours, click the “Earth Gallery” icon in the “Layers” tab. Below are some screenshots to help you out.

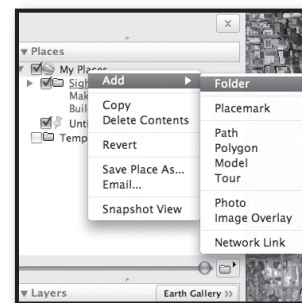
1



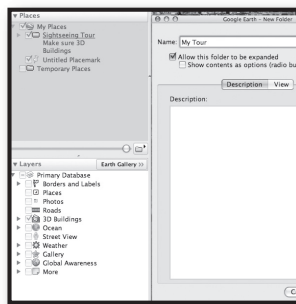
2



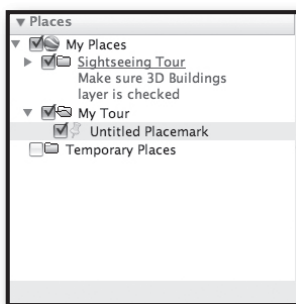
3



4



5



6

