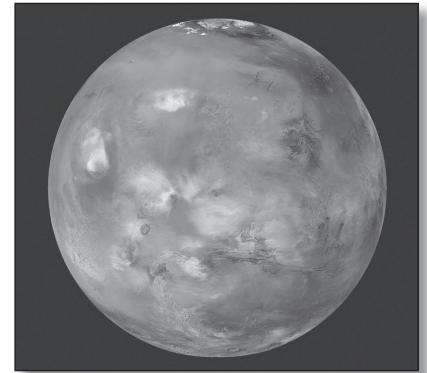




# Task Sheet 8

## Mars Roamer Predicament

- 8) The National Science Center has a problem and needs your help. They recently sent a rover called the Mars Roamer, to Mars to test soil and air samples. As part of the test, the rover was able to record temperatures on the red planet. However, it ran into a slight problem in relaying the information to earth. Your job is to read the data below. Determine the temperatures based on the information in the clues below.



- a) **Midnight temperature. The Mars Roamer recorded a temperature that is two more degrees colder than 100 degrees below the freezing point in Celsius (Fahrenheit).**

What temperature did the rover record? \_\_\_\_\_ °C (°F)

- b) **Four hours later, the temperature dropped thirteen degrees.**

What temperature did the rover record? \_\_\_\_\_ °C (°F)

- c) **Two hours later, the temperature had risen fifteen degrees.**

What temperature did the rover record? \_\_\_\_\_ °C (°F)

- d) **Six hours later, the temperature had climbed twenty degrees.**

What temperature did the rover record? \_\_\_\_\_ °C (°F)

- e) **During the next two hours, the temperature dropped one degree.**

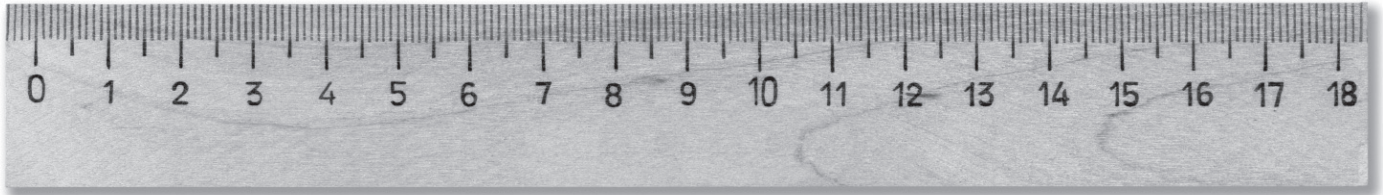
What temperature did the rover record? \_\_\_\_\_ °C (°F)

- f) **In three hours, the temperature was five degrees warmer than it was at midnight.**

What temperature did the rover record? \_\_\_\_\_ °C (°F)

### Explore With Technology

Using an online source, check out data from other Mars rovers. Determine the average high and low temperatures, in Celsius and Fahrenheit, found on the red planet. Then, determine what part of the planet is warmest – the equator, the poles, or somewhere in between.

**4a) Use a ruler to draw the following shapes.**

**Ex: Draw a rectangle with a perimeter of 3 inches (7.5 cm).**



i) Draw a triangle with a perimeter of 2.5 inches (6 cm).

ii) Draw a square with a perimeter of 3 inches (8 cm).

iii) Draw a triangle with a perimeter of 3.5 inches (9 cm).

iv) Draw a rectangle with a perimeter of 2 inches (5 cm).

v) Draw a rectangle with a perimeter of 4.5 inches (12 cm).

vi) Draw a square with a perimeter of 3 inches (8 cm).

vii) Draw a rectangle with a perimeter of 2.5 inches (6 cm).

viii) Draw a square with a perimeter of 2.5 inches (6 cm).

ix) Draw a triangle with a perimeter of 4 inches (10 cm).

x) Draw a square with a perimeter of 2 inches (5 cm).

xi) Draw a rectangle with a perimeter of 5 inches (13 cm).

NAME: \_\_\_\_\_



Timed Drill Sheet # 6



**9a) Draw the hands on each clock below to show the time given.**

Ex:



1:00

i)



3:00

ii)



12:30

iii)



6:30

iv)



5:20

v)



8:50

vi)



11:45

vii)



7:15

viii)



9:35

ix)



2:22

x)



4:45

xi)



10:10

xii)



6:15

xiii)



2:50

xiv)



8:20