



Basics of Map Reading

Using the scale on the map, calculate (to the nearest mile/kilometer) how far the following objects are from each other. You may want to use a ruler or string to be accurate.



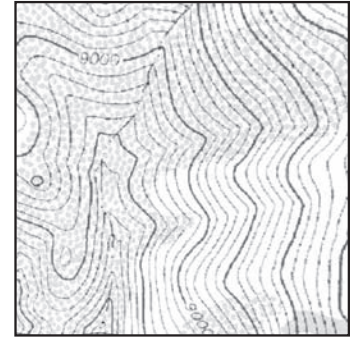
1. From the library to the school. _____
2. From the gas station to the school. _____
3. From the hospital to the park. _____
4. From the park to the school. _____
5. From the park to the library. _____
6. From the post office to the park. _____
7. From the post office to the hospital. _____
8. From the gas station to the library. _____



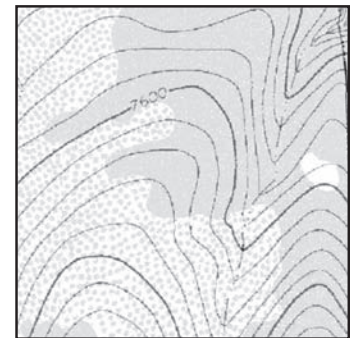
Mapping Geographical Features

All maps have their own way of communicating meaning. **Political maps** show **boundaries** between states or provinces. The states and provinces are usually written in capital letters. Capitals of states, provinces and territories usually have a square to mark their location. Maps use colors, which represent the things on the ground. For example, bodies of water, such as rivers, lakes and oceans, are usually colored blue. Forests and other plant areas are colored green. Buildings and roads are colored black. Brown is used to show deserts, historical buildings and national parks.

Topographic maps show differences in **elevation** or height. They are either black or brown in color. The lines, or **contour lines**, connect points of land that are the same height. When the lines are close together, the land is **steep**. When the topographic lines are far apart, the area has a **gradual incline**. Elevation begins at **sea level**, which is the height of the sea in between high and low tides.



A topographic map showing steep elevation



A topographic map showing gradual elevation

Mapping Hint:

Colors on maps, which are used to represent things on land, usually resemble the things they represent.

Explore with Google Earth™



Type in your hometown into the search field. Click on "View" and "Status Bar" in the top navigation bar. At the bottom of the screen you will see a set of numbers. They show the coordinates of your hometown, then the elevation. What do you notice about the elevation numbers as you move your mouse from the green to brown areas?

NAME: _____



Mapping Cultural Features

1. From these photos, what can you say about a community that is urban?



2. Make a list of 3 things that you can do in both the city and the countryside.

• _____
• _____
• _____

3. List the 3 advantages of living in an urban community and the advantages of living in a rural community.

• _____
• _____
• _____

4. Circle the word **TRUE** if the statement is TRUE or circle the word **FALSE** if it is FALSE.

a) A community is a group of people who share common interests, characteristics and experiences.

TRUE **FALSE**

b) People from the same community do not live in the same area.

TRUE **FALSE**

c) All communities are friendly, safe and clean.

TRUE **FALSE**